



**BOE/CO
Friday Packet
November 3, 2023**

Upcoming Meeting Dates

11-3-2023 English Language Arts Curriculum Memo, Ms. Goss

11-2-2023 Technology Education Curriculum Memo, Dr. Zavodjancik

11-1-2023 Assessment Memo, Dr. Zavodjancik

11-1-2023 WL Memo, Dr. Zavodjancik

October 2023 Fairfield Dining Report

9-29-2023 Town Planning Analysis re Students in Apartments/Complexes

11-1-2023 FPS Enrollment Count



Upcoming Board of Education Meeting Dates **2023**

November 14	7:30 PM	BoE Regular Meeting CO Board Room 501 Kings Hwy East
November 15	2:30 PM	Facilities Committee Meeting Superintendent Conference Room 501 Kings Hwy East
November 20 Monday	7:30 PM	BoE Special Meeting CO Board Room 501 Kings Hwy East
November 28	5:00 PM	Policy Committee Meeting Canceled
November 28	7:15 PM 7:30 PM	BoE Special Meeting/Organizational BoE Regular Meeting CO Board Room 501 Kings Hwy East
December 7 Thursday	7:30 PM	BoE Special Meeting/Town Hall CO Board Room 501 Kings Hwy East
December 12	7:30 PM	BoE Regular Meeting CO Board Room 501 Kings Hwy East



FAIRFIELD PUBLIC SCHOOLS

Janine Goss
Executive Director of PK-12
Literacy
Phone: 203-255-8392
FAX: 203-255-8273

To: Mr. Michael Testani, Superintendent

From: Ms. Janine Goss, Executive Director of PK-12 Literacy

Date: November 3, 2023

Re: PK-12 ELA Proposed Curricula

PK-12 ELA curricula were reviewed and revised over the fall 2022 and winter, spring, summer, and fall of 2023.

Proposed course curricula are posted in PDF format on our website for public review by following this link: <https://www.fairfieldschools.org/academics/subjects/english-language-arts>
Direct links to each of the revised documents are also below.

I will facilitate a brief presentation for revised ELA curricula with Ms. Julie Heller, Program Director ELA 6-12, and Ms. Kristen Bruno, Program Director for Early Childhood Special Education, at the November 14, 2023 regular meeting of the Fairfield Board of Education with an anticipated vote at the November 20, 2023 special meeting.

Details regarding what was added and what was removed in proposed curricula are [here](#) for your review.

This project's success reflects the remarkable teamwork of our PK-12 educators and the individual expertise they provided throughout the past 12 months. I look forward to your feedback.

[Pre-Kindergarten](#)

[Kindergarten](#)

[Grade 1](#)

[Grade 2](#)

[Grade 3](#)

[Grade 4](#)

[Grade 5](#)

[Grade 6](#)

[Grade 7](#)

[Grade 8](#)

[Grade 9CP](#)

[Grade 9H](#)

[Grade 10CP](#)

[Grade 10H](#)

[Grade 11CP](#)

[Grade 11H](#)

[Grade 12CP](#)

[Grade 12H](#)

[AP Language & Composition](#)

[AP Literature & Composition](#)

[Call of the Wild](#)

[Contemporary Global Literature](#)

[Creative Writing](#)

[Dark Chronicles: The Literature of
True Crimes and Mysteries](#)

[The Evolution of Gender Perspectives
Through Literature](#)

[Know Thyself: The Literature of Well-Being](#)

[Poetry Workshop](#)

[Satire](#)

[The Supernatural in Literature](#)

[The Wide World of Sports Literature](#)

[Introduction to Journalism](#)

[Advanced Journalism](#)

[Acting I](#)

[Acting II](#)

[Performance Studio III](#)

[Performance Studio IV](#)



**FAIRFIELD
PUBLIC SCHOOLS**

James Zavodjancik, Ed.D.

Chief Academic Officer

Phone: 203-255-8390

FAX: 203-255-8273

To: Mr. Michael Testani, Superintendent of Schools

From: James Zavodjancik, Chief Academic Officer

Date: November 2, 2023

Re: Proposed Technology Education Curriculum Documents

Over the past year, the technology education department has been reviewing, revising, and updating its curricular documents.

These documents can be found on the FPS website at:

<https://www.fairfieldschools.org/academics/subjects/technology-education>

All *proposed* curriculum documents are in draft form at the bottom of the webpage by level and course for public review.

A presentation will follow at the November 14, 2023 regular Board of Education Meeting which will include information on enrollment, program changes, and the updated curricular documents.



**FAIRFIELD
PUBLIC SCHOOLS**

James Zavodjancik, Ed.D.

Chief Academic Officer

Phone: 203-255-8390

FAX: 203-255-8273

To: Mr. Michael Testani, Superintendent of Schools

From: James Zavodjancik, Chief Academic Officer

Date: November 1, 2023

Re: State and District Assessment Information

Please see the below tables regarding district and state assessment information as requested. The first three pages indicate state and district assessments that are/will be administered to our students during the 2023-2024 school year. The final page is a list of assessments that were formerly administered to our students prior to the 2023-2024 school year and are no longer required. These assessments have been eliminated from our [assessment calendar](#). Additional information not provided in the attached tables regarding FPS assessments can be found on our [Assessment Webpage](#) of the FPS website and from Mr. Testani's [Friday Packet Letter](#) to the Board of Education on October 27, 2023.

Assessment	Grade(s)	Purpose	Time	Mode	Cost
Smarter Balanced <ul style="list-style-type: none"> Language Arts Mathematics 	3-8	<ul style="list-style-type: none"> Cumulative State Mandated Yearly ELA/Math Assessments Describes student achievement and growth of student learning. Additional Information 	< 4 hours total (average) Varies by student; untimed	Computer	\$0
NGSS <ul style="list-style-type: none"> Science 	5, 8, & 11	<ul style="list-style-type: none"> Cumulative State Mandated Science Assessment Additional Information 	90 minutes (estimate) Varies by student; Untimed	Computer	\$0
CTAA <ul style="list-style-type: none"> Alternative Assessment (Reading/Writing/Math) 	3-8, 11	<ul style="list-style-type: none"> State Mandated Alternative Assessment for identified students. Additional Information 	Varies per student	One-to-One	\$0
CTAS <ul style="list-style-type: none"> Alternative Science Assessment 	5, 8, & 11	<ul style="list-style-type: none"> State Mandated Alternative Science Assessment for identified students. Additional Information 	Varies per student	One-to-One	\$0
LAS Links	K-12	English Language Proficiency State Assessment (EL Students) <ul style="list-style-type: none"> Additional Information 	~ 60 minutes	Determined by subtest	\$0
National Assessment of Educational Progress (NAEP)	4 – Math/Reading 8 – Math/Reading	<ul style="list-style-type: none"> Federal Assessment that is randomly sampled/administered to students/schools across the country. Schools are chosen and notified in the summer that they were chosen to participate. NAEP Website Additional Information 	90 minutes (estimate)	Computer	\$0
CT Physical Fitness Assessment (CPFA)	4, 6, 8 (annually) HS (one time during 9-12)	Students are administered assessments to determine standards in four fitness components: <ul style="list-style-type: none"> Aerobic endurance Flexibility Upper body strength and endurance Abdominal muscle strength and endurance Additional Information 	Timed per assessment	Assessed by PE Teacher	\$0
PSAT	9 -11	<ul style="list-style-type: none"> Measures reading, writing, and math abilities while preparing for the SAT and college readiness. Additional Information 	~ 2 hours and 14 minutes	Computer	~\$12.00/student

Assessment	Grade(s)	Purpose	Time	Mode	Cost
SAT	11	<ul style="list-style-type: none"> State Mandated Yearly ELA/Math Assessment Measures literacy, numeracy, and writing skills and college readiness Additional Information 	2 hours and 20 minutes	Computer	\$0
NWEA – MAP Growth <ul style="list-style-type: none"> Math Reading Language Usage 	K-9 Math 4-9 Reading 4-8 Language Usage	Universal Screener <ul style="list-style-type: none"> Measures students’ academic performance in reading, language, and math Adjusts to student performance and measures growth over time. Additional Information on Universal Screeners Additional Information on NWEA 	~ 40-60 minutes per test Untimed; Varies by student	Computer	\$12.33/student for multiple assessments \$8.51/student for a single assessment
Acadience Reading	K-3	Universal Screener <ul style="list-style-type: none"> Identifies students who may be at risk for reading difficulties and identifies targeted skill support. Additional Information on Universal Screeners Additional Information on Acadience Reading 	Between 3-13 minutes per student	Computer One-to-One (First Sound Fluency; Phoneme Segmentation Fluency; Letter Naming Fluency; Nonsense Word Fluency; Oral reading Fluency) Group Administered (MAZE – comprehension)	\$6.95/student
Midterms/Finals	High School Courses	<ul style="list-style-type: none"> Summative Assessment to measure content and skill acquisition in discipline specific courses. 	Per high school schedule	Varied mode	\$0
STAMP <ul style="list-style-type: none"> World Languages 	6-12 and enrolled in W.L.	<ul style="list-style-type: none"> Measures students’ reading, writing, listening, and speaking proficiency skills in a world language. Additional Information 	Varies by level / student (3-hour window available)	Online, Computer Adaptive	\$19.90/student \$29.90 (ASL) Varies (ALTA testing)
DESSA	K-8	SEL Universal Screener <ul style="list-style-type: none"> Identifies which students need additional support via a student survey completed by the teacher. Additional Information 	Teacher completed / ~ 1 minute per student	Computer; Teacher administered per child	\$0

Assessment	Grade(s)	Purpose	Time	Mode	Cost
NNAT3	3	Gifted Testing <ul style="list-style-type: none"> General ability testing/ nonverbal measure Additional Information 	30 minutes (approximate)	Computer	\$12.00/student
CoGat	3	Gifted Testing <ul style="list-style-type: none"> Assesses students verbal, quantitative, and non-verbal reasoning. Additional Information 	90 minutes (approximate)	Computer	\$15.95/student
CORE Phonics Survey	All K-3 4-5 (as needed)	Universal Screener and Diagnostic Assessment <ul style="list-style-type: none"> Assesses phonics skills that have a high rate of application to beginning reading. Identifies mastered phonics skills. Identifies and instructional focus to guide instruction with other forms of data. Communicates phonics learning goals to students, families, and teachers. 	~ 10-15 minutes	Individually administered (non computer)	\$0
Heggerty Kindergarten Primary Phonemic Awareness	K-1	Universal Screener <ul style="list-style-type: none"> Gathers information on a student's phonemic awareness. Identifies phonemic awareness skills that are strengths and instructional need. Identifies an instructional focus with other forms of data. 	~ 5-10 minutes	Individually administered (non-computer)	\$0
Interim Assessment Blocks	3-8	CT State Assessment (Optional) <ul style="list-style-type: none"> Assesses students on domain specific content and skills at grade level. Typically has 10-18 items. Additional Information 	Varies by student	Computer Classroom/Group Administration Paper/Pencil	\$0
District Math Fluency Assessments	1-5	<ul style="list-style-type: none"> Assesses student mastery of mathematical concepts. Increase student fluency with strategies to deepen mathematical understandings. 	1-2 minutes per assessment	Paper/Pencil	\$0

District Assessment Reductions 2023-2024

The subsequent table indicates assessments which were eliminated or reduced from 2022-2023 to 2023-2024. The universal screener window was also shorted from one month to two weeks of administration for both NWEA-MAP and Acadience.

Assessment	Grade(s)	Purpose	Time	Mode	Cost
STAR <ul style="list-style-type: none"> • Early Literacy • Reading • Math 	K-8	Universal Screener <ul style="list-style-type: none"> • Measures students' academic performance in reading, early literacy, and math. • Adjusts to student performance and measures growth over time. • Additional Information <i>Replaced by NWEA-MAP</i>	4 minutes per question (Math) 3 minutes per question (reading) 150 second limit (Early Literacy)	Computer	~\$12.77/student
Running Records	K-5	Reading Assessment former administered: <ul style="list-style-type: none"> • 1x/month for students at/above grade level. • 2x/month for students approaching grade level. • 1x/week for students below grade level. 	~ 3 minutes per student	One-to-One administration	\$0
F&P	K-5	Reading assessment formerly administered: <ul style="list-style-type: none"> • 3x/year. 	~ 20-30 minutes	One-to-One administration	\$0
Teachers College Units of Phonics	K-2	Phonics End of Unit Assessments administered after each unit.	Varies by lesson	Group administration	\$0
Math Baseline Assessment	K-5	A district math assessment was formerly administered at the beginning of the year.	~ 20-30 minutes	Group administration K-1 individual interviews	\$0
Spelling Assessment	1-5	District spelling assessment formerly administered: <ul style="list-style-type: none"> • 3x/ per year. 	~ 20 minutes	Group	\$0
Writing on-demand	K-5	District writing assessments formerly administered: <ul style="list-style-type: none"> • 3x/year. 	~ 45 minutes	Group	\$0
CORE Graded High Frequency Word Survey and/or CORE Vocabulary	3-5 (as needed)	Recognition of high frequency words and reading vocabulary.	~ 5-10 minutes	One-to-One administration	\$0
CORE Phoneme Deletion and Segmentation	3-5 (as needed)	Identifies any deficits in phonemic awareness	~ 5 minutes	One-to-One Administration	\$0



James Zavodjancik, Ed.D.

Chief Academic Officer

Phone: 203-255-8390

FAX: 203-255-8273

To: Mr. Michael Testani, Superintendent of Schools

From: James Zavodjancik, Chief Academic Officer

Date: November 1, 2023

Re: Responses from BoE Regular Meeting on 10/24 re: World Language Course Enrollment

During the regular Fairfield Board of Education meeting on October 24, 2023, a new American Sign Language III (ASL) course was proposed. During the presentation, members of the BoE requested additional information on world language enrollment in regard to the growing ASL population and if other languages were observing a decline. World Languages course enrollments are below for review.

Table 1: District World Languages Enrollment by Language (3 years)

Language	2021-2022	2022-2023	2023-2024
ASL	Not Offered	169	254
French	306	340	310
Italian	284	276	277
Latin	137	110	82
Mandarin	109	153	188
Spanish	1329	1410	1295
Total Language Courses Taken	2165	2458	2406

Table 2: District Changes in Language Enrollment by Language

Language	From SY 2022 to SY 2023	From SY 2023 to SY 2024	From SY 2022 to SY 2024
ASL	169	85	254
French	34	-30 (-1 FLHS; -29 FWHS)	4
Italian	-8	1	-7
Latin	-27	-28 (+4 FLHS; -32 FWHS)	-55
Mandarin	+44	+35	79
Spanish	+81	-115 (-74 FLHS; -41 FWHS)	-34
Total Language Courses Taken	+293	-52	241

Below please find the district detailed (by course) enrollment over three years.

Table 3: District World Languages by Course Enrollment (3 years)

Language	2021-2022	2022-2023	2023-2024
ASL I	0	169	159
ASL II	0	0	95
AP French	32	32	48
French I	8	14	8
French II	16	14	10
French III H	87	127	77
French IV	5	0	0
French IV H	88	74	95
French V	1	0	0
French V H	66	75	63
French VI	3	4	9
Italian I	85	91	76
Italian II	102	73	77
Italian III H	60	85	64
Italian IV H	37	27	60
AP Latin	4	11	9
Latin I	54	30	23
Latin II	37	33	19
Latin III H	38	28	27
Latin IV H	4	8	4
Mandarin I	38	40	43
Mandarin II	25	54	35
Mandarin III H	24	33	71
Mandarin IV H	22	26	39
AP Spanish	39	59	74
Spanish I	66	85	63
Spanish II	75	77	95
Spanish III H	341	377	353
Spanish IV	135	88	92
Spanish IV H	243	340	256
Spanish V	106	130	123
Spanish V H	216	165	163
Spanish VI	108	89	76
Intro to Culture and Communication	58	66	59

Table 4: District Changes in World Language by Course/Language

Language	From SY 2022 to SY 2023	From SY 2023 to SY 2024	From SY 2022 to SY 2024
ASL I	169	-10	159
ASL II	-	95	95
AP French	0	16	16
French I	6	-6	0
French II	-2	-4	-6
French III H	40	-50	-10
French IV	-5	0	-5
French IV H	-14	21	7
French V	-1	0	-1
French V H	9	-12	-3
French VI	1	5	6
Italian I	6	-15	-9
Italian II	-29	4	-25
Italian III H	25	-21	4
Italian IV H	-10	33	23
AP Latin	7	-2	5
Latin I	-24	-7	-31
Latin II	-4	-14	-18
Latin III H	-10	-1	-11
Latin IV H	4	-4	0
Mandarin I	2	3	5
Mandarin II	29	-19	10
Mandarin III H	9	38	47
Mandarin IV H	4	13	17
AP Spanish	20	15	35
Spanish I	19	-22	-3
Spanish II	2	18	20
Spanish III H	36	-24	12
Spanish IV	-47	4	-43
Spanish IV H	97	-84	13
Spanish V	24	-7	17
Spanish V H	-51	-2	-53
Spanish VI	-19	-13	-32
Intro to Culture and Communication	8	-7	1

Table 5: District Teacher FTE Counts by Language and Level

Language	2021-2022			2022-2023			2023-2024		
FTE →	ES	MS	HS	ES	MS	HS	ES	MS	HS
ASL						1.6			2.6
French		5.4	3.6		5	3.6		5.2	3.4
Italian			3.2			3.2			3
Latin			2			1.8			1.4
Mandarin			1.4			1.4			1.4
Spanish	4.3	15.4	13.4	4.3	15.6	12.8	4.3	15.4	13.2
Intro. to culture			.6			.8			.6

MONTHLY DINING review

Fairfield Public Schools

October 2023



DINING SERVICES MONTHLY REPORT

PREPARED BY:

Dawn Carr, General Manager and John Prunier, District Manager

Below is a summary of our accomplishments over the past month, as well as open action items. As always, please feel free to write or call us with any questions or concerns.

KPI DATA

Below is the KPI data for participation.

SCHOOL	ENROLLMENT	BREAKFAST ADP	BREAKFAST ENROLLMENT PERCENTAGE	LUNCH ADP	LUNCH ENROLLMENT PERCENTAGE	A LA CARTE DAILY AVERAGE
FAIRFIELD LUDLOWE HS	1486	51	3%	425	29%	1263
ECC - WARDE	135	NA	NA	3	2%	NA
FAIRFIELD WARDE HS	1372	68	5%	425	31%	851
FAIRFIELD WOODS MS	742	48	6%	324	44%	699
ROGER LUDLOWE MS	781	42	5%	273	35%	1097
TOMLINSON MS	592	54	9%	290	49%	622
WALTER FITZGERALD CAMPUS	67	5	7%	15	22%	9
BURR ES	354	113	32%	163	46%	91
DWIGHT ES	230	41	18%	104	45%	102
HOLLAND HILL ES	390	126	32%	180	46%	40
JENNINGS ES	279	75	27%	129	46%	41
MCKINLEY ES	472	88	19%	282	60%	42
MILL HILL ES	397	59	15%	180	45%	52
NORTH STRATFIELD ES	412	101	25%	189	46%	127
OSBORN HILL ES	437	66	15%	180	41%	83
RIVERFIELD ES	393	85	22%	188	48%	115
SHERMAN ES	368	34	9%	176	48%	139
STRATFIELD ES	386	28	7%	142	37%	90

MEAL REPORT/MENU UPDATE

This month, our top menu item was **Chicken & Waffles**, with over **1600** served. We have a new menu item **McGriddle Sausage Sandwich** and **Baja Bean Fajita Veggabowl** which was added to next month's menu.

We served over **780** plant-based meals this month.

Breakfast Menu new items: **Spring Breeze Smoothie**, **Fruity Parfait**, **Bagel with Butter**, and **Hard-Boiled Egg Breakfast Pack**.

SIMPLY ROOTED/ NUTRITION AWARENESS

Our ongoing goal is to ensure the most nutritious program for your students through our menus and education/awareness programs. Some of the highlights of last month's efforts included:

- Wellness Committee Meeting – 10/23/23
- Local Cauliflower Day – Harvest of the Month – 10/18/23
- Celebrating National Farm to School Week – Local Apple Bake – 10/2-10/6
 - Meatless Mondays



MARKETING PROMOTIONS

Whitsons likes to keep our menus exciting with quarterly and monthly promotions. The promotions that were featured last month included:

CT Grown for Kids Week Celebration – October 2 – October 6.

Our Chefs Chris & Tim prepared a French Toast Apple Bake using CT Grown apples. Students tried the bake and learned all about our Farm to School Mission.

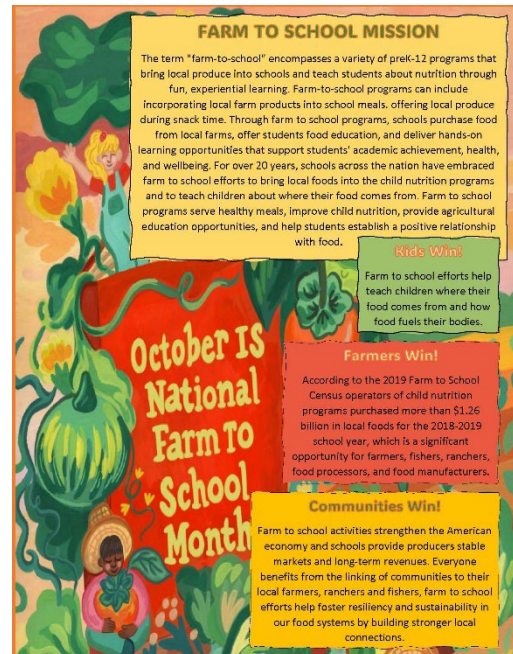


CT Grown for CT Kids Week is an annual event happening every October in Connecticut. This week aims to celebrate and support local agriculture, public education, and our community commitment to the importance of healthy nutritious meals in schools.

Whitsons in Fairfield Public Schools will celebrate "CT Grown for CT Kids Week" with a special Taste Test Day. Our Chefs will prepare French Toast Apple Bake using local apples our schools offer every day. Students will have a chance to try this delicious recipe and learn all about Farm to School mission.



Wednesday 10/4 – Warde High School
Thursday 10/5 – Sherman Elementary School





HAPPY NATIONAL SCHOOL LUNCH WEEK!

THANK YOU TO ALL OF OUR SCHOOL LUNCH HEROS
FOR YOUR PASSION, COMMITMENT, AND STAMINA IN
ENSURING THAT FAIRFIELD'S CHILDREN ARE WELL
NOURISHED AND READY TO LEARN EACH AND EVERY
DAY!



Let's celebrate National School Lunch Week with
your favorite lunch:

FRENCH TOAST BRUNCH FOR LUNCH

Slices of soft French Toast baked to perfection, served with
Syrup and fresh Fruit



WWW.WHITSONS.COM



National School Lunch Week

October 9-13, 2023

START

National School Lunch Week is an annual observance created by President John F. Kennedy in 1962. This week-long celebration highlights positive impact on learning and overall well-being! Delicious school lunches are a convenient and nutritious choice for students and families.

ATTENTION PARENTS!

Did you know that school meals meet federal nutrition standards, including limits on sodium and unhealthy fats? These meals are like a secret cheat code for boosting student achievement and keeping your little adventurers in tip-top wellness!

SCHOOL LUNCH STATS

Nearly 30 million students enjoy healthy school lunches every day!

Nearly 100,000 schools/institutions serve 5 billion school lunches per year.

The National School Lunch Program reduces hunger and supports the realm of American agriculture.

NEXT

Scan to learn the history of the National School Lunch Program, buy #NSLW23 merch and more!



MENU

Let's make a healthy school lunch!

3/4 cup of vegetables with every lunch

1/2 cup serving of fruit daily

1 cup of 1% or fat-free milk

Entrées include whole grains & lean protein

YOU WIN!

NSLW resources are made possible by:



#NSLW23 | #LEVELUPWITHSCHOOLLUNCH



HARVEST

of the
MONTH

Wednesday, October 18th

Local Cauliflower Celebration !

Featuring:

Cauliflower Popcorn

Small pieces of Cauliflower tossed in Olive Oil and Spices and baked off to perfection.

From our local farm !



Cauliflower is a cruciferous vegetable that is naturally high in fiber and B-vitamins. It provides a high level of antioxidants and phytonutrients that can protect against cancer. It also contains fiber to enhance weight loss and digestion, choline that is essential for learning and memory and many other important nutrients. Cauliflower is delicious raw and cooked.



Fairfield Public Schools

Oct 2 · 🌐

October is Farm to School Month!
Through a partnership with our Food Service Provider Whitsons, students are enjoying fresh Connecticut grown pears.



👍❤️ 50

👍 Like 💬 Comment 📄 Send ➦ Share



Sabrosos Tacos is coming to Fairfield Public Schools!

COMING THIS OCTOBER

to our FPS Secondary Schools



Soft or hard taco shells. Chicken, Fish or Black Beans base.
Mango salsa, pickled cabbage, pico de gallo, jalapenos, pickled red onions and more!

OCTOBER 11
LUDLOWE
HIGH SCHOOL
WARDE
HIGH SCHOOL

OCTOBER 12
LUDLOWE
MIDDLE SCHOOL

OCTOBER 13
WALTER
FIZGERALD
CAMPUS

OCTOBER 16
TOMLINSON
MIDDLE SCHOOL

OCTOBER 17
FAIRFIELD WOODS
MIDDLE SCHOOL

WHITSONS CULINARY GROUP | FAMILY OF COMPANIES
WWW.WHITSONS.COM







Whitsons is offering an exciting free breakfast promotion for our elementary schools this October

WAFFLE MANIA!!

FEATURING FLUFFY BELGIAN WAFFLES

Toppings include
Strawberries and Whipped Cream or Caramelized Apples

BURR
OCTOBER 18

DWIGHT
OCTOBER 19

HOLLAND HILL
OCTOBER 20

JENNINGS
OCTOBER 23

MCKINLEY
OCTOBER 24



MILL HILL
OCTOBER 25

NORTH STRATFIELD
OCTOBER 26

OSBORN
OCTOBER 27

RIVERFIELD
OCTOBER 30

STRATFIELD
OCTOBER 31

SHERMAN
OCTOBER 31

WHITSONS CULINARY GROUP | FAMILY OF COMPANIES
WWW.WHITSONS.COM



BURR – 138 SERVED, DWIGHT – 163 SERVED,
HOLLAND HILL – 150 SERVED, JENNINGS – 85 SERVED,
MCKINLEY – 91 SERVED, MILL HILL – 77 SERVED, NORTH
STRATFIELD – 137 SERVED,
OSBORN HILL – 207 SERVED,
RIVERFIELD – 91 SERVED, STRATFIELD -75,
SHERMAN – 51 SERVED





THE ROGER LUDOWE MIDDLE SCHOOL TEAM SHOWED GREAT TEAM SPIRIT THIS HALLOWEEN. THEIR LINE DECORATION AND COSTUMES REALLY BROUGHT GREAT HALLOWEEN SPIRIT TO ALL STAFF AND STUDENTS!!







The North Stratfield art teacher made these Halloween aprons for our kitchen staff, Lory and Brittany. Lory said the kids loved them!



SPECIAL EVENTS

At times, our services extend to include managing special catering events for your faculty, students, administration, staff, and community members. We were proud to serve the following events last month:

- 10/9/23 – Interviewers Committee Luncheon
- 10/18 & 10/19 – Special Education Luncheons
- 10/23 – SPED – Breakfast & Lunch
- 10/24 – Civil Rights Training Breakfast – ECC
- 10/25 – Interviewers Committee Luncheon

COMMUNITY PARTNERSHIPS

As your food service provider, we believe that a true partnership extends beyond serving just breakfast and lunch. We were proud to have partnered with or assisted the district with the following programs:

ENHANCING LIFE...

Coats For Our Communities



Help #ShareWarmth with our Fairfield Public Schools community and donate new or gently used coats.

All donations will go to the non-profit agency, Liberation Programs. Liberation Programs' mission is to provide prevention, treatment, and recovery services to help individuals and their families impacted by substance use and mental health conditions to foster hope and maintain wellness.

Drop off coats at Warde High School cafeteria, Ludlowe High School cafeteria and Fairfield Public Schools Central Office during 8:00 – 1:00, from November 6th to November 10th.

#WhitsonsCares

At Whitsons, our mission is Enhancing Life One Meal At A Time™, but we don't stop there. #WhitsonsCares about our local communities!



WWW.WHITSONS.COM



PLEASE TAKE OUR SURVEY!

October 23rd-27th

Your participation helps us
improve our dining services, and your
feedback is greatly appreciated!



WHITSONS CULINARY GROUP | FAMILY OF COMPANIES
WWW.WHITSONS.COM

TRAINING AND EDUCATION

We are committed to ensuring total quality management and adherence to company standards at every location we serve. We implemented the following training programs last month to reinforce this commitment:

- **Monthly Safety Training – All Staff – Chemical Handling**
- **Monthly PIC meeting – Central Office Boardroom – 10/26/23**

HR UPDATE/PERSONNEL CHANGES

As per our agreement, we would like to notify you of the following changes in personnel:

- **3 employees out on FMLA**
- **2 open FSW positions at Warde HS**
- **1 open Cook position at Warde HS**

OPEN ACTION ITEMS

The following items are ongoing projects. We have provided the status of each project, and indicated where any additional district assistance is needed, where applicable:

- **Ludlowe HS – new oven installation – December Break**
- **Walter Fitzgerald Campus Kitchen renovation – ongoing**

IN THE NEWS

Whitsons is on the cutting edge with our fresh ideas and innovative way of thinking. Here are some articles that show the latest trends in the industry, new regulations, and policy changes:

- **View our YouTube Channel <https://www.youtube.com/@WhitsonsCulinary>**

EVERYDAY HEROS

Gail Plotkin was hired by the Fairfield Board of Education in 2001. She started out as a Food Service Worker and has worked her way through the ranks to Manager of Stratfield Elementary School. The students enjoy her friendly persona and her delicious food!



COMING NEXT MONTH

Look for these exciting new changes next month!

- **District wide Thanksgiving Meal Wednesday November 15th.**

CONNECT WITH US

As your food service provider, we want to understand your needs and continuously improve upon our service. We appreciate your feedback on how we can take our service at your location to the next level.

- **Contact your General Manager, Dawn Carr, at carrd@whitsons.com with questions or comments related to the service at your location.**
- **For general comments that will help us improve our overall service, please feel free to share your comments with us through the following link: <https://www.surveymonkey.com/r/T69CJK8>**

WE THANK YOU for your continued support and partnership. It is our pleasure to serve your district and community.

Complex Name	# of Units	Number of Children	kids per unit	Location of complex
Alto (i)	160	9	0.06	1401 kings Highway
Anchorage (i)	90	7	0.08	333 Unquowa Rd
Audubon Village	16	2	0.13	375-405 Unquowa Rd
Belvoir	44	4	0.09	100-128, 103-125 katona
1645 Black Rock Tpk (a)	29	3	0.10	
50-52 Campfield Ave (a)	12	4	0.33	
Colonial Gardens	56	19	0.34	245 Sunnyridge
Crestwood of Fairfield	18	2	0.11	3845 Park ave
Dogwood Green	90	5	0.06	1131-1223 Stratfield, 149-191 ffield wood, 1402-1472 Melville, 60-102 Montauk
Evergreen Park	41	14	0.34	302-384 Knapps hwy
130 Fairchild Ave (a)	54	1	0.02	
Fairfield OBH	10	6	0.60	187-201 Nordstrand, 80-132 Greenfield
Fairfield Ledgewood	16	1	0.06	31-67 Dawn st
Fairfield Manor	34	9	0.26	1000 Knapps hwy
Fairfield Station Lofts (a)	26	4	0.15	78 Unquowa Place
Gould Manor	40	20	0.50	11-130 Rodgers rd, 327-534 Holland Hill
Greenfield Hunt	100	11	0.11	*
Maplewood	20	8	0.40	1463 Black Rock tpk
Meadows	46	0	0.00	Field Point rd, Salt Meadows
Melody Lane	33	8	0.24	200-296 Melody ln
Mosswood	136	7	0.05	245 Unquowa Rd
Park North	65	25	0.38	3901-4029 Park Ave
Pequot Landing	27	3	0.11	Aberdeen Way, Southport Place
Pine Ridge	25	2	0.08	930-994 South Pine Creek
Pine Tree Lane (a)	50	7	0.14	1-17 Pine Tree Lane
Post Rd Lofts (a)	13	0	0.00	1675 Post Rd
Quincy Condo	40	3	0.08	2-110 Hulls Hwy
Ridgewood Condo	36	12	0.33	121-197 Knapps Hwy
Sillman	12	6	0.50	80-100 Silliman
Somerset	26	3	0.12	Croby St, Federal St.
Southgate	16	1	0.06	450 Center St
Southport Woods East	25	5	0.20	10-58 Mill Hill Rd
Southport Woods West	152	11	0.07	2-224 Southport Woods rd
Stoneridge	70	1	0.01	Stone Ridge way
Stratfield Falls	28	1	0.04	Hillary Cir., Carrie cir.
Strathmoor	69	13	0.19	160 Fairfield Woods rd
Sunnyridge	68	25	0.37	240 Sunnyridge
College Place	10	0	0.00	93-159 College Place
The Oaks	32	0	0.00	104-212 Stillson
Trademark I (i)	101	7	0.07	665 Commerce Drive
Westway (i)	16	0	0.00	461-493 Westway Rd
Woodfield Village	<u>134</u>	<u>4</u>	<u>0.03</u>	**
Total:	2086	273	0.13	

2023 Enrollment

(a) = 8-30g affordable development
 (i) = inclusionary 10% development

* Includes: Chandlers Lane north and south, Bennington Dr, Barrister Lane,
 Deane Lane, Eaton Ct, Hammilton CT, Palmers Bridge, Revere Lane,
 Commonwealth Drive, Getty Cir, Madison Hill, Franklin Lane

** includes: Robertson Crossing, Paisley Lane, Glengarry Rd, Gate Ridge Rd,
 Balmaha Close, Balmaha Court, Blackmount Lane, Blackmount Ct

11/1/2023

FAIRFIELD PUBLIC SCHOOLS ENROLLMENT - ELEMENTARY

	PRE-K	KIND	1	2	3	4	5	TOTAL
Burr		19	19	18	17	22	20	
		19	19	17	18	22	20	
		19	18	17	18	19	18	
				18				
		57	56	70	53	63	58	357
Dwight		17	17	18	20	24	19	
		17	17	19	21	23	19	
		34	34	37	41	47	38	231
Holland Hill		18	18	23	20	20	21	
		18	18	23	19	20	21	
		19	18	23	20	20	21	
			18					
		55	72	69	59	60	63	378
Jennings		17	20	17	22	16	21	
		17	20	15	23	17	22	
		18		17		18		
		52	40	49	45	51	43	280
McKinley		19	20	17	21	23	17	
		20	19	18	20	23	18	
		20	19	19	22	24	19	
		20	19	18	22		20	
		79	77	72	85	70	91	474
Mill Hill		20	20	19	23	20	19	
		20	20	20	23	19	21	
		18	21	20	22	19	20	
				20			18	
		58	61	79	68	58	78	402
No. Stratfield		19	22	21	24	25	20	
		19	22	20	23	25	21	
		19	22	20	24	25	21	
				22				
		57	66	83	71	75	62	414
Osborn Hill		18	19	23	23	24	22	
		18	20	23	23	24	21	
		18	19	23	23	24	21	
		17	19	23				
		71	77	92	69	72	64	445
Riverfield		21	23	20	19	20	23	
		22	22	21	19	20	23	
		21	23	20	18	20	23	
				20				
		64	68	81	56	60	69	398

FAIRFIELD PUBLIC SCHOOLS ENROLLMENT - ELEMENTARY

	PRE-K	KIND	1	2	3	4	5	TOTAL
Sherman		17	20	21	21	23	21	
		17	21	20	24	22	21	
		17	20	20	23	22	21	
		51	61	61	68	67	63	371
Stratfield <i>PK's are am/pm Combined¹</i>	15	16	18	18	19	22	19	
	16	16	19	18	20	22	19	
	12	16	19	18	19	22	19	
	6							
	49	48	56	54	58	66	57	388
ECC/Warde	137							137
TOTAL PRE-K-5	186	626	668	747	673	689	686	4,275

FAIRFIELD PUBLIC SCHOOLS ENROLLMENT - SECONDARY

	6	7	8	9	10	11	12	TOTAL
Fairfield Woods	251	234	257					742
Roger Ludlowe	256	248	257					761
Tomlinson	170	213	209					592
TOTAL 6-8	677	695	723					2,095
FWHS				320	357	323	373	1,373
FLHS				347	374	349	416	1,486
Walter Fitzgerald Campus		(22 CPP, Grade 12)		2	8	17	40	67
TOTAL 9-12				669	739	689	829	2,926

SUMMARY	Pre-K - 5	6 - 8	9 - 12	TOTAL
Current:	4,275	2,095	2,926	9,296

Difference: Current - September 29, 2023	8	5	2	15
September 29, 2023 (for Oct 1)	4,267	2,090	2,924	9,281

¹ PK has AM and PM slots. Full-Day PK Students are counted once.
Please inform the Supt. Office of any discrepancies at 255-8371.