



**BOE/CO
Friday Packet
August 25, 2023**

Upcoming Meeting Dates

8-29-2023 SLAM Presentation Scenario 4B

8-29-2023 4B Projections Summary by School by Grade

8-23-2023 Enrollment Report to Accompany Class Array

8-24-2023 Maintenance Projects Spread Sheet to Accompany Summer Projects



Upcoming Board of Education Meeting Dates **2023**

August 29	5:00 PM	Policy Committee Meeting Superintendent Conference Room 501 Kings Hwy East
	7:00 PM	Special Meeting/Executive Session Superintendent Conference Room
	7:30 PM	Regular Meeting CO Board Room 501 Kings Hwy East
September 5	5:00 PM	Policy Committee Meeting Superintendent Conference Room 501 Kings Hwy East
	7:30 PM	Special Meeting: Community Conversation Fairfield Ludlowe High School Auditorium 785 Unquowa Road
September 6	5:00 PM	Finance Committee Meeting Superintendent Conference Room 501 Kings Hwy East
September 12	7:30 PM	Regular Meeting CO Board Room 501 Kings Hwy East
September 18	5:00 PM	Policy Committee Meeting Superintendent Conference Room 501 Kings Hwy East



Fairfield Public Schools

Enclosure No. 1
August 29, 2023

Scenario 4B

August 29, 2023



Scenario 4B

- ECC program located at Jennings and Holland Hill
 - At the direction of FPS Administrators, it was determined that Jennings and Holland Hill would each have four ECC classrooms plus one full size ECC support classroom for OT/PT (5 classrooms total). These are deducted from the capacity.
 - Shift students out of Jennings and Holland Hill so that those buildings have enough space for the ECC.
- CLC is moved from Jennings to Dwight.
- ELA program shifts from McKinley to Burr.
- Make all schools compliant with state racial balance law (<25% of districtwide average)
- Minimize disruption elsewhere.



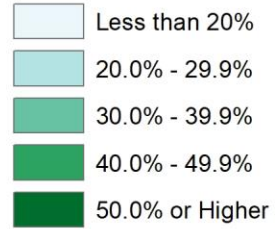
Findings/Constraints

- Traditional redistricting cannot achieve sustainable racial balance within 20% of districtwide average at all schools unless McKinley students are shifted to at least two other schools or satellite zones are used.
- Cannot comply with racial balance law (<25% of districtwide average) by only shifting students out of McKinley.
 - Additional students also need to be shifted into McKinley from neighboring attendance zones.
- The areas of McKinley that border Stratfield have the lowest share of minority students in McKinley. This means that a larger number of students must be impacted in order to meet racial balance objectives using a traditional redistricting approach (assuming some students are shifted to Stratfield).

Fairfield "Planning Blocks" K-5 Enrollment, by Percent Minority Students: 2022-23

 School Points

Percent Minority

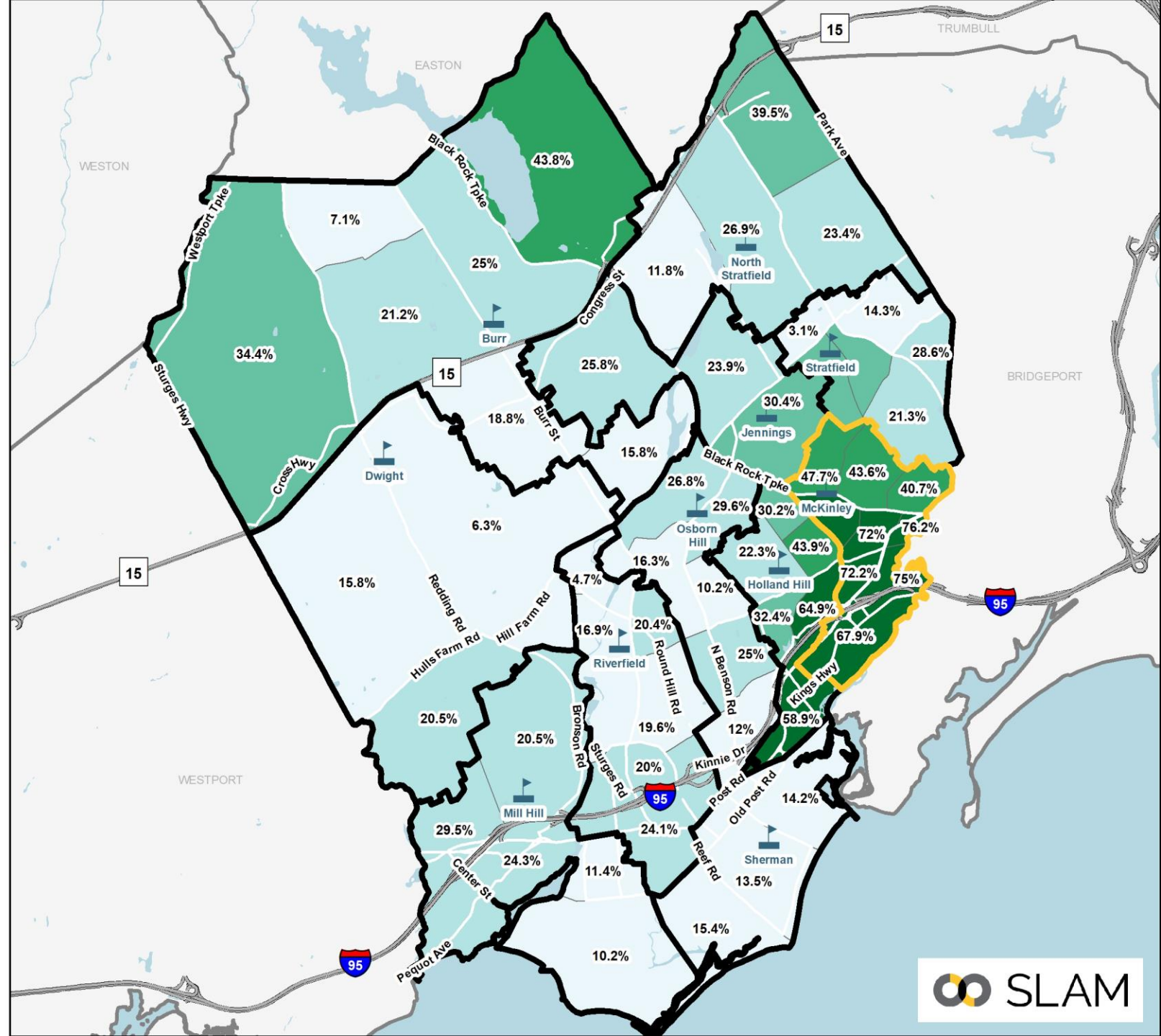


Calculated based on PSIS Information provided by Fairfield Public Schools

**K-5 Districtwide Average
Percent Minority 2022-23: 26.7%**

**No school can exceed
51.7% minority students**

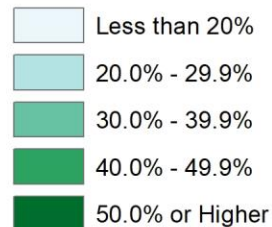
0 0.5 1 2 Miles



Fairfield "Planning Blocks" K-5 Enrollment, by Percent Minority Students: 2022-23

 School Points

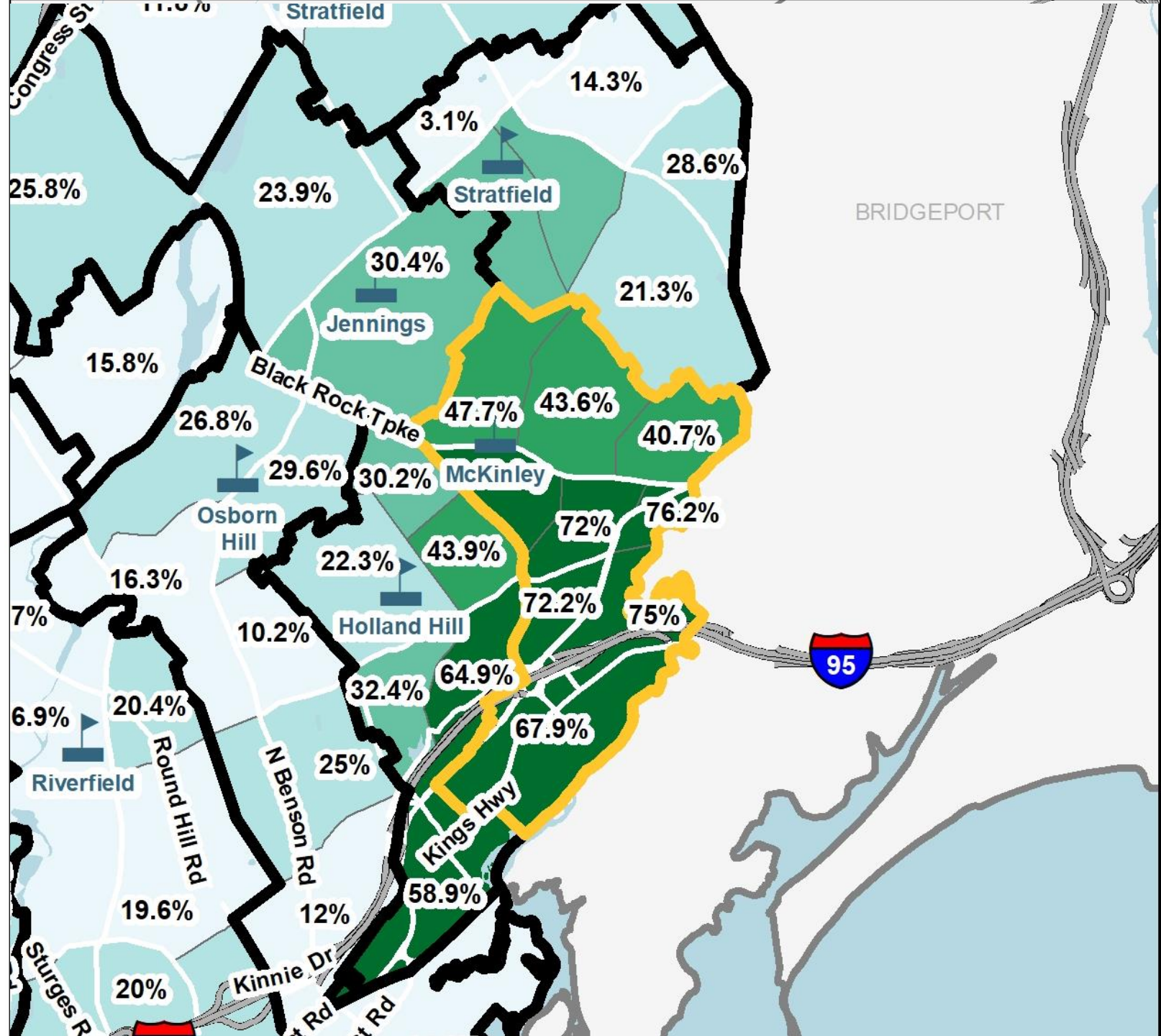
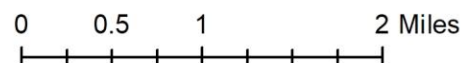
Percent Minority



Calculated based on PSIS Information provided by Fairfield Public Schools

**K-5 Districtwide Average
Percent Minority 2022-23: 26.7%**

**No school can exceed
51.7% minority students**



Scenario 4B Elementary Change Areas



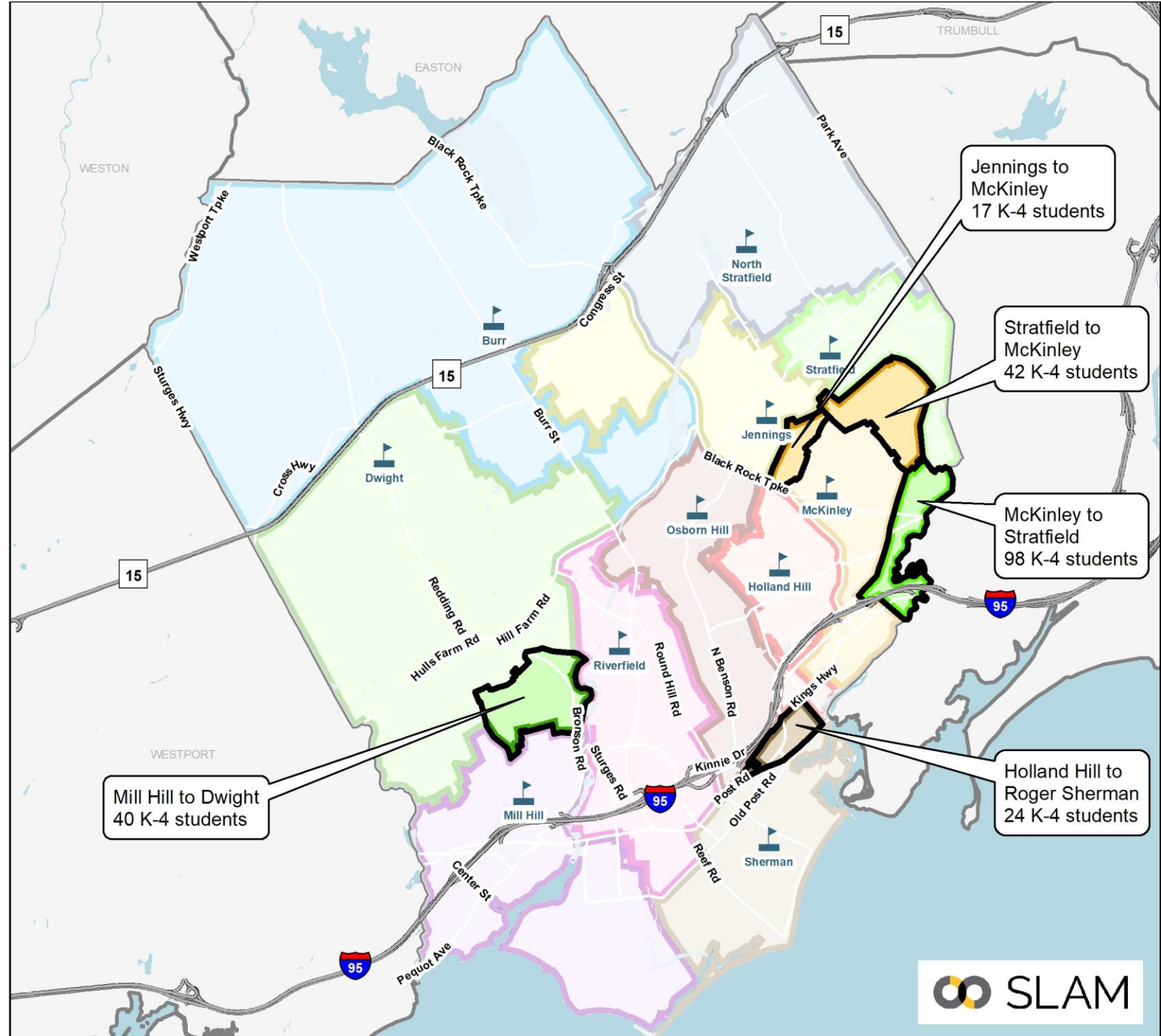
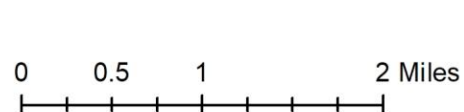
Redistricting Impacts (K-4):

- ~8% of elementary students

Greatest Share of Impacts to:

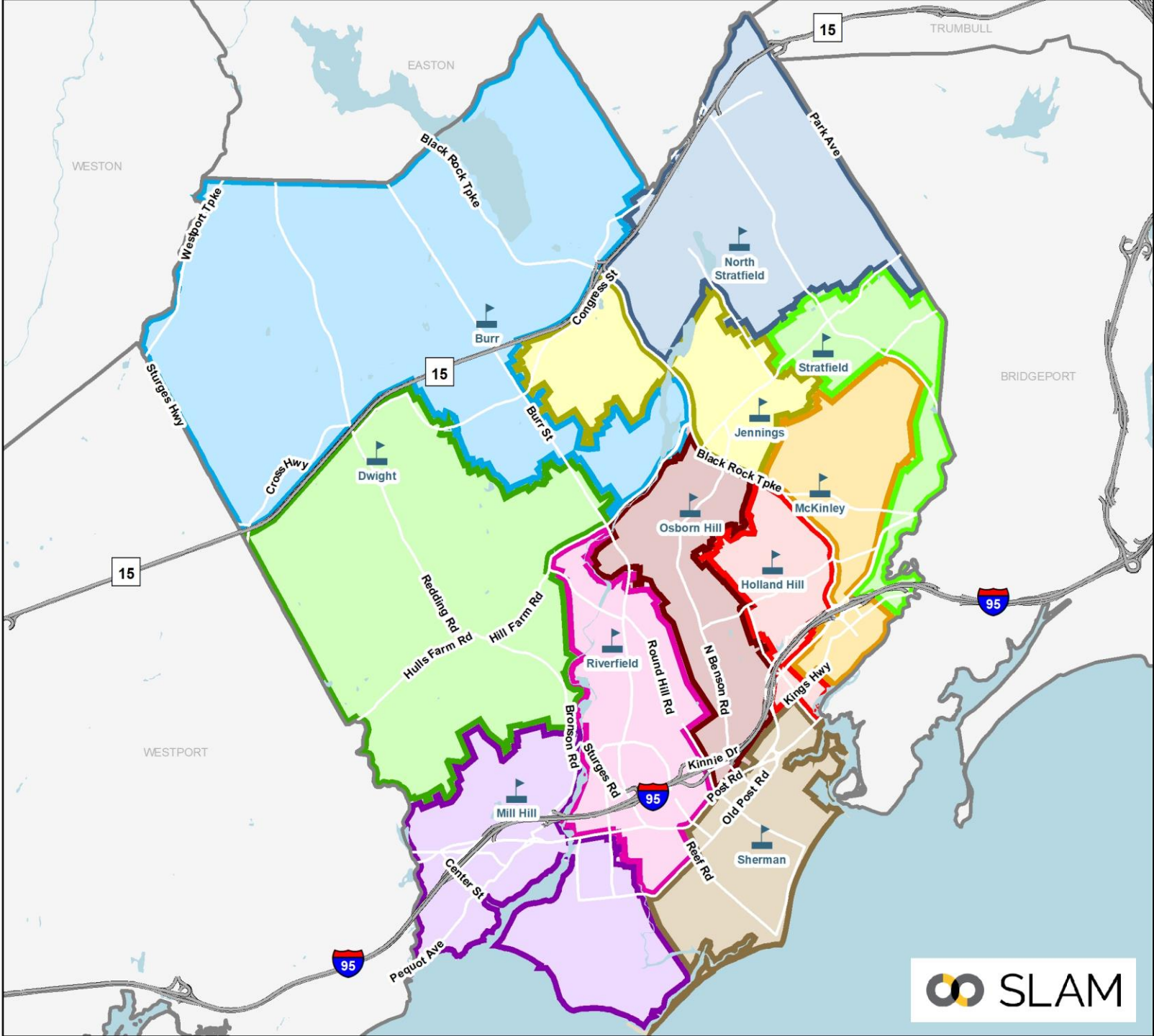
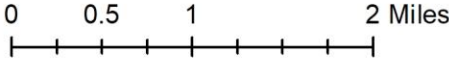
- McKinley: 34% of total impact
- Stratfield: 15% of total impact
- Mill Hill: 15% of total impact

Note: All students were returned to their zoned schools



Scenario 4B Elementary Districts

- | | |
|---|--|
|  Burr |  North Stratfield |
|  Dwight |  Osborn Hill |
|  Holland Hill |  Riverfield |
|  Jennings |  Roger Sherman |
|  McKinley |  Stratfield |
|  Mill Hill |  School Points |





Scenario 4B: Programs & Utilization

School	Capacity & Programs							Enrollment & Utilization (22-23)	
	Total Full-Sized CRs	K-5 Instruction	CLC	Early Literacy Academy	Therapeutic Learning Centers	ECC	K-5 Operational Capacity	Scenario 4B Enrollment	Scenario 4B Utilization
Burr	28	19	2	3	0	0	399	301	75.4%
Dwight	21	16	2	0	0	0	336	297	88.4%
Holland Hill	27	19	0	0	0	5	399	348	87.2%
Jennings	23	13	0	0	0	5	273	247	90.5%
McKinley	30	24	0	0	0	0	504	396	78.6%
Mill Hill	25	19	2	0	0	0	399	350	87.7%
North Stratfield	28	24	0	0	0	0	504	442	87.7%
Osborn Hill	30	22	2	0	0	0	462	434	93.9%
Riverfield	27	21	1	0	2	0	441	386	87.5%
Roger Sherman	25	22	0	0	0	0	462	428	92.6%
Stratfield	27	24	0	0	0	0	504	409	81.2%
Total All Schools	291	223	9	3	2	10	4,683	4,038	86.2%

- CLC shifted from Jennings to Dwight.
- ELA program shifts from McKinley to Burr.
- ECC space at Holland Hill and Jennings (4 classrooms + 1 support space each)



Scenario 4B: Racial Balance

- McKinley would have complied with the state racial balance law each of the last seven years, except for 2020-21.
- McKinley would have deviated from the districtwide average by an average of 23.3%, ranging from 22.1% to 25.0% over the last seven years.
- Holland Hill would have been impending imbalance for 3 of the last seven years, ranging from 12% to 16% higher than districtwide average.

Scenario 4B Racial Balance: 7-Year Look Back

School	2016-17	2017-18	2018-19	2019-20	2020-21	2021-22	2022-23	7-Yr Avg
Burr	15.6%	17.7%	17.6%	20.4%	19.9%	23.2%	23.6%	19.7%
% Deviation	-8.1%	-7.1%	-8.1%	-5.2%	-6.6%	-3.1%	-3.1%	-5.9%
Dwight	14.5%	12.5%	16.1%	15.4%	17.7%	16.3%	16.2%	15.5%
% Deviation	-9.3%	-12.3%	-9.5%	-10.2%	-8.8%	-10.0%	-10.6%	-10.1%
Holland Hill	39.8%	40.2%	40.1%	38.8%	38.8%	41.3%	40.5%	39.9%
% Deviation	16.1%	15.4%	14.4%	13.1%	12.3%	15.1%	13.8%	14.3%
Jennings	20.5%	25.7%	26.7%	27.0%	26.6%	23.8%	27.9%	25.5%
% Deviation	-3.2%	0.9%	1.1%	1.4%	0.1%	-2.5%	1.2%	-0.2%
McKinley	47.0%	46.9%	47.7%	48.6%	51.5%	50.5%	50.0%	48.9%
% Deviation	23.3%	22.1%	22.1%	22.9%	25.0%	24.2%	23.3%	23.3%
Mill Hill	19.5%	21.2%	20.3%	21.0%	22.5%	20.8%	20.9%	20.9%
% Deviation	-4.2%	-3.6%	-5.3%	-4.6%	-4.0%	-5.4%	-5.9%	-4.7%
North Stratfield	25.4%	24.9%	26.2%	24.7%	24.6%	24.4%	23.8%	24.9%
% Deviation	1.7%	0.1%	0.6%	-1.0%	-1.9%	-1.9%	-3.0%	-0.7%
Osborn Hill	15.1%	18.4%	20.3%	20.8%	22.7%	21.4%	21.0%	19.9%
% Deviation	-8.7%	-6.4%	-5.4%	-4.8%	-3.8%	-4.9%	-5.8%	-5.7%
Riverfield	13.6%	15.3%	16.3%	16.5%	16.8%	18.5%	18.1%	16.5%
% Deviation	-10.1%	-9.5%	-9.3%	-9.1%	-9.7%	-7.8%	-8.6%	-9.2%
Roger Sherman	16.0%	16.9%	18.0%	15.5%	15.9%	15.5%	18.7%	16.6%
% Deviation	-7.7%	-7.9%	-7.6%	-10.2%	-10.6%	-10.8%	-8.0%	-9.0%
Stratfield	31.7%	31.2%	30.1%	30.6%	30.3%	30.0%	32.5%	30.9%
% Deviation	8.0%	6.4%	4.4%	5.0%	3.9%	3.7%	5.8%	5.3%
K-5 Total	23.7%	24.8%	25.7%	25.6%	26.5%	26.3%	26.7%	25.6%

Impending Imbalance

Racially Imbalanced



Scenario 4B: Projected Utilization

Elementary Utilization													
School	22-23	23-24	24-25	25-26	26-27	27-28	28-29	29-30	30-31	31-32	32-33	1st 5 Year Avg	2nd 5 Year Avg
Burr	75.4%	77.2%	78.7%	78.2%	81.7%	81.0%	83.5%	84.5%	88.2%	89.5%	89.5%	79.3%	87.0%
Dwight	88.4%	87.2%	89.0%	86.6%	87.2%	86.9%	89.0%	89.9%	90.8%	92.0%	91.7%	87.4%	90.7%
Holland Hill	87.2%	89.2%	92.0%	92.2%	95.7%	96.0%	94.5%	95.7%	96.5%	97.0%	96.7%	93.0%	96.1%
Jennings	90.5%	92.3%	94.9%	92.7%	93.4%	94.9%	94.9%	96.3%	97.8%	98.9%	98.5%	93.6%	97.3%
McKinley	78.6%	81.2%	76.2%	78.0%	80.4%	81.9%	85.9%	88.5%	89.3%	90.1%	90.1%	79.5%	88.8%
Mill Hill	87.7%	88.2%	87.0%	88.7%	88.7%	89.5%	90.0%	91.2%	92.5%	93.7%	93.7%	88.4%	92.2%
North Stratfield	87.7%	88.7%	90.5%	89.9%	91.5%	89.9%	92.9%	92.7%	93.7%	95.0%	95.0%	90.1%	93.8%
Osborn Hill	93.9%	96.3%	97.6%	98.1%	100.9%	98.7%	97.0%	97.8%	98.9%	100.0%	99.6%	98.3%	98.7%
Riverfield	87.5%	87.5%	87.3%	88.7%	92.5%	89.3%	90.0%	91.4%	92.1%	93.2%	92.7%	89.1%	91.9%
Roger Sherman	92.6%	95.2%	95.2%	95.5%	93.7%	96.5%	97.0%	97.4%	98.1%	98.9%	99.1%	95.2%	98.1%
Stratfield	81.2%	83.9%	83.9%	84.3%	82.7%	83.7%	82.7%	83.5%	84.9%	86.1%	85.7%	83.7%	84.6%
Total	86.2%	87.8%	88.1%	88.3%	89.7%	89.6%	90.5%	91.5%	92.8%	93.8%	93.7%	88.7%	92.5%

Greatest Confidence – 1st 5-yrs

Reminder that 100% utilization means the building is at its operational target of 21 students per available classroom. This represents 87.5% of the maximum capacity.

- Overall utilization increases to about 94% of operational target by the 2031-32 school year.
- Over the next five years, all schools average +/-10% of districtwide utilization
 - Lowest utilization at Burr and McKinley, although utilization rate improves over the last five years of the projections as new housing is completed.
 - Highest utilization at Osborn Hill, which operates near 100% of operational target most years.



Scenario 4B: Projected Enrollment

Elementary Projections by School (Medium)

ES School	22-23	23-24	24-25	25-26	26-27	27-28	28-29	29-30	30-31	31-32	32-33	5-year Δ	10-year Δ
Burr	301	308	314	312	326	323	333	337	352	357	357	7.3%	18.6%
Dwight	297	293	299	291	293	292	299	302	305	309	308	-1.7%	3.7%
Holland Hill	348	356	367	368	382	383	377	382	385	387	386	10.1%	10.9%
Jennings	247	252	259	253	255	259	259	263	267	270	269	4.9%	8.9%
McKinley	396	409	384	393	405	413	433	446	450	454	454	4.3%	14.6%
Mill Hill	350	352	347	354	354	357	359	364	369	374	374	2.0%	6.9%
North Stratfield	442	447	456	453	461	453	468	467	472	479	479	2.5%	8.4%
Osborn Hill	434	445	451	453	466	456	448	452	457	462	460	5.1%	6.0%
Riverfield	386	386	385	391	408	394	397	403	406	411	409	2.1%	6.0%
Roger Sherman	428	440	440	441	433	446	448	450	453	457	458	4.2%	7.0%
Stratfield	409	423	423	425	417	422	417	421	428	434	432	3.2%	5.6%

Scenario 4B MS Boundaries

Scenario 4B MS

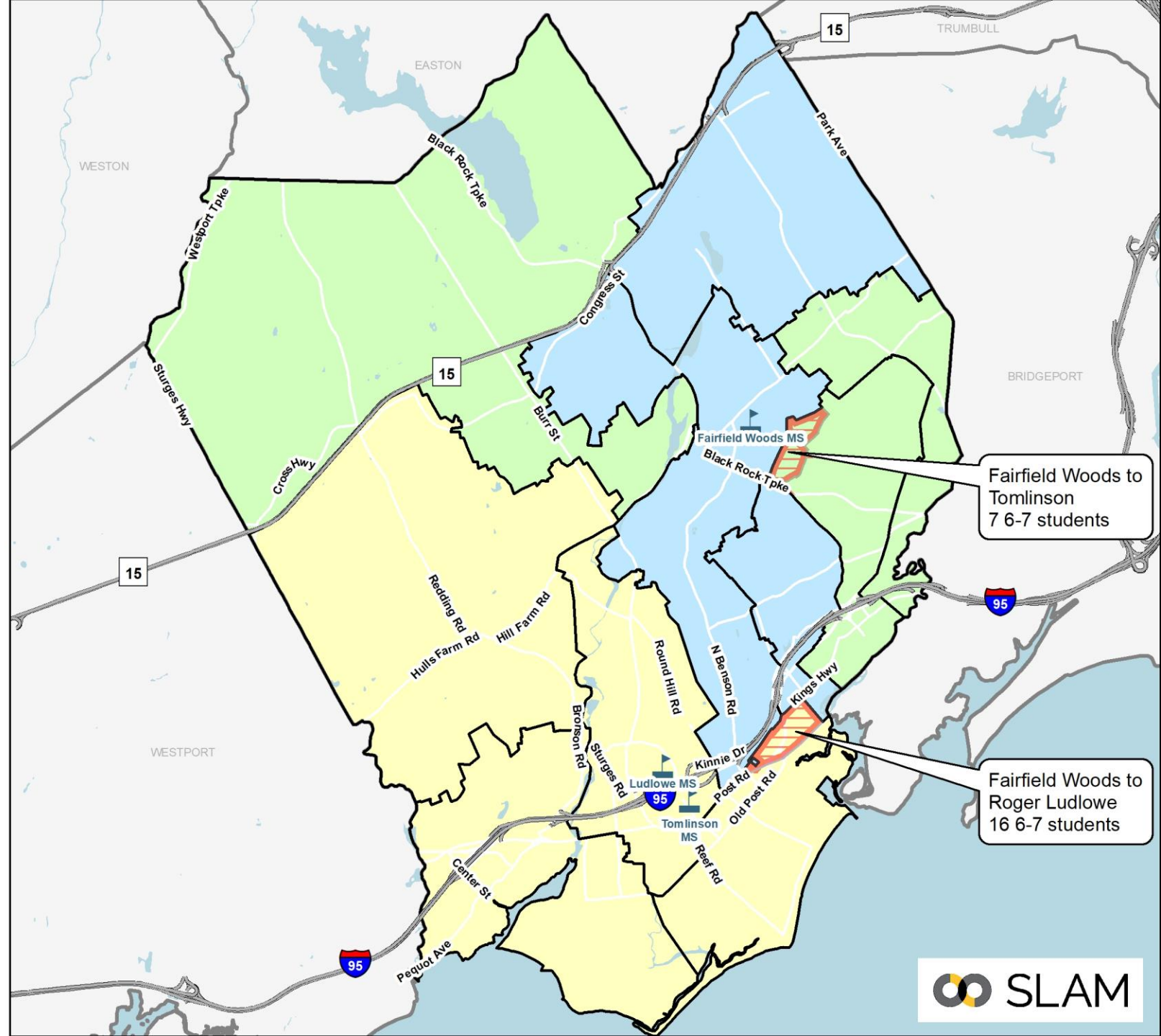
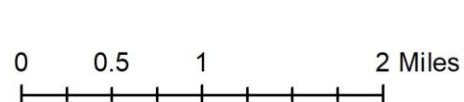


Maintains current feeder pattern based on modified elementary boundaries

Redistricting Impacts (6-7):

- About 2% of middle school students would be impacted,
- Impacts could be reduced with grandfathering

Note: All students were returned to their zoned schools



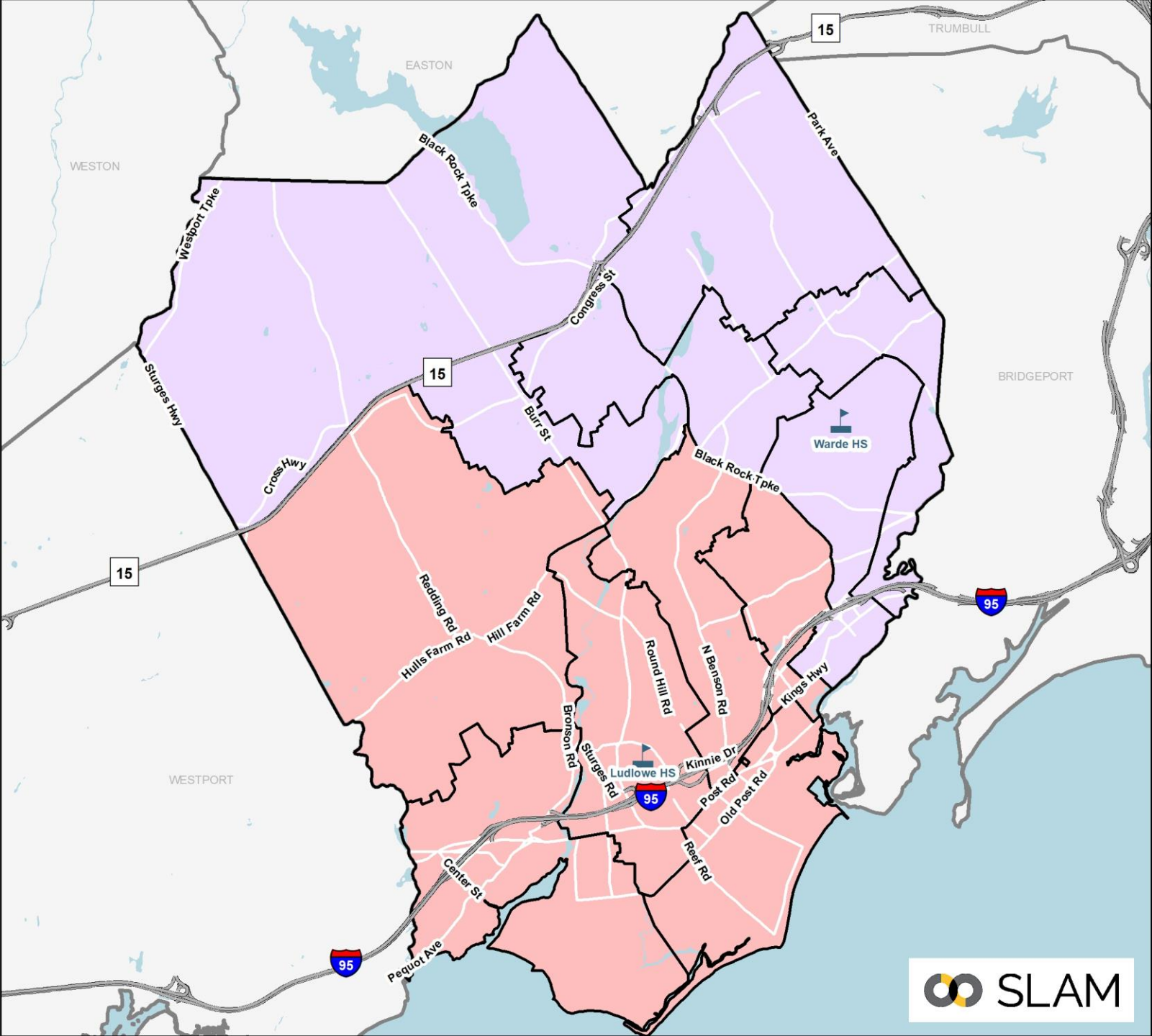
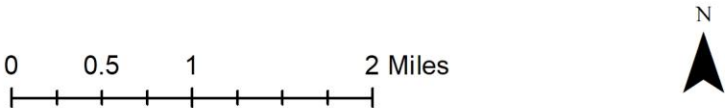
Scenario 4B HS Boundaries

Scenario 4B High School Boundaries

- Fairfield Ludlowe
- Fairfield Warde
- School Points
- HS Change Areas
- Elementary Districts

No changes to High School boundaries or feeder patterns

Note: All students were returned to their zoned schools





Scenario 4B: Projected MS & HS Enrollment

Middle Projections by School (Medium)

MS School	22-23	23-24	24-25	25-26	26-27	27-28	28-29	29-30	30-31	31-32	32-33	5-year Δ	10-year Δ
Fairfield Woods	720	709	703	751	756	830	826	846	810	806	827	15.3%	14.9%
Roger Ludlowe	789	766	751	732	734	759	766	757	737	740	756	-3.8%	-4.2%
Tomlinson	624	583	578	568	605	593	586	586	580	587	604	-5.0%	-3.2%

High Projections by School (Medium)

HS School	22-23	23-24	24-25	25-26	26-27	27-28	28-29	29-30	30-31	31-32	32-33	5-year Δ	10-year Δ
Fairfield Warde	1,388	1,348	1,285	1,272	1,206	1,196	1,202	1,199	1,277	1,277	1,264	-13.8%	-8.9%
Fairfield Ludlowe	1,528	1,535	1,452	1,426	1,379	1,351	1,339	1,355	1,404	1,402	1,411	-11.6%	-7.7%
Alternative HS	66	66	66	66	66	66	66	66	66	66	66	0.0%	0.0%

- Shifts some students out of Fairfield Woods to Roger Ludlowe and Tomlinson.
 - Cohort sizes range from 250 to 300 at Fairfield Woods, ~230 to 270 at Roger Ludlowe, ~and ~180 to 210 at Tomlinson.
 - Large bubble class enters Fairfield Woods beginning in 2027-28.



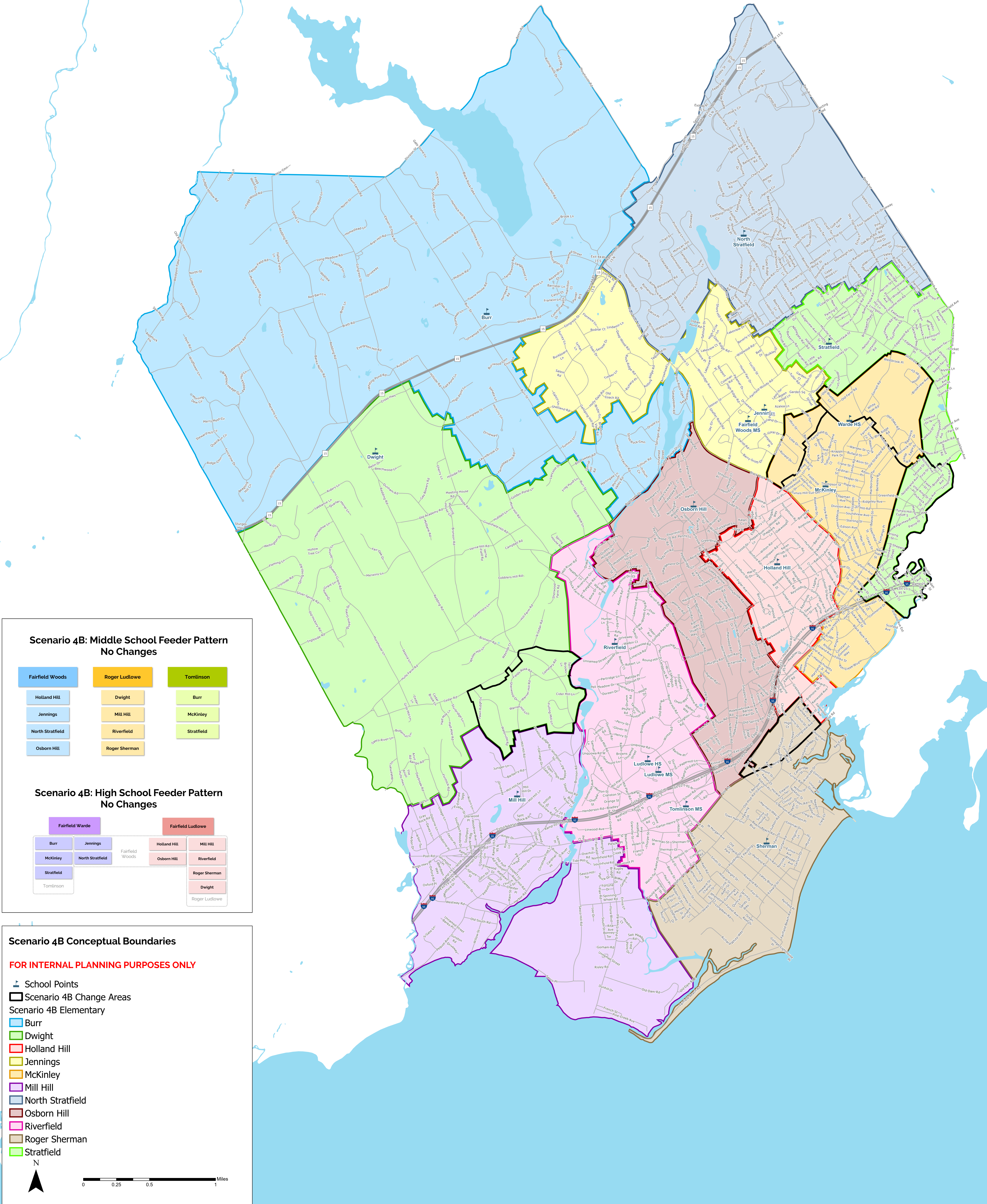
Scenario 4B: Considerations

- Maintains 11 elementary school alignment with contiguous attendance zones.
- McKinley would have deviated from the districtwide average by an average of 23.3%, ranging from 22.1% to 25.0% over the last seven years.
 - May not be sustainable in the long term
 - Holland Hill also in the “impending imbalance” category for three out of the last seven years.
- Somewhat balanced utilization. All schools within 10% of districtwide average over the next five years, with gap shrinking over the final five years.
- Redistricting impacts to ~8% of elementary students. About half of the impact of original Scenario 4.
 - Impacts to ~2% of elementary walkers.
- Redistricting impacts to ~2% of middle school students
- No impacts to high school students

Objective	Description	Score
Address Racial Imbalance	McKinley would have been at or slightly below 25% of districtwide average over the last 7 years.	Fair/Poor
Balance Utilization Across all Elementary Schools	All schools within 10% of districtwide average for the first 5 years of the projections	Fair
Minimize Redistricting Impacts	8% of elementary students	Good
Student Walker Impacts	Net impacts to ~2% of elementary walkers. Some impacted walkers may be able to walk to new school.	Good
Secondary School Impacts	No changes to MS feeder No changes to HS feeder 3% of MS students impacted No changes to HS attendance zones	

Scenario 4B Conceptual Boundaries

FOR INTERNAL PLANNING PURPOSES ONLY



SCENARIO 4B

Fairfield Public Schools Elementary School Enrollment Projections 2023-24							
School	K	1	2	3	4	5	K-5th
Burr	47	48	62	45	58	48	308
Dwight	40	41	51	53	58	50	293
Holland Hill	60	64	62	51	63	56	356
Jennings	41	40	42	42	51	36	252
McKinley	64	53	67	66	64	95	409
Mill Hill	54	57	67	60	50	64	352
North Stratfield	68	62	91	73	84	69	447
Osborn Hill	68	84	89	70	70	64	445
Riverfield	63	62	82	53	58	68	386
Roger Sherman	71	75	65	88	72	69	440
Stratfield	66	75	68	78	67	69	423
TOTAL	642	661	746	679	695	688	4111

Fairfield Public Schools Elementary School Enrollment Projections 2024-25							
School	K	1	2	3	4	5	K-5th
Burr	47	51	48	64	45	59	314
Dwight	41	45	43	55	54	61	299
Holland Hill	61	58	65	62	56	65	367
Jennings	41	40	41	43	45	49	259
McKinley	65	66	55	67	65	66	384
Mill Hill	55	56	58	69	60	49	347
North Stratfield	69	70	66	91	76	84	456
Osborn Hill	69	73	83	89	68	69	451
Riverfield	64	64	63	83	53	58	385
Roger Sherman	71	75	73	66	86	69	440
Stratfield	67	68	73	69	77	69	423
TOTAL	650	666	668	758	685	698	4125

Fairfield Public Schools Elementary School Enrollment Projections 2025-26							
School	K	1	2	3	4	5	K-5th
Burr	48	52	52	50	64	46	312
Dwight	40	46	46	47	56	56	291
Holland Hill	60	60	59	65	68	56	368
Jennings	41	41	41	42	45	43	253
McKinley	66	68	70	56	66	67	393
Mill Hill	55	57	57	59	68	58	354
North Stratfield	68	71	74	67	96	77	453
Osborn Hill	68	73	73	84	87	68	453
Riverfield	63	65	64	64	82	53	391
Roger Sherman	70	74	72	73	66	86	441

Stratfield	66	69	67	74	69	80	425
TOTAL	645	676	675	681	767	690	4134

Fairfield Public Schools Elementary School Enrollment Projections 2026-27							
School	K	1	2	3	4	5	K-5th
Burr	52	53	52	54	50	65	326
Dwight	43	45	49	51	47	58	293
Holland Hill	65	58	60	59	71	69	382
Jennings	43	41	42	42	44	43	255
McKinley	71	69	71	71	55	68	405
Mill Hill	59	56	57	58	58	66	354
North Stratfield	74	70	76	74	70	97	461
Osborn Hill	74	73	74	74	83	88	466
Riverfield	68	64	65	65	63	83	408
Roger Sherman	75	74	72	73	74	65	433
Stratfield	71	68	67	67	74	70	417
TOTAL	695	671	685	688	689	772	4200

Fairfield Public Schools Elementary School Enrollment Projections 2027-28							
School	K	1	2	3	4	5	K-5th
Burr	53	57	54	54	54	51	323
Dwight	44	49	47	52	51	49	292
Holland Hill	64	63	59	60	65	72	383
Jennings	44	43	42	43	45	42	259
McKinley	72	73	72	71	69	56	413
Mill Hill	61	63	58	59	58	58	357
North Stratfield	75	76	74	78	78	72	453
Osborn Hill	74	79	73	75	72	83	456
Riverfield	68	68	64	66	65	63	394
Roger Sherman	75	79	72	74	73	73	446
Stratfield	72	74	66	67	67	76	422
TOTAL	702	724	681	699	697	695	4198

Fairfield Public Schools Elementary School Enrollment Projections 2028-29							
School	K	1	2	3	4	5	K-5th
Burr	52	58	57	56	55	55	333
Dwight	41	49	52	51	53	53	299
Holland Hill	62	62	63	59	65	66	377
Jennings	42	43	44	42	45	43	259
McKinley	69	75	76	72	70	71	433
Mill Hill	58	63	63	59	59	57	359
North Stratfield	71	77	81	77	82	80	468
Osborn Hill	71	79	80	74	72	72	448
Riverfield	65	68	69	65	65	65	397

Roger Sherman	73	81	75	73	74	72	448
Stratfield	68	75	73	66	67	68	417
TOTAL	672	730	733	694	707	702	4238

Fairfield Public Schools Elementary School Enrollment Projections 2029-30							
School	K	1	2	3	4	5	K-5th
Burr	54	56	58	59	55	55	337
Dwight	42	46	52	56	51	55	302
Holland Hill	64	60	63	63	65	67	382
Jennings	43	42	44	46	45	43	263
McKinley	73	72	79	77	72	73	446
Mill Hill	59	60	64	65	58	58	364
North Stratfield	73	73	80	82	78	81	467
Osborn Hill	72	77	79	80	72	72	452
Riverfield	67	66	69	70	65	66	403
Roger Sherman	76	76	77	76	73	72	450
Stratfield	70	70	73	72	67	69	421
TOTAL	693	698	738	746	701	711	4287

Fairfield Public Schools Elementary School Enrollment Projections 2030-31							
School	K	1	2	3	4	5	K-5th
Burr	56	59	57	62	61	57	352
Dwight	43	48	48	56	57	53	305
Holland Hill	64	62	61	63	69	66	385
Jennings	44	43	43	46	48	43	267
McKinley	74	74	75	78	76	73	450
Mill Hill	60	62	61	65	64	57	369
North Stratfield	75	75	77	81	84	80	472
Osborn Hill	74	78	75	80	78	72	457
Riverfield	68	67	67	70	69	65	406
Roger Sherman	74	79	74	78	76	72	453
Stratfield	72	73	69	73	73	68	428
TOTAL	704	720	707	752	755	706	4344

Fairfield Public Schools Elementary School Enrollment Projections 2031-32							
School	K	1	2	3	4	5	K-5th
Burr	56	61	59	58	62	61	357
Dwight	43	48	50	52	57	59	309
Holland Hill	64	62	62	61	68	70	387
Jennings	44	44	44	44	48	46	270
McKinley	73	75	77	75	77	77	454
Mill Hill	60	62	62	63	65	62	374
North Stratfield	75	76	79	78	85	86	479
Osborn Hill	74	79	78	76	77	78	462

Riverfield	68	69	68	68	69	69	411
Roger Sherman	74	80	76	74	78	75	457
Stratfield	71	74	72	69	73	75	434
TOTAL	702	730	727	718	759	758	4394

Fairfield Public Schools Elementary School Enrollment Projections 2032-33							
School	K	1	2	3	4	5	K-5th
Burr	56	61	60	61	57	62	357
Dwight	43	48	51	55	52	59	308
Holland Hill	63	62	63	62	67	69	386
Jennings	43	44	44	45	47	46	269
McKinley	73	74	79	77	73	78	454
Mill Hill	60	62	63	64	62	63	374
North Stratfield	74	76	80	80	82	87	479
Osborn Hill	73	79	79	78	74	77	460
Riverfield	67	69	69	68	67	69	409
Roger Sherman	74	80	76	77	74	77	458
Stratfield	71	73	73	71	69	75	432
TOTAL	697	728	737	738	724	762	4386

FAIRFIELD BOARD OF EDUCATION AGENDA ITEM

For Consideration by the Board of Education at the Meeting of: August 29, 2023

Prepared By: Dr. Zakia Parrish, Deputy Superintendent

Presented By: Dr. Zakia Parrish, Deputy Superintendent

Attachments: 2023-2024 Elementary Enrollment Report (as of August 23, 2023)

Subject: 2023-2024 Elementary Enrollment Report (as of August 23, 2023)

Relation to District Improvement Plan: This is the enrollment report for grades K-5, as of August 23, 2023, for the 2023-2024 school year.

Background:

The current enrollment in grades K-5 reflect 31 less students than the projection. During the 2022-2023 school year, kindergarten enrollment increased by 168 students between May and September, which were 465 and 633 students, respectively.

There are three schools with one grade level at the class size threshold:

- McKinley: grade four
- North Stratfield: grade four
- Osborn Hill: grade two

There are two elementary schools who need fewer sections than what was budgeted:

- McKinley: one section in grade four
- Sherman: one section in grade three

There are five elementary schools who need more sections than what was budgeted:

- Burr: one section in grade two
- Holland Hill: one section in grade one
- Jennings: one section in kindergarten
- Mill Hill: one section in grade five
- Riverfield: one section in grade three

There are 204 sections needed based on the current enrollment, which is three sections more than what was included in the budget.

Status: The enrollment will continue to be monitored through the start of the school year in order to assess impact on the number of sections needed beyond what was budgeted.

RECOMMENDATION: For review only.

Elementary Enrollment Report
2023 - 2024 Projected and Actual Enrollment

Class size: K-2 cap 23. McKinley cap 21
3-5 cap 25. McKinley cap 23
August 23, 2023

2023 - 2024 Projected Enrollment										2023 - 2024 Actual Enrollment										# Sections Changes Budget to Budget	
Burr	K	1	2	3	4	5	Total	Avg.	Total # Sections	K	1	2	3	4	5	Total	Avg.	Total # Sections	1		
										17											
	19 18 22 17 20 20									18 18 18 17 21 19											
	19 19 22 18 21 21									18 19 18 18 21 20											
	20 19 23 18 21 21									18 19 18 18 22 20											
							358	19.9	18								357	18.8	19		
Dwight	K	1	2	3	4	5	Total	Avg.	Total # Sections	K	1	2	3	4	5	Total	Avg.	Total # Sections	0		
	17 16 19 22 22 20									17 17 19 20 24 19											
	18 17 19 23 23 20									17 17 19 21 24 20											
	35 33 38 45 45 40									34 34 38 41 48 39											
							236	19.7	12								234	19.5	12		
Holland Hill	K	1	2	3	4	5	Total	Avg.	Total # Sections	K	1	2	3	4	5	Total	Avg.	Total # Sections	1		
										17											
	20 22 20 19 22 19									17 17 21 19 20 20											
	20 23 21 19 22 19									18 18 22 19 20 20											
	20 23 21 19 22 20									18 18 22 20 20 21											
							371	20.6	18								367	19.3	19		
1 student below class size threshold										1 student above class size threshold											
Jennings	K	1	2	3	4	5	Total	Avg.	Total # Sections	K	1	2	3	4	5	Total	Avg.	Total # Sections	1		
	21 19 16 21 18 21									17 20 16 22 17 21											
	22 20 16 22 18 21									18 20 17 22 18 22											
	43 39 47 43 54 42									52 40 49 44 52 43											
							268	19.1	14								280	18.7	15		
1 student above class size threshold																					
McKinley	K	1	2	3	4	5	Total	Avg.	Total # Sections	K	1	2	3	4	5	Total	Avg.	Total # Sections	-1		
	18									18											
	17 18 18 21 18 18									19 19 17 21 23 19											
	17 18 18 21 18 19									19 19 18 21 23 19											
	18 19 18 21 18 19									19 19 18 21 23 19											
							467	18.7	25								469	19.5	24		
1 student above class size threshold										At class size threshold										1	
																		25			
Mill Hill	K	1	2	3	4	5	Total	Avg.	Total # Sections	K	1	2	3	4	5	Total	Avg.	Total # Sections	1		
	20									20											
	20 21 20 23 20 24									18 20 20 23 19 19											
	20 21 21 24 20 25									19 21 20 23 19 20											
	20 21 21 24 20 25									19 21 20 24 20 20											
							410	21.6	19								404	20.2	20		
1 student below class size threshold																					
North Stratfield	K	1	2	3	4	5	Total	Avg.	Total # Sections	K	1	2	3	4	5	Total	Avg.	Total # Sections	0		
	21									21											
	21 20 21 23 24 21									19 22 21 23 25 21											
	21 20 21 24 24 21									19 22 21 24 25 21											
	22 21 22 24 24 21									19 22 21 24 25 21											
							416	21.9	19								416	21.9	19		
										At class size threshold										1	
																		20			

Elementary Enrollment Report
2023 - 2024 Projected and Actual Enrollment

Class size: K-2 cap 23. McKinley cap 21
3-5 cap 25. McKinley cap 23
August 23, 2023

Osborn Hill								Total #	Avg.	Sections								Total #	Avg.	Sections	# Sections Changes Budget to
	K	1	2	3	4	5	Total				K	1	2	3	4	5	Total				
			19																		
			20	19							17	19	23								
	23	20	19	23	23	22					17	19	23	23	24	21					
	23	21	19	23	24	22					18	20	23	23	24	21					
	23	21	19	23	24	22					18	20	23	23	25	22					
	69	82	95	69	71	66	452	21.5		21	70	78	92	69	73	64	446	21.2		21	0
At class size threshold										1	At class size threshold									1	
										22										22	

Riverfield								Total #	Avg.	Sections								Total #	Avg.	Sections	# Sections Changes Budget to
	K	1	2	3	4	5	Total				K	1	2	3	4	5	Total				
			20										20								
	20	21	21		20	22					21	22	20	18	20	23					
	20	22	21	25	20	23					21	22	20	19	20	23					
	21	22	21	25	20	23					22	22	21	19	20	23					
	61	65	83	50	60	68	387	21.5		18	64	66	81	56	60	69	396	20.8		19	1
At class size threshold										1											
										19											

Sherman								Total #	Avg.	Sections								Total #	Avg.	Sections	# Sections Changes Budget to
	K	1	2	3	4	5	Total				K	1	2	3	4	5	Total				
				19																	
	21	22	19	19	23	21					17	20	20	23	22	21					
	22	22	20	19	23	21					17	20	20	23	22	21					
	22	22	20	20	23	22					17	21	21	23	22	21					
	65	66	59	77	69	64	400	21.1		19	51	61	61	69	66	63	371	20.6		18	-1

Stratfield								Total #	Avg.	Sections								Total #	Avg.	Sections	# Sections Changes Budget to
	K	1	2	3	4	5	Total				K	1	2	3	4	5	Total				
	19	18	18	19	21	19					15	19	18	19	22	19					
	19	18	19	19	21	19					16	19	18	20	22	19					
	19	18	19	20	21	20					16	19	18	20	22	19					
	57	54	56	58	63	58	346	19.2		18	47	57	54	59	66	57	340	18.9		18	0
##	661	746	679	695	688		4,111				614	666	745	674	691	##	4,080			(31)	Students

Sections	2023-2024 Projection							Total	2023-2024 Projection							Total			
	K	1	2	3	4	5	K		1	2	3	4	5						
	32	33	38	32	33	33		201	34	34	38	32	32	34		204	3	Net Sections	
	1	0	0	1	0	0		2	0	0	1	0	2	0		3			
	33	33	38	33	33	33		203	34	34	39	32	34	34		207	4	Net Sections	
Potential Changes to Budget Sections									Potential Changes to Budget Sections										
At class size threshold									At class size threshold										

Fairfield Public Schools
2022-23 MAINTENANCE PROJECTS

	School	Description	BOE Approved Budget	Internal Transfers	Board Transfers	End-of-Year Projects	Priority List	Priority #	Status as of August 25. 2023	Estimated Date of Completion
1	Burr Elementary	Gym floor replacement (court flooring)	\$ 98,716						Completed	Completed
2	Burr Elementary	Gym Flooring change order				\$ 18,524				
3	Osborn Hill Elementary	Student bathroom repair/replacement project (2 bathrooms-tile work, dividers and fixtures)	\$ 100,000						Substantially Completed	September-2023
4	Fairfield Ludlowe High	Multisport digital scoreboard (\$75,000 from State Grant)	\$ 140,000	\$ 9,339	\$ 106,722				In progress	September-2023
5	Tomlinson Middle School	Replace rooftop chiller	\$ 313,500	\$ 2,646	\$ 376,343				\$376,343 transferred requested in January - Ordered	Expected delivery spring of 2024
6	Central Office	Ai-phone replacement			\$ 22,483				Completed	Completed
7	Holland Hill Elementary	Blackout shades - rooms 13 and 17			\$ 13,611				Completed	Completed
8	McKinley Elementary	Blackout shades - Nurses Office			\$ 4,092				Completed	Completed
9	Osborn Hill	Bathroom Renovation			\$ 195,000				Substantially Completed	September-2023
10	Sherman Elementary	Asbestos abatement faculty lounge		\$ 5,378					Completed	Completed
11	Sherman Elementary	Asbestos testing, removal and floor replacement in classroom #2		\$ 16,208					Completed	Completed
12	Fairfield Woods Middle	Change Order to elevator upgrade (difference between budget and actual const - non-recurring project)			\$ 45,680				Completed	Completed
13	Roger Ludlowe Middle	Ai-phone replacement			\$ 22,483				Completed	Completed
14	Tomlinson Middle School	Hot water tank replacement		\$ 43,000					Completed	Completed
15	Fairfield Ludlowe High School	Shot clocks (2)		\$ 6,769					Ordered	No shipping date as of yet
16	Fairfield Ludlowe High School	Refinish gym floor		\$ 40,500					Completed	Completed
17	Fairfield Ludlowe High School	Elevator Replacement (difference between budget and actual const - non-recurring project)			\$ 37,871				PO issued	Spring-2024
18	Fairfield Ludlowe High School	Repair landing on stairwell one		\$ 16,000					Completed	Completed
19	Fairfield Warde High School	Shot clocks (2)		\$ 14,280					Completed	Completed
20	Fairfield Warde High School	Fiber Optic and trench work for internet access to press box		\$ 21,287					Completed	Completed
21	Fairfield Warde High School	Refinish gym floor		\$ 60,750					Completed	Completed
22	Fairfield Warde High School	Blackout shades - rooms T-19, T-27, T-33, and P-13			\$ 25,007				Completed	Completed

**Fairfield Public Schools
2022-23 MAINTENANCE PROJECTS**

	School	Description	BOE Approved Budget	Internal Transfers	Board Transfers	End-of-Year Projects	Priority List	Priority #	Status as of August 25. 2023	Estimated Date of Completion
23	Fairfield Warde High School	Rebuild bullpens at baseball field		\$ 7,400					Completed	Completed
24	Fairfield Warde High School	Replace Baseball/Softball field bleachers		\$ 65,210					Work in progress	September-2023
25	Districtwide	HVAC Repairs			\$ 63,320				On-going	Equipment ordered
26	Districtwide	Planning and Consulting- SLAM redistricting			\$ 101,000				In progress	
27	Jennings Elementary	Clean and install stage curtain (includes adding fire retardant)		\$ 11,960					Completed	Completed
28	Fairfield Ludlowe High School	Track fence repair		\$ 4,924					Completed	Completed
29	Tomlinson Middle School	Paint locker room		\$ 16,595					Completed	Completed
30	Tomlinson Middle School	Replace flooring - Hallway 322, Rooms 305 and 307, office 366 main area		\$ 17,595					Completed	Completed
31	Sturges Park	Resurface playing field				\$ 115,376			Completed	Completed
32	Sturges Park	Resurface playing field				\$ 404			Actual Cost \$115,780	
33	Walter Fitzgerald	Kitchen Renovation				\$ 400,000			In progress	November-2023
34	Walter Fitzgerald	Kitchen Renovation				\$ (296,034)			Actual cost \$100,966	
35	Districtwide	Paving				\$ 300,000			Completed	Completed
36	Districtwide	Paving				\$ (77,852)			Estimated cost \$ 222,148	
37	Districtwide	Painting				\$ 150,000			Completed	Completed
38	Districtwide	Painting				\$ 39,469			PO issued -Actual cost \$189,469	
39	Holland Hill Elementary	To install intercom motherboard for 911 display to identify classroom # during an emergency			\$ 4,260				Completed	Completed
40	Holland Hill Elementary	Resurface playing field				\$ 108,550			Work in progress	September-2023
41	McKinley Elementary	Cafeteria table repairs				\$ 10,920			In progress	Waiting on parts
42	Mill Hill Elementary	To install intercom motherboard for 911 display to identify classroom # during an emergency			\$ 4,260				Completed	Completed
43	Riverfield Elementary	iPhone System replacement			\$ 5,927				Completed	Completed
44	Roger Ludlowe Middle	To install intercom motherboard for 911 display to identify classroom # during an emergency			\$ 5,820				Completed	Completed

**Fairfield Public Schools
2022-23 MAINTENANCE PROJECTS**

	School	Description	BOE Approved Budget	Internal Transfers	Board Transfers	End-of-Year Projects	Priority List	Priority #	Status as of August 25. 2023	Estimated Date of Completion
45	Roger Ludlowe Middle	Additional speakers for PA system			\$ 18,527				Completed	Completed
46	Fairfield Ludlowe High School	To install intercom motherboard for 911 display to identify classroom # during an emergency			\$ 7,380				Completed	Completed
47	Fairfield Ludlowe High School	Sunshades for concession stand				\$ 30,768			Completed	Completed
48	Fairfield Ludlowe High School	Change order to flooring contractor for large gym floor refinish project				\$ 9,000			Completed	Completed
49	Fairfield Ludlowe High School	Bathroom/Weightroom Renovation				\$ 226,167			In progress	September-2023
50	Fairfield Ludlowe High School	Bathroom/Weightroom Renovation				\$ (166,023)			PO issued -Actual cost 60,144	
51	Fairfield Warde High School	Change order to flooring contractor for large gym floor refinish project				\$ 9,000			Completed	Completed
52	Fairfield Warde High School	Replace Auto Lifts				\$ 12,884			In progress	September-2023
53	Fairfield Warde High School	Replace Auto Lifts				\$ (3,823)			Adjusted \$3,823.07 covered under operating	
54	Tomlinson Middle School	To install intercom motherboard for 911 display to identify classroom # during an emergency			\$ 5,820				Completed	Completed
55	Tomlinson Middle School	Cafeteria table stool repairs				\$ 3,269			In progress	Waiting on parts
56	Districtwide	Change order for additional recommissioning work				\$ 14,974			In progress	September-2023
57	Districtwide	Kiln Repair				\$ 6,247			Completed	Completed
58	Districtwide	Playground chips and repairs				\$ 35,135			Completed	Completed
59	Districtwide	Playground repairs				\$ 17,496			Completed	Completed
60	Districtwide	Furniture moves				\$ 16,740			Completed	Completed
61	Districtwide	Furniture moves				\$ (2,492)			Adjusted \$2,492 cover under operating	
62	McKinley Elementary	Playground resurfacing				\$ 104,306			Completed	Completed
63	McKinley Elementary	Playground resurfacing				\$ 103,925			Completed	
64	Fairfield Woods Middle	Flooring				\$ 18,142			Completed	Completed
65	Tomlinson Middle School	Tractor replacement				\$ 18,552			Completed	Completed
66	Tomlinson Middle School	Tractor replacement				\$ 1,356			PO issue - Actual Cost \$19,908	

Fairfield Public Schools
2022-23 MAINTENANCE PROJECTS

	School	Description	BOE Approved Budget	Internal Transfers	Board Transfers	End-of-Year Projects	Priority List	Priority #	Status as of August 25. 2023	Estimated Date of Completion
67	Riverfield Elementary	RTU 1				\$ 54,341			Completed	Completed
68	Riverfield Elementary	RTU 1				\$ (7,857)			PO Issued - Adjusted \$46,483.57 cover under operating	Completed
69	Fairfield Woods	Two compressor replacements on RTU14				\$ 20,044			In progress	Scheduled for September 25, 2023
70	Fairfield Ludlowe High	Replace RTU 7, 11 and 12				\$ 202,287			In progress	Spring -2024
71	Fairfield Ludlowe High	Replace six steam control valves				\$ 6,680			In progress	Parts Ordered
72	Fairfield Warde High	Install new wireless microphone for Auditorium				\$ 7,707			Completed	Completed
73	Transportation	Gas Storage Tank Installation (2,000 gallons)				\$ 94,281			In progress	Spring of 2024
74	Districtwide	Installation of 112 smartboards				\$ 16,200			Completed	Completed
75	Districtwide	Security Project				\$ 40,445			In progress	September-2023
76	Districtwide	Grounds and Fencing Repairs				\$ 36,978			Completed	Completed
77	Burr Elementary	Fire and burglar alarm code compliance update					\$ 91,192	2		
78	Central Office	Carpet flooring replacement					\$ 178,200	2		
79	Dwight Elementary	Repair grade washout along side of building					\$ 5,400	2		

**Fairfield Public Schools
2022-23 MAINTENANCE PROJECTS**

	School	Description	BOE Approved Budget	Internal Transfers	Board Transfers	End-of-Year Projects	Priority List	Priority #	Status as of August 25. 2023	Estimated Date of Completion
80	North Stratfield Elementary	Replace exterior doors from classrooms					\$ 41,580	2		
81	Fairfield Woods Middle School	Repair unit ventilators and exhaust systems					\$ 32,400	2		
82	Tomlinson Middle School	Stairwell occupancy gate					\$ 8,640	2		
83	Fairfield Ludlowe High	Reconfigure driveway to accommodate student/staff additional parking				\$ 108,000	\$ -	2	Completed	Completed
84	Fairfield Ludlowe High	Reconfigure driveway to accommodate student/staff additional parking				\$ (32,183)		2		Completed
85	Fairfield Ludlowe High	Reconfigure driveway to accommodate student/staff additional parking-Prune trees in front of school to improve visual site lines for safety reasons				\$ 11,316			PO Entered Actual cost \$87,113	Completed
86	Fairfield Ludlowe High	New renovation of concession building 2nd floor for football locker room					\$ 216,000	2		
87	Fairfield Ludlowe High	Main entrance lobby sound absorbing panels project.					\$ 36,180	2		
88	Fairfield Ludlowe High	Power wash school building					\$ 38,005	2		
89	Fairfield Ludlowe High	Replace cabinets in culinary lab (Room 145)					\$ 21,600	2		
90	Fairfield Ludlowe High	Outdoor storage facility for Drama Dept.				\$ 30,000		2	Completed	Completed
91	Fairfield Ludlowe High	Outdoor storage facility for Drama Dept.				\$ (13,433)			Actual cost \$16,567	Summer 2023
92	Fairfield Warde High	Small gymnasium operable partition replacement					\$ 114,107	2		
93	Fairfield Warde High	Wresting practice room renovation					\$ 46,440	2		
94	Dwight Elementary	Quick connects for emergency generator hook-up					\$ 5,400	3		
95	Dwight Elementary	Install sound barrier for the stage area at cafeteria side					\$ 29,700	3		
96	Fairfield Ludlowe High	Student kitchen layout redesign					\$ 81,000	3		
97	Fairfield Ludlowe High	Modifications to kitchen exhaust (dish washing room)					\$ 21,600	3		
98	Fairfield Ludlowe High	Repair window hardware in lower level art room					\$ 11,880	3		
99	Fairfield Warde High	Greenhouse replacement on classrooms					\$ 115,560	3		
100	Jennings Elementary	Install Johnsonite 9' tread riser combo stair treads with visually impaired grit					\$ 4,865	3		

Fairfield Public Schools
2022-23 MAINTENANCE PROJECTS

	School	Description	BOE Approved Budget	Internal Transfers	Board Transfers	End-of-Year Projects	Priority List	Priority #	Status as of August 25. 2023	Estimated Date of Completion
101	Osborn Hill Elementary	New enclosure around dumpster area					\$ 11,340	3		
102	Osborn Hill Elementary	Install sound barrier for the stage area					\$ 25,596	3		
103	Roger Ludlowe Middle School	Remove rock garden and pave with Bituminous material					\$ 16,200	3		
104	Roger Ludlowe Middle School	Exterior rain splash drains for doors					\$ 16,200	3		
105	System wide	Restroom ceramic tile floor cleaning program					\$ 54,000	3		
106	Tomlinson Middle School	Auditorium seat replacement project					\$ 324,000	3		
107	Tomlinson Middle School	New ceiling - PE Office and storage					\$ 5,940	3		

May 11, 2023\$ 652,216 \$ 359,840 \$ 1,013,611 \$ 1,103,376 \$ 1,553,026

June 13, 2023 update\$ 51,994 \$ 649,840

June 23, 2023 update\$ 46,571

Total\$ 1,065,605 \$ 1,799,787

--

DistrictwideSecurity Project\$ 355,370

*Numbers dd not change - pending final billing