



Fairfield Public Schools

Enclosure No. 1
September 12, 2023

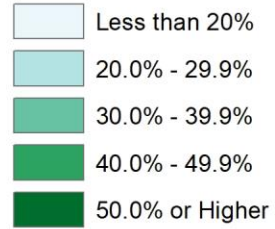
Redistricting Scenarios 4F and 4G

September 12, 2023

Fairfield "Planning Blocks" K-5 Enrollment, by Percent Minority Students: 2022-23

 School Points

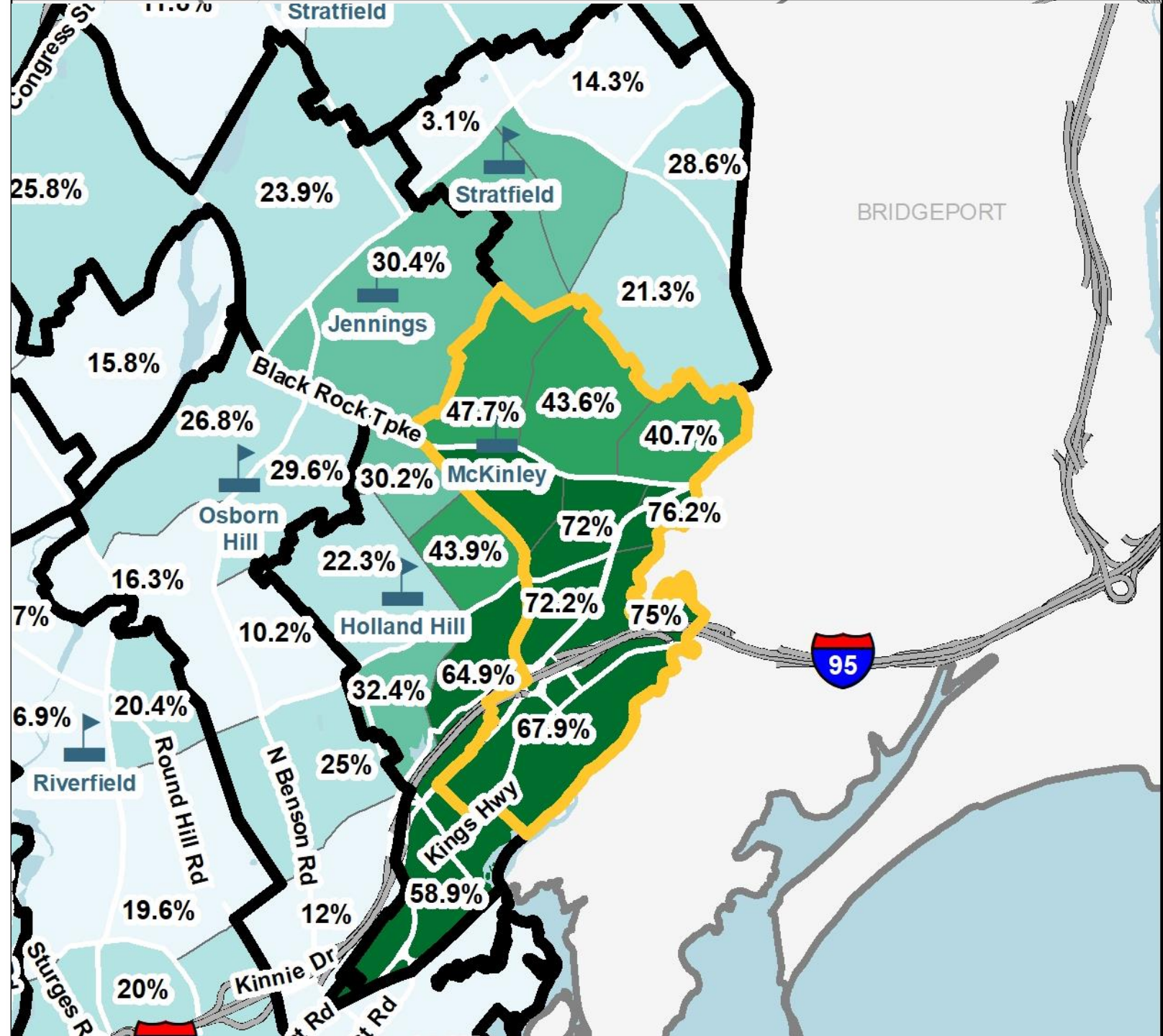
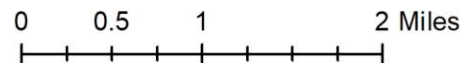
Percent Minority



Calculated based on PSIS Information provided by Fairfield Public Schools

**K-5 Districtwide Average
Percent Minority 2022-23: 26.7%**

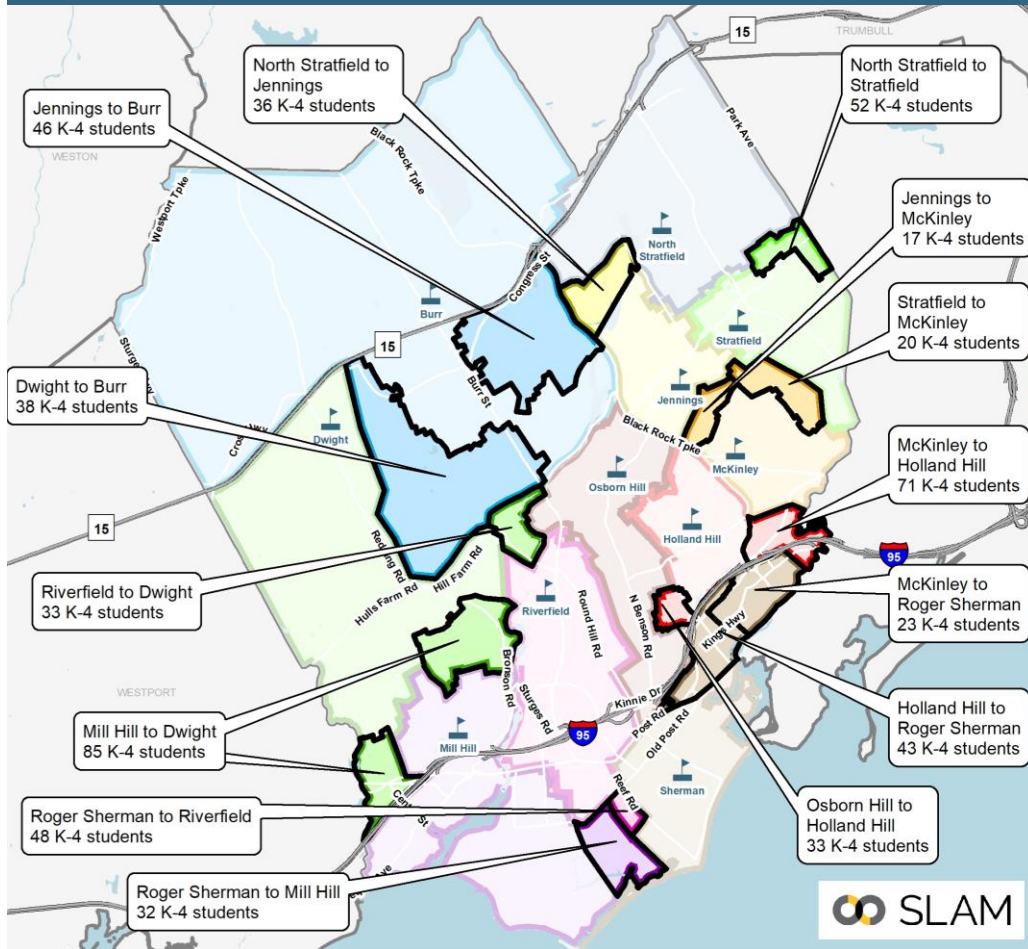
**No school can exceed
51.7% minority students**



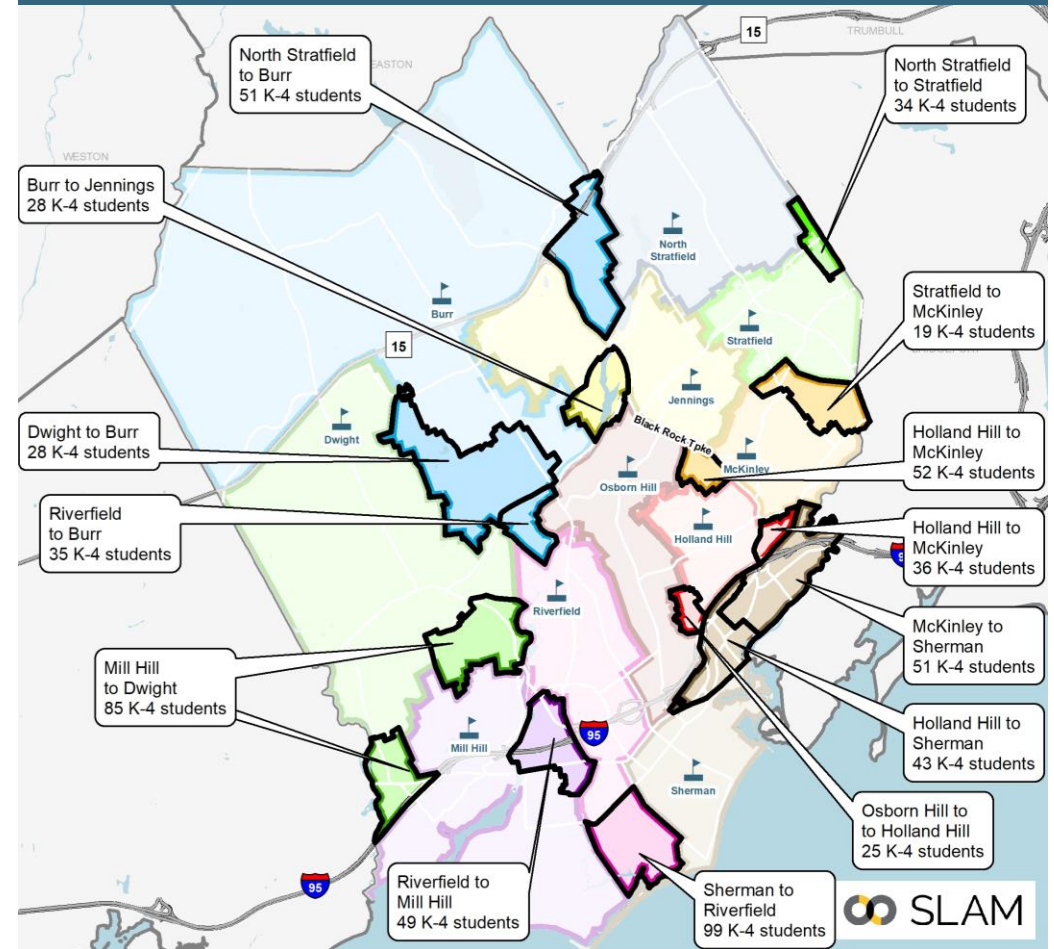


Scenario 4F and 4G Comparison

Scenario 4F: ECC at Jennings and North Stratfield



Scenario 4G: ECC at Holland Hill and North Stratfield



Note that Scenarios 4C through 4E were draft scenarios that were tested at a high level that were refined into Scenario 4F and 4G



Scenario 4F

- Traditional redistricting with all 11 elementary schools remaining open
- Prioritize racial balance – strive for within 21% of districtwide average at all schools
- **ECC placed in Jennings and North Stratfield**
- CLC shifted from Jennings to Stratfield
- K-5 students shifted out of Jennings and North Stratfield to accommodate the ECC

Scenario 4F Elementary Change Areas



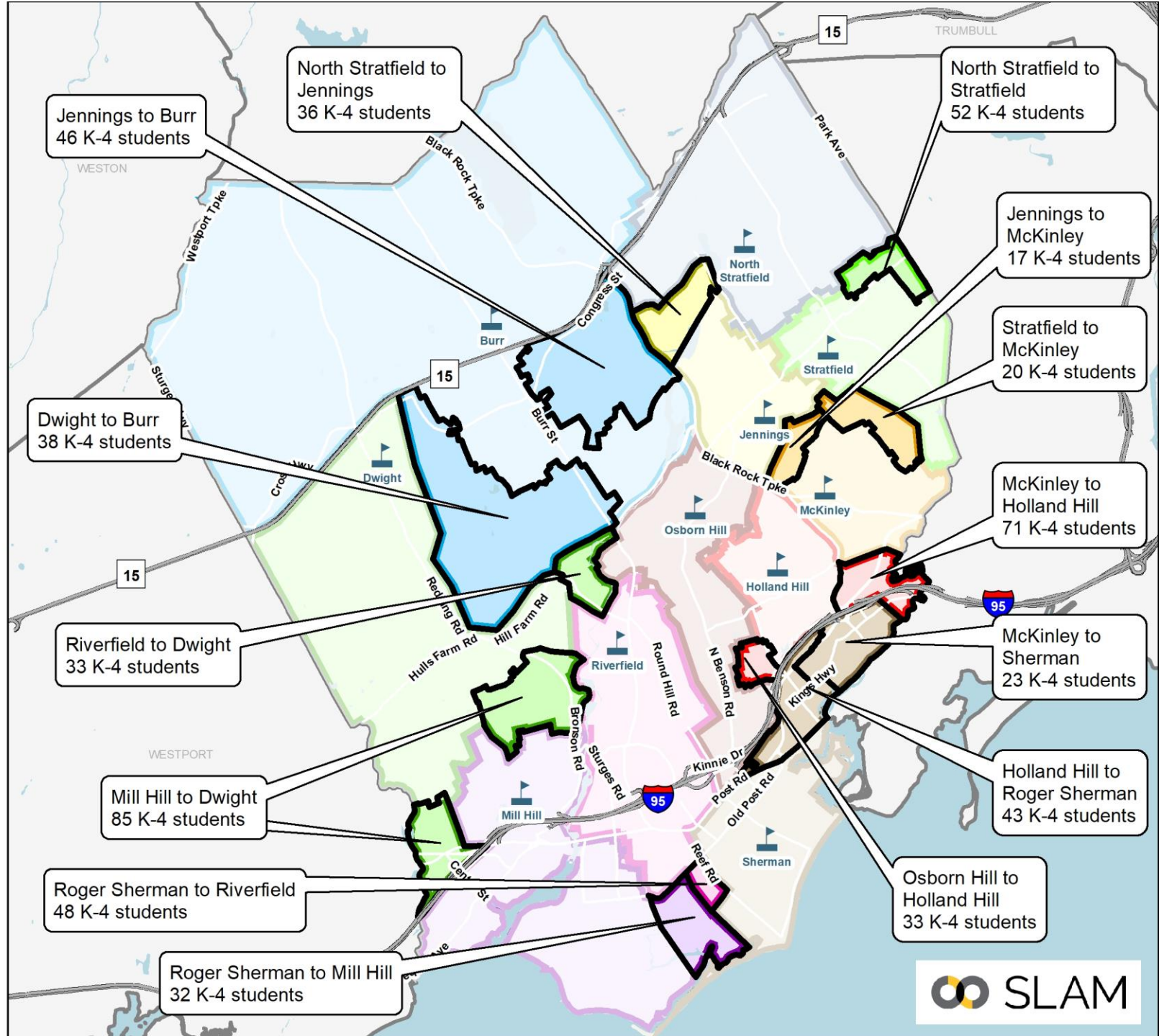
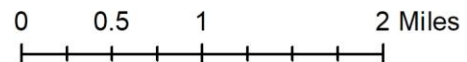
Redistricting Impacts (K-4):

- ~17% of elementary students

Greatest Share of Impacts to:

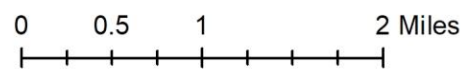
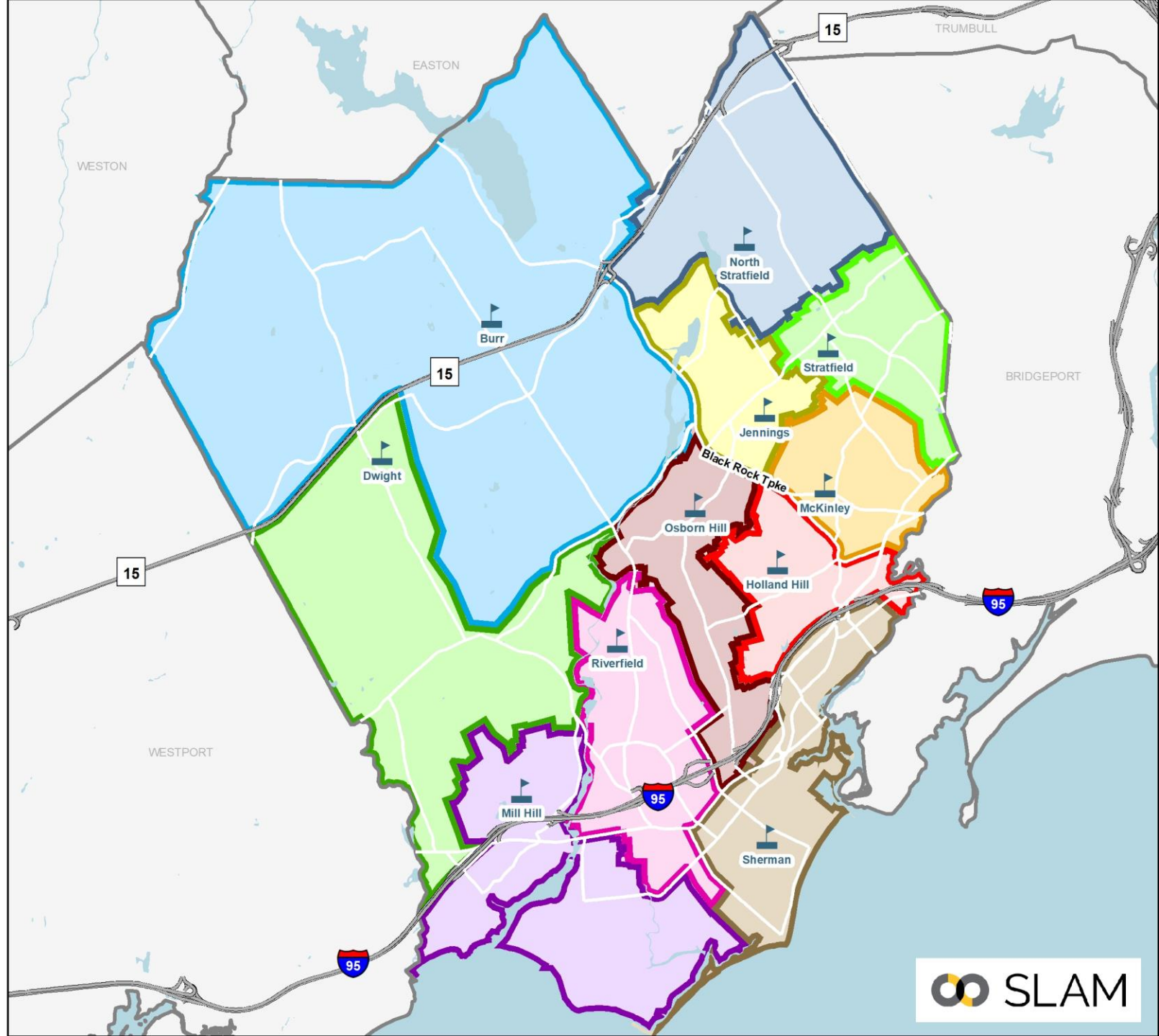
- McKinley: 16% of total impact
- Mill Hill: 14% of total impact
- N. Stratfield: 13% of total impact
- Sherman: 12% of total impact
- Jennings: 10% of total impact

Note: All students were returned to their zoned schools



Scenario 4F Elementary Districts

- | | |
|---|--|
|  Burr |  North Stratfield |
|  Dwight |  Osborn Hill |
|  Holland Hill |  Riverfield |
|  Jennings |  Roger Sherman |
|  McKinley |  Stratfield |
|  Mill Hill |  School Points |





Scenario 4F: Programs & Utilization

School	Capacity & Programs							Enrollment & Utilization (22-23)	
	Total Full-Sized CRs	K-5 Instruction	CLC	Early Literacy Academy	Therapeutic Learning Centers	ECC	K-5 Operational Capacity	Scenario 4F Enrollment	Scenario 4F Utilization
Burr	28	22	2	0	0	0	462	410	88.7%
Dwight	21	18	0	0	0	0	378	343	90.7%
Holland Hill	27	24	0	0	0	0	504	449	89.1%
Jennings	23	13	0	0	0	5	273	232	85.0%
McKinley	30	21	0	3	0	0	441	368	83.4%
Mill Hill	25	19	2	0	0	0	399	338	84.7%
North Stratfield	28	19	0	0	0	5	399	328	82.2%
Osborn Hill	30	22	2	0	0	0	462	395	85.5%
Riverfield	27	21	1	0	2	0	441	397	90.0%
Roger Sherman	25	22	0	0	0	0	462	388	84.0%
Stratfield	27	22	2	0	0	0	462	390	84.4%
Total All Schools	291	223	9	3	2	10	4,683	4,038	86.2%

- ECC space at Jennings and North Stratfield (4 classrooms + 1 support space each)
- CLC shifts from Jennings to Stratfield
- ELA program remains at McKinley



Scenario 4F: Racial Balance

- All schools in compliance with state racial balance law.
- McKinley would have deviated from the districtwide average by an average of 20.7%, ranging from 19.8% to 21.6% over the last seven years.
- Holland Hill would have been impending imbalance each of the last seven years by an average of 18.6%, ranging from 17.3% to 20.3%.

Scenario 4F Racial Balance: 7-Year Look Back

School	2016-17	2017-18	2018-19	2019-20	2020-21	2021-22	2022-23	7-Yr Avg
Burr	14.5%	16.1%	16.3%	18.3%	19.9%	21.6%	22.2%	18.4%
% Deviation	-9.2%	-8.7%	-9.4%	-7.3%	-6.6%	-4.7%	-4.5%	-7.2%
Dwight	16.9%	17.5%	19.1%	17.9%	19.6%	18.6%	17.8%	18.2%
% Deviation	-6.9%	-7.3%	-6.6%	-7.7%	-6.8%	-7.7%	-8.9%	-7.4%
Holland Hill	42.9%	42.1%	43.5%	44.7%	45.1%	46.6%	44.8%	44.2%
% Deviation	19.1%	17.3%	17.9%	19.1%	18.7%	20.3%	18.0%	18.6%
Jennings	21.5%	26.2%	28.1%	27.6%	23.8%	19.9%	23.7%	24.4%
% Deviation	-2.2%	1.4%	2.4%	2.0%	-2.6%	-6.4%	-3.0%	-1.2%
McKinley	44.6%	44.6%	45.7%	45.5%	48.1%	47.5%	48.1%	46.3%
% Deviation	20.8%	19.8%	20.1%	19.8%	21.6%	21.3%	21.4%	20.7%
Mill Hill	17.0%	18.2%	17.5%	17.9%	19.2%	17.1%	18.3%	17.9%
% Deviation	-6.7%	-6.6%	-8.2%	-7.7%	-7.3%	-9.2%	-8.4%	-7.7%
North Stratfield	26.2%	24.6%	25.5%	24.2%	25.7%	26.5%	27.1%	25.7%
% Deviation	2.4%	-0.2%	-0.2%	-1.5%	-0.7%	0.3%	0.4%	0.1%
Osborn Hill	15.4%	18.7%	21.0%	20.5%	22.5%	20.4%	20.0%	19.8%
% Deviation	-8.3%	-6.1%	-4.7%	-5.1%	-4.0%	-5.9%	-6.7%	-5.8%
Riverfield	13.5%	14.3%	15.6%	15.9%	16.2%	18.2%	18.9%	16.1%
% Deviation	-10.2%	-10.5%	-10.1%	-9.8%	-10.3%	-8.0%	-7.8%	-9.5%
Roger Sherman	23.1%	25.5%	25.5%	22.3%	22.6%	24.3%	26.5%	24.3%
% Deviation	-0.7%	0.7%	-0.1%	-3.3%	-3.9%	-2.0%	-0.2%	-1.3%
Stratfield	23.1%	22.9%	21.6%	23.3%	23.0%	21.0%	22.1%	22.4%
% Deviation	-0.7%	-1.9%	-4.1%	-2.4%	-3.5%	-5.3%	-4.7%	-3.2%
K-5 Total	23.7%	24.8%	25.7%	25.6%	26.5%	26.3%	26.7%	25.6%

Impending Imbalance

Racially Imbalanced



Scenario 4F: Projected Utilization

School	22-23	23-24	24-25	25-26	26-27	27-28	28-29	29-30	30-31	31-32	32-33	1st 5 Year Avg	2nd 5 Year Avg
Burr	88.7%	90.7%	91.6%	90.9%	95.9%	96.1%	97.2%	98.3%	101.1%	101.9%	101.7%	93.0%	100.0%
Dwight	90.7%	89.7%	91.5%	91.8%	90.7%	90.2%	92.3%	92.9%	94.7%	96.0%	96.3%	90.8%	94.4%
Holland Hill	89.1%	92.1%	93.5%	93.3%	93.8%	95.2%	95.6%	97.0%	96.0%	98.0%	97.8%	93.6%	96.9%
Jennings	85.0%	85.3%	88.3%	87.5%	86.4%	86.4%	89.4%	90.1%	91.2%	92.7%	92.3%	86.8%	91.1%
McKinley	83.4%	87.5%	83.4%	84.8%	87.1%	87.1%	87.3%	88.2%	89.1%	90.2%	89.8%	86.0%	88.9%
Mill Hill	84.7%	85.0%	84.2%	85.2%	86.2%	87.0%	86.0%	87.5%	88.2%	89.5%	89.0%	85.5%	88.0%
North Stratfield	82.2%	83.5%	85.2%	83.7%	84.7%	84.2%	87.2%	88.2%	90.0%	90.5%	90.7%	84.3%	89.3%
Osborn Hill	85.5%	88.1%	89.8%	89.8%	92.2%	89.6%	87.9%	88.5%	89.8%	90.5%	90.3%	89.9%	89.4%
Riverfield	90.0%	91.2%	90.9%	92.1%	95.9%	93.2%	93.2%	93.7%	95.2%	96.4%	96.1%	92.7%	94.9%
Roger Sherman	84.0%	84.4%	84.6%	86.1%	85.3%	88.1%	90.9%	93.1%	94.2%	95.0%	94.8%	85.7%	93.6%
Stratfield	84.4%	86.4%	85.1%	84.6%	85.7%	86.1%	86.8%	87.7%	89.2%	89.8%	89.8%	85.6%	88.7%
Total	86.2%	87.8%	88.1%	88.3%	89.7%	89.6%	90.5%	91.5%	92.8%	93.8%	93.7%	88.7%	92.5%

Reminder that 100% utilization means the building is at its operational target of 21 students per available classroom. This represents 87.5% of the maximum capacity.

Greatest Confidence – 1st 5-yrs

- Overall utilization increases to about 94% of operational target by the 2031-32 school year.
- Over the next five years, all schools average +/-5% of districtwide utilization
 - Lowest utilization at North Stratfield, McKinley, Mill Hill, Roger Sherman, and Stratfield
 - Highest utilization at Burr, increasing to ~102% over the final years of the projections (note that this growth is due to approved future housing development in Burr).

Scenario 4F MS Boundaries

Scenario 4F MS

- Fairfield Woods
- Roger Ludlowe
- Tomlinson
- School Points
- Scenario 4F Change Areas
- Elementary Districts

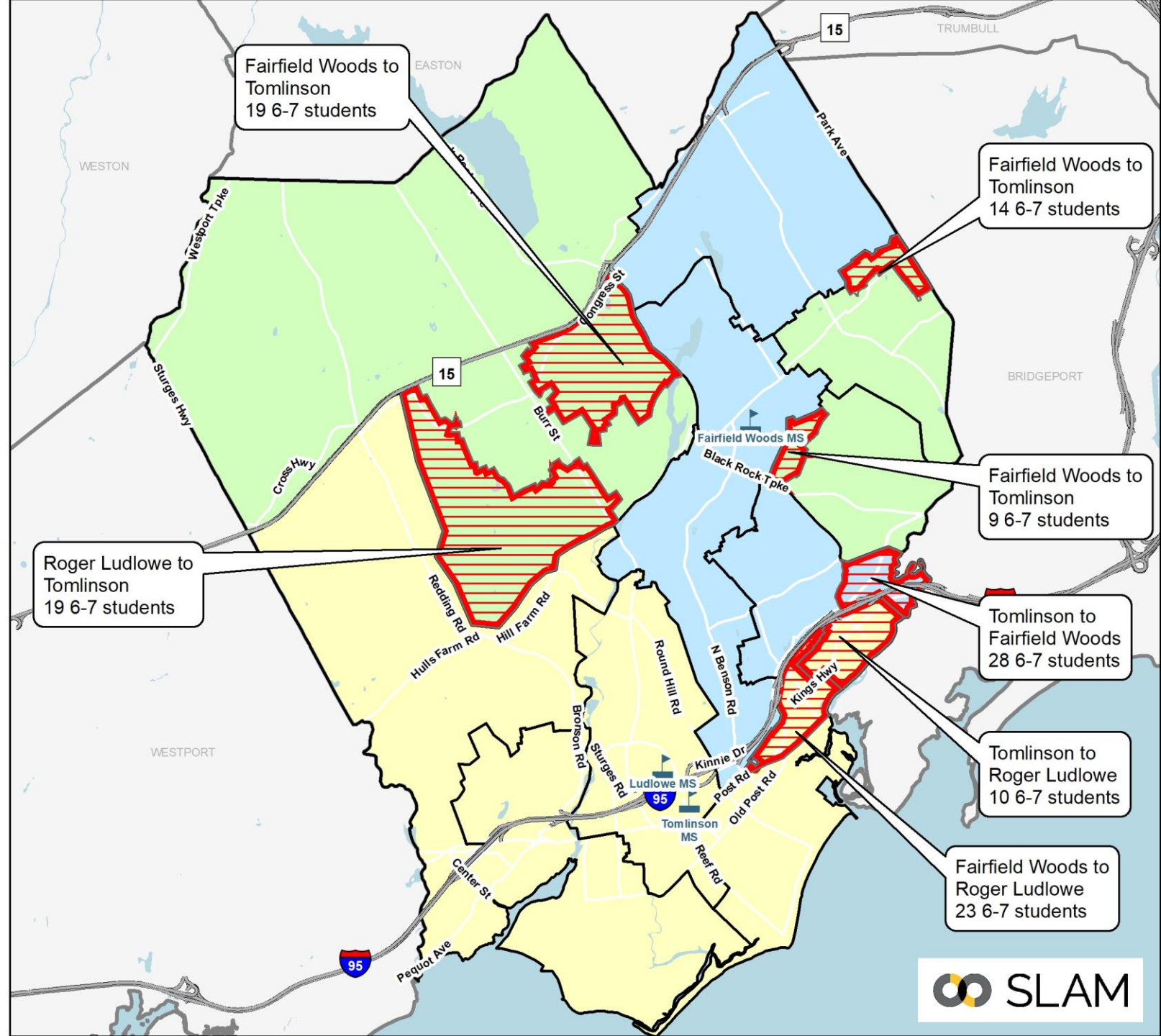
Maintains current feeder pattern based on modified elementary boundaries

Redistricting Impacts (6-7):

- About 7% of middle school students would be impacted,
- Impacts could be reduced with grandfathering

Note: All students were returned to their zoned schools

0 0.5 1 2 Miles



Scenario 4F HS Boundaries

Scenario 4F High School Boundaries

-  Fairfield Ludlowe
-  Fairfield Warde
-  School Points
-  HS Change Areas
-  Elementary Districts

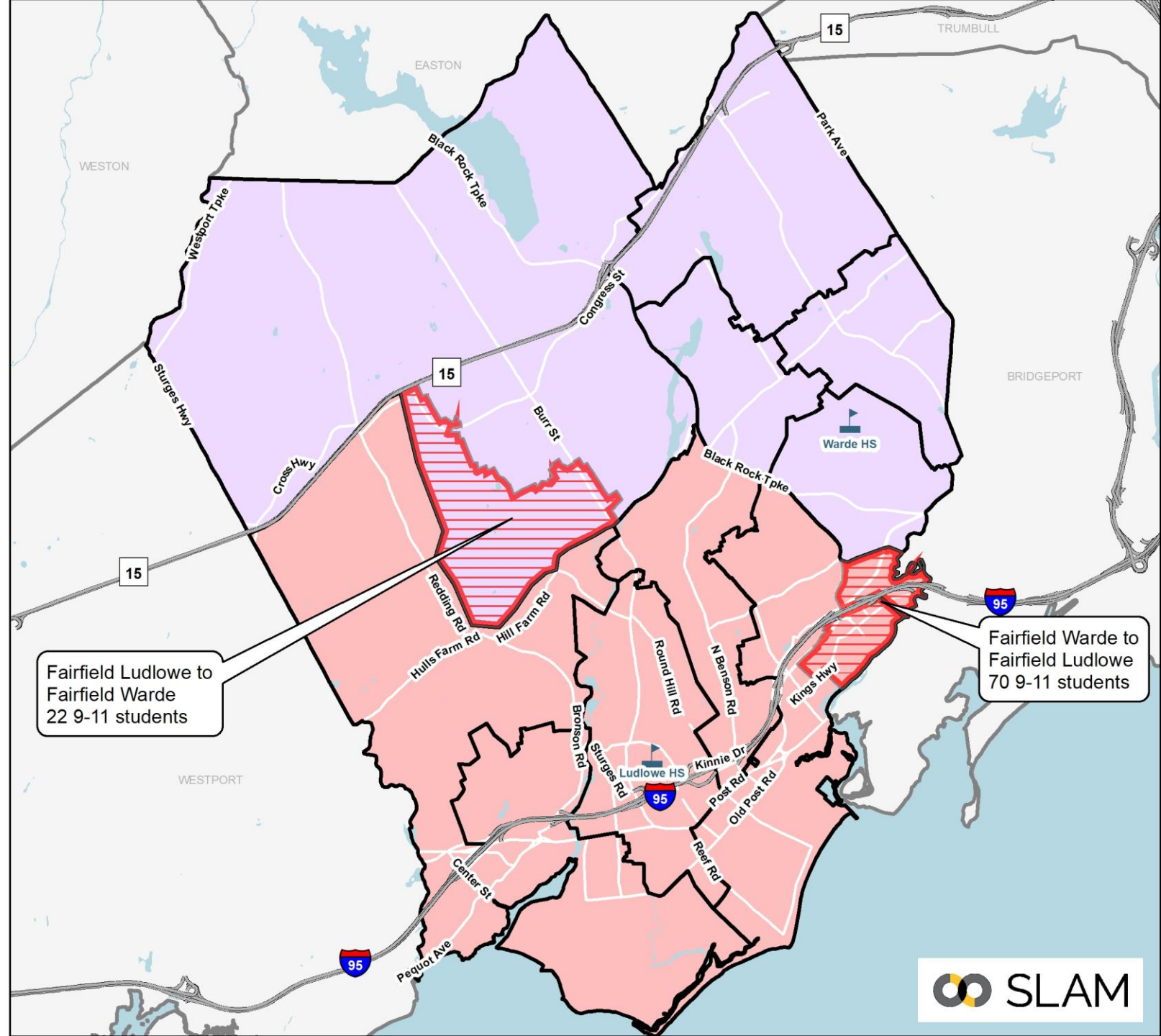
Maintains current feeder pattern based on modified elementary boundaries

Redistricting Impacts (9-11):

- About 4% of high school students would be impacted,
- Impacts could be reduced with grandfathering

Note: All students were returned to their zoned schools

0 0.5 1 2 Miles





Scenario 4F: Projected MS & HS Enrollment

Middle Projections by School (Medium)

MS School	22-23	23-24	24-25	25-26	26-27	27-28	28-29	29-30	30-31	31-32	32-33	5-year Δ	10-year Δ
Fairfield Woods	694	677	668	712	740	806	791	793	759	767	784	16.1%	13.0%
Roger Ludlowe	786	770	754	736	737	762	776	766	747	745	768	-3.1%	-2.3%
Tomlinson	653	611	610	603	618	614	611	630	621	621	635	-6.0%	-2.8%

High Projections by School (Medium)

HS School	22-23	23-24	24-25	25-26	26-27	27-28	28-29	29-30	30-31	31-32	32-33	5-year Δ	10-year Δ
Fairfield Warde	1,337	1,301	1,239	1,235	1,165	1,160	1,166	1,155	1,225	1,215	1,207	-13.2%	-9.7%
Fairfield Ludlowe	1,579	1,582	1,498	1,463	1,420	1,387	1,375	1,399	1,456	1,464	1,468	-12.2%	-7.0%
Alternative HS	66	66	66	66	66	66	66	66	66	66	66	0.0%	0.0%

- Shifts some students out of Fairfield Woods to Roger Ludlowe and Tomlinson.
 - Cohort sizes range from 230 to 275 at Fairfield Woods, ~240 to 270 at Roger Ludlowe, ~and ~200 to 230 at Tomlinson.
 - Large bubble class enters Fairfield Woods beginning in 2027-28.
- Fairfield Ludlowe would be the larger of the two high schools



Scenario 4G

- Traditional redistricting with all 11 elementary schools remaining open
- Prioritize racial balance – strive for within 21% of districtwide average at all schools
- **ECC placed in Holland Hill and North Stratfield**
- K-5 students shifted out of Holand Hill and North Stratfield to accommodate the ECC

Scenario 4G Elementary Change Areas



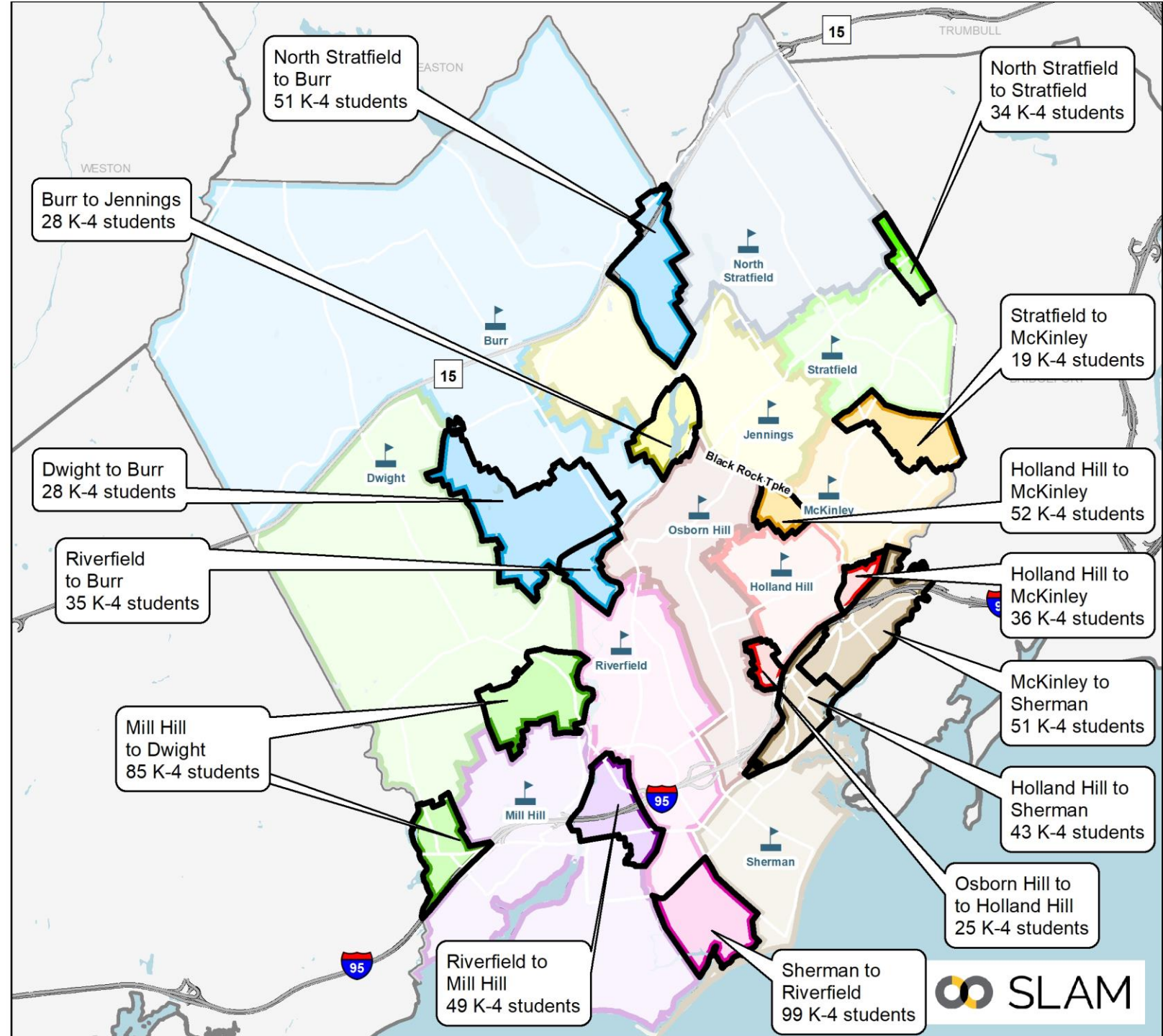
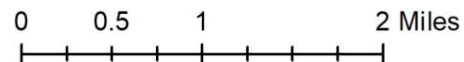
Redistricting Impacts (K-4):

- ~18% of elementary students

Greatest Share of Impacts to:

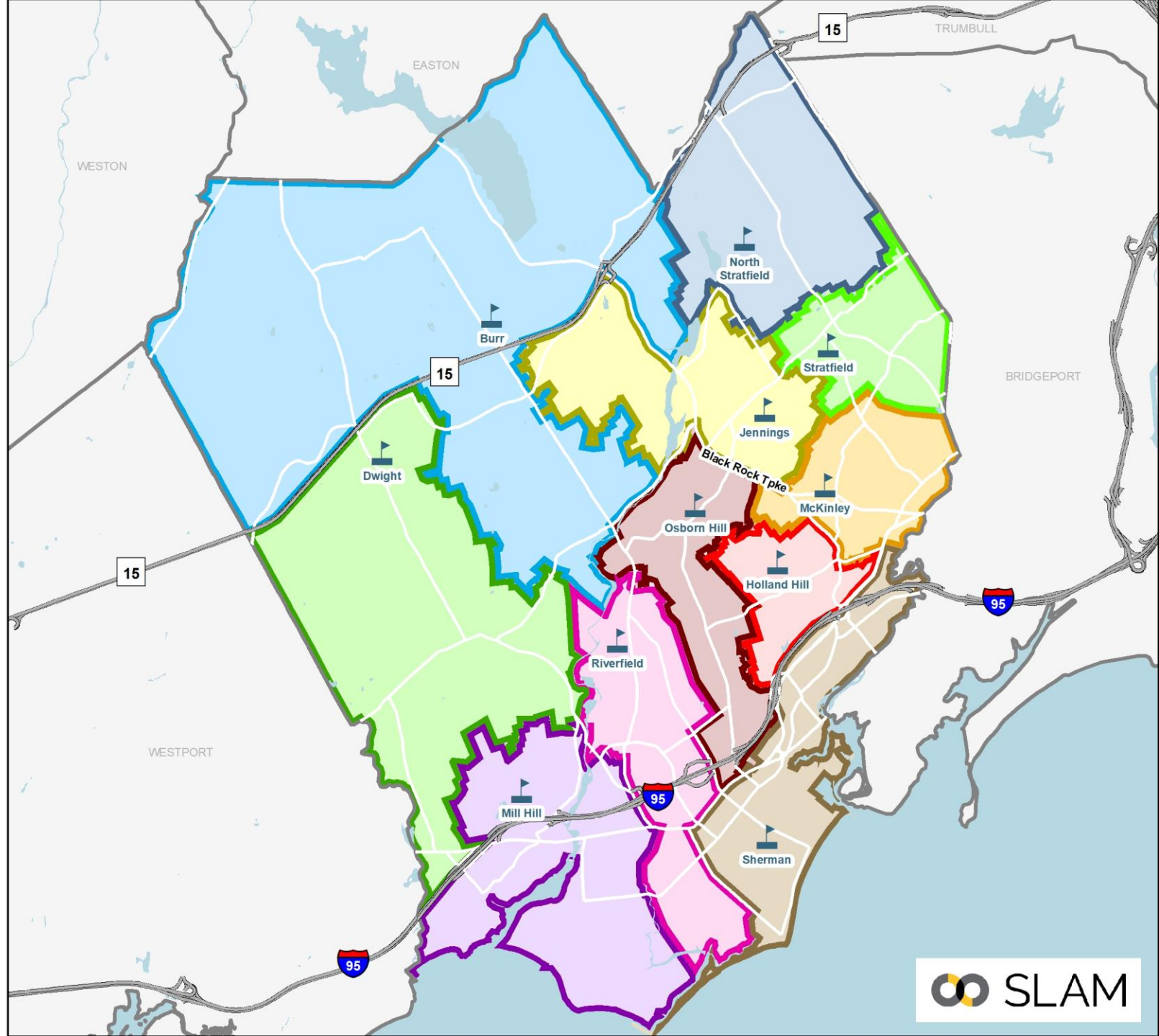
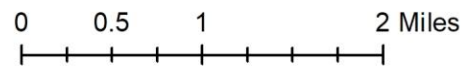
- McKinley: 14% of total impact
- Sherman: 14% of total impact
- Holland Hill: 13% of total impact
- Mill Hill: 13% of total impact
- N. Stratfield: 12% of total impact
- Riverfield: 12% of total impact

Note: All students were returned to their zoned schools



Scenario 4G Elementary Districts

- | | |
|---|--|
|  Burr |  North Stratfield |
|  Dwight |  Osborn Hill |
|  Holland Hill |  Riverfield |
|  Jennings |  Roger Sherman |
|  McKinley |  Stratfield |
|  Mill Hill |  School Points |





Scenario 4G: Programs & Utilization

School	Capacity & Programs							Enrollment & Utilization (22-23)	
	Total Full-Sized CRs	K-5 Instruction	CLC	Early Literacy Academy	Therapeutic Learning Centers	ECC	K-5 Operational Capacity	Scenario 4G Enrollment	Scenario 4G Utilization
Burr	28	22	2	0	0	0	462	420	90.9%
Dwight	21	18	0	0	0	0	378	314	83.1%
Holland Hill	27	19	0	0	0	5	399	336	84.2%
Jennings	23	16	2	0	0	0	336	296	88.1%
McKinley	30	24	0	0	0	0	504	420	83.3%
Mill Hill	25	19	2	0	0	0	399	356	89.2%
North Stratfield	28	19	0	0	0	5	399	324	81.2%
Osborn Hill	30	22	2	0	0	0	462	405	87.7%
Riverfield	27	21	1	0	2	0	441	404	91.6%
Roger Sherman	25	22	0	0	0	0	462	395	85.5%
Stratfield	27	21	0	3	0	0	441	368	83.4%
Total All Schools	291	223	9	3	2	10	4,683	4,038	86.2%

- ELA program shifts from McKinley to Stratfield.
- ECC space at Holland Hill and Jennings (4 classrooms + 1 support space each)



Scenario 4G: Racial Balance

- All schools in compliance with state racial balance law.
- McKinley would have deviated from the districtwide average by an average of 20.6%, ranging from 19.0% to 22.2% over the last seven years.
- Holland Hill would have been impending imbalance for the last five years, with deviation ranging from 13.3% to 19.4%.*

* Note that if ECC was located at Holland Hill, its racial balance numbers would include Pre-K and would be compared to the PK-5 district average.

Scenario 4G Racial Balance: 7-Year Look Back

School	2016-17	2017-18	2018-19	2019-20	2020-21	2021-22	2022-23	7-Yr Avg
Burr	12.7%	15.7%	15.4%	17.6%	17.4%	17.9%	18.6%	16.5%
% Deviation	-11.0%	-9.1%	-10.3%	-8.1%	-9.1%	-8.4%	-8.1%	-9.2%
Dwight	18.3%	16.9%	19.6%	18.3%	20.7%	20.1%	19.4%	19.0%
% Deviation	-5.4%	-7.9%	-6.1%	-7.3%	-5.8%	-6.1%	-7.3%	-6.6%
Holland Hill	37.0%	38.8%	42.1%	43.6%	44.7%	45.7%	44.3%	42.3%
% Deviation	13.3%	14.0%	16.4%	17.9%	18.2%	19.4%	17.6%	16.7%
Jennings	20.7%	25.4%	25.5%	26.9%	26.4%	25.0%	28.0%	25.4%
% Deviation	-3.0%	0.6%	-0.1%	1.3%	-0.1%	-1.3%	1.3%	-0.2%
McKinley	45.7%	43.8%	45.0%	45.1%	48.1%	48.4%	47.4%	46.2%
% Deviation	22.0%	19.0%	19.3%	19.5%	21.6%	22.2%	20.7%	20.6%
Mill Hill	17.8%	19.1%	18.8%	19.9%	20.5%	19.2%	18.8%	19.2%
% Deviation	-5.9%	-5.7%	-6.9%	-5.7%	-6.0%	-7.0%	-7.9%	-6.4%
North Stratfield	26.6%	25.5%	26.7%	24.5%	25.5%	26.3%	25.3%	25.8%
% Deviation	2.9%	0.7%	1.0%	-1.2%	-0.9%	0.1%	-1.4%	0.2%
Osborn Hill	15.6%	18.7%	20.1%	20.1%	22.1%	20.3%	20.2%	19.6%
% Deviation	-8.1%	-6.1%	-5.6%	-5.5%	-4.4%	-6.0%	-6.5%	-6.0%
Riverfield	13.4%	13.8%	14.7%	13.6%	14.6%	15.8%	18.8%	15.0%
% Deviation	-10.4%	-11.0%	-11.0%	-12.0%	-11.8%	-10.5%	-7.9%	-10.7%
Roger Sherman	29.0%	32.0%	31.4%	28.6%	27.2%	29.2%	30.6%	29.7%
% Deviation	5.3%	7.2%	5.8%	2.9%	0.7%	2.9%	3.9%	4.1%
Stratfield	23.7%	22.9%	21.9%	22.5%	22.0%	20.2%	22.0%	22.2%
% Deviation	0.0%	-1.9%	-3.8%	-3.1%	-4.5%	-6.1%	-4.7%	-3.4%
K-5 Total	23.7%	24.8%	25.7%	25.6%	26.5%	26.3%	26.7%	25.6%

Impending Imbalance

Racially Imbalanced



Scenario 4G: Projected Utilization

School	22-23	23-24	24-25	25-26	26-27	27-28	28-29	29-30	30-31	31-32	32-33	1st 5 Year Avg	2nd 5 Year Avg
Burr	90.9%	92.0%	94.4%	93.3%	96.5%	95.2%	98.9%	100.2%	103.0%	103.7%	103.7%	94.3%	101.9%
Dwight	83.1%	83.1%	84.7%	84.7%	84.9%	84.4%	86.0%	86.8%	87.3%	88.9%	89.2%	84.3%	87.6%
Holland Hill	84.2%	85.2%	86.5%	87.7%	90.0%	90.2%	90.0%	91.0%	92.2%	93.0%	93.0%	87.9%	91.8%
Jennings	88.1%	89.0%	89.3%	87.8%	89.3%	90.8%	92.0%	93.2%	93.5%	94.6%	94.3%	89.2%	93.5%
McKinley	83.3%	87.5%	86.1%	86.5%	88.5%	89.7%	88.7%	89.1%	90.1%	91.3%	90.3%	87.7%	89.9%
Mill Hill	89.2%	90.0%	88.7%	89.2%	90.2%	90.5%	91.0%	92.0%	93.0%	94.2%	94.2%	89.7%	92.9%
North Stratfield	81.2%	83.5%	84.0%	84.2%	85.2%	84.7%	86.0%	86.7%	87.7%	89.0%	88.7%	84.3%	87.6%
Osborn Hill	87.7%	90.0%	92.0%	92.0%	93.5%	90.9%	90.3%	90.9%	92.2%	92.9%	92.6%	91.7%	91.8%
Riverfield	91.6%	92.5%	93.4%	94.1%	97.7%	95.9%	94.8%	95.7%	96.8%	98.0%	98.2%	94.7%	96.7%
Roger Sherman	85.5%	86.6%	84.8%	86.4%	84.6%	87.0%	90.0%	92.4%	93.9%	95.2%	94.8%	85.9%	93.3%
Stratfield	83.4%	85.3%	84.4%	84.1%	84.8%	85.7%	87.1%	88.2%	89.3%	90.2%	90.2%	84.9%	89.0%
Total	86.2%	87.8%	88.1%	88.3%	89.7%	89.6%	90.5%	91.5%	92.8%	93.8%	93.7%	88.7%	92.5%

Greatest Confidence – 1st 5-yrs

Reminder that 100% utilization means the building is at its operational target of 21 students per available classroom. This represents 87.5% of the maximum capacity.

- Overall utilization increases to about 94% of operational target by the 2031-32 school year.
- Over the next five years, all schools average +/-7% of districtwide utilization
 - Lowest utilization at Dwight, North Stratfield, and Stratfield
 - Highest utilization at Burr, increasing to ~103% over the final years of the projections (note that this growth is due to approved future housing development in Burr).

Scenario 4G MS Boundaries

Scenario 4G MS

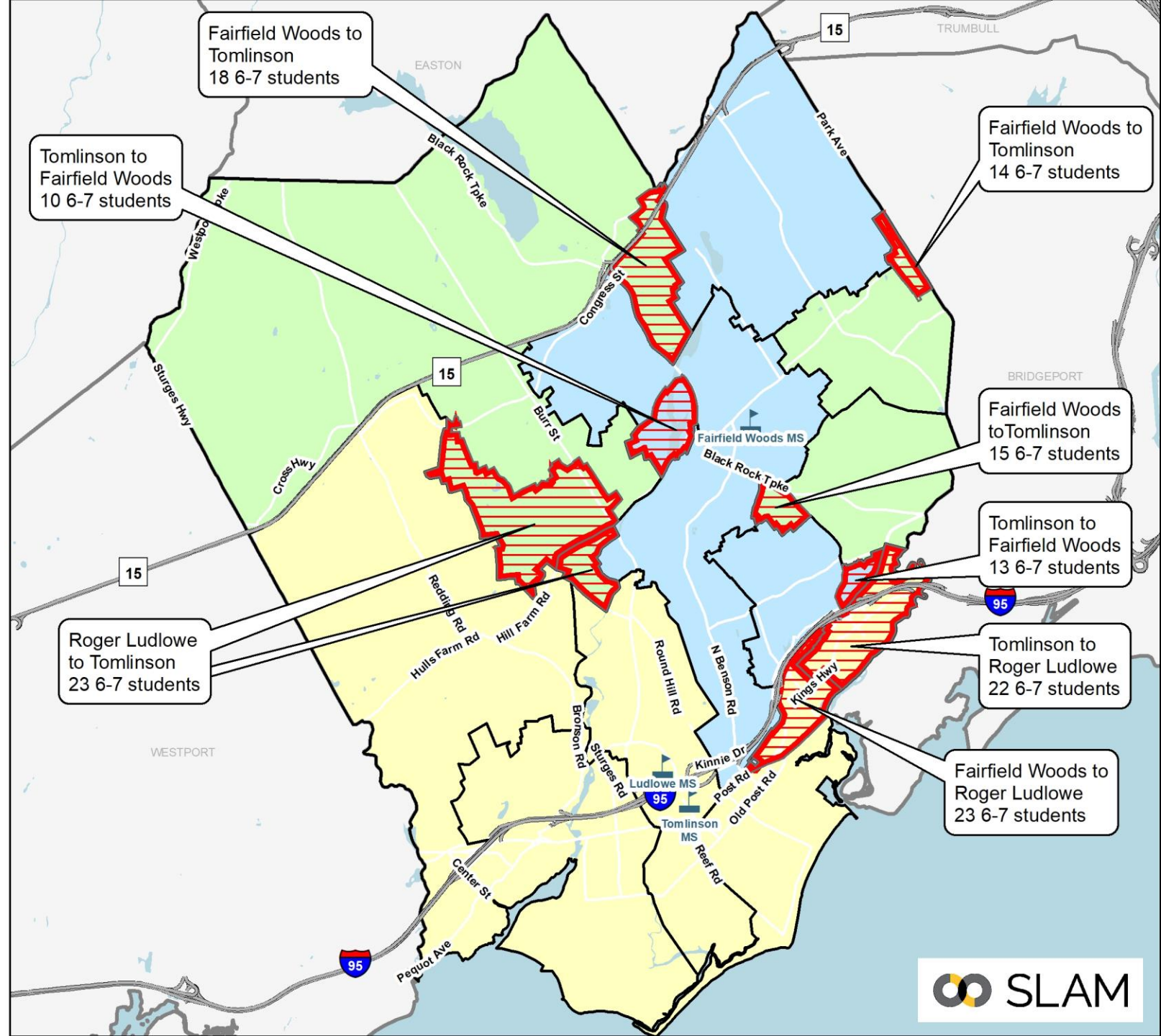
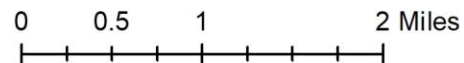


Maintains current feeder pattern based on modified elementary boundaries

Redistricting Impacts (6-7):

- About 7% of middle school students would be impacted.
- Impacts could be reduced with grandfathering

Note: All students were returned to their zoned schools



Scenario 4G HS Boundaries

Scenario 4G High School Boundaries

-  Fairfield Ludlowe
-  Fairfield Warde
-  School Points
-  HS Change Areas
-  Elementary Districts

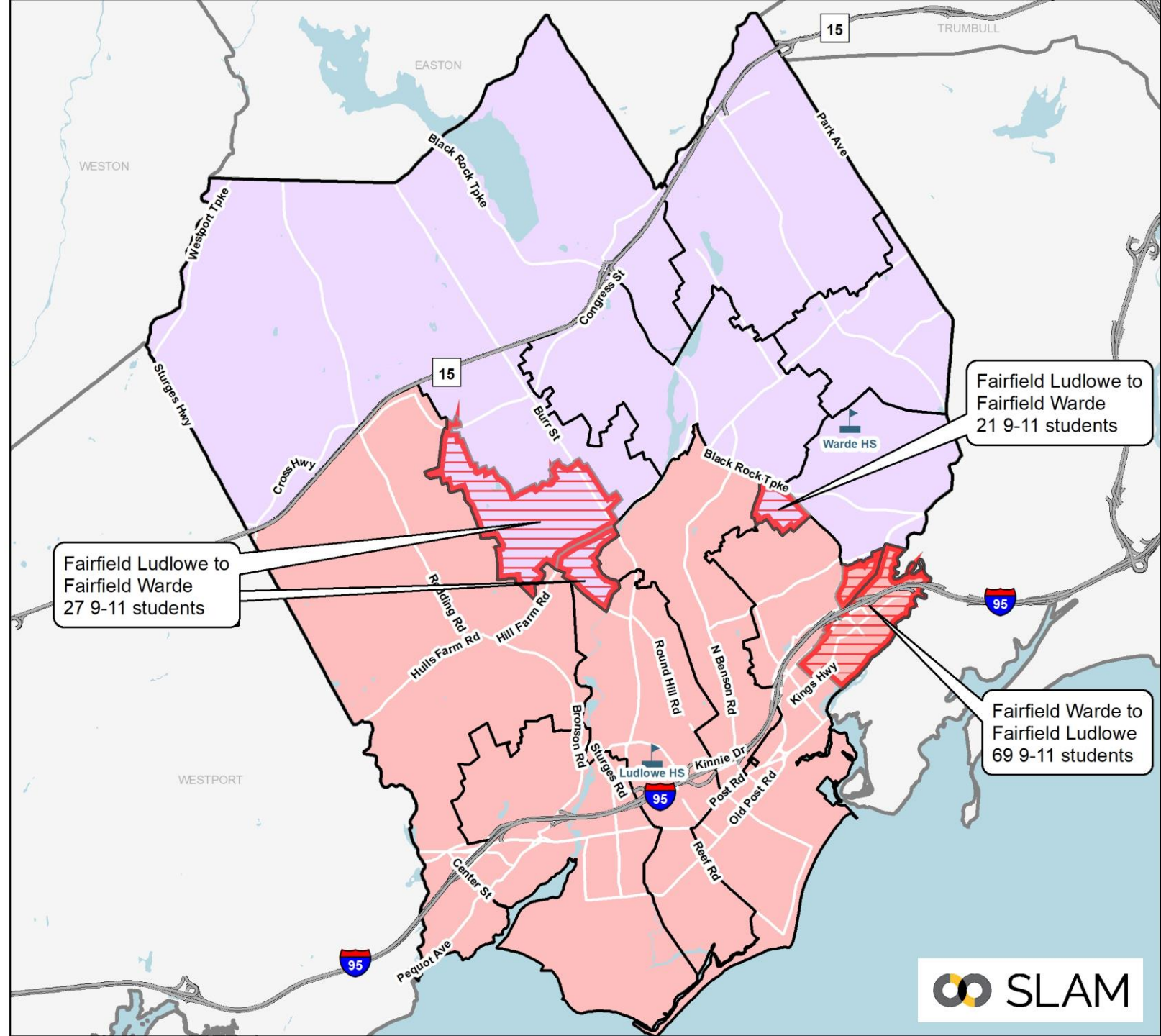
Maintains current feeder pattern based on modified elementary boundaries

Redistricting Impacts (9-11):

- About 5% of high school students would be impacted,
- Impacts could be reduced with grandfathering

Note: All students were returned to their zoned schools

0 0.5 1 2 Miles





Scenario 4G: Projected MS & HS Enrollment

Middle Projections by School (Medium)

MS School	22-23	23-24	24-25	25-26	26-27	27-28	28-29	29-30	30-31	31-32	32-33	5-year Δ	10-year Δ
Fairfield Woods	676	658	658	692	707	753	749	759	728	732	749	11.4%	10.8%
Roger Ludlowe	805	777	758	736	744	768	782	770	752	749	772	-4.6%	-4.1%
Tomlinson	652	623	616	623	644	661	647	660	647	652	666	1.4%	2.1%

High Projections by School (Medium)

HS School	22-23	23-24	24-25	25-26	26-27	27-28	28-29	29-30	30-31	31-32	32-33	5-year Δ	10-year Δ
Fairfield Warde	1,381	1,337	1,277	1,276	1,209	1,204	1,219	1,218	1,293	1,290	1,278	-12.8%	-7.5%
Fairfield Ludlowe	1,535	1,546	1,460	1,422	1,376	1,343	1,322	1,336	1,388	1,389	1,397	-12.5%	-9.0%
Alternative HS	66	66	66	66	66	66	66	66	66	66	66	0.0%	0.0%

- Shifts some students out of Fairfield Woods to Roger Ludlowe and Tomlinson.
 - Cohort sizes range from 230 to 275 at Fairfield Woods, ~240 to 270 at Roger Ludlowe, ~and ~200 to 230 at Tomlinson.
 - Large bubble class enters Fairfield Woods beginning in 2027-28.
- Fairfield Ludlowe would be the larger of the two high schools



Scenario 4F and 4G: Considerations

Objective	Scenario 4F	Scenario 4G
Scenario Description	Traditional Redistricting ECC at <u>Jennings</u> and North Stratfield CLC shifts from Jennings to Stratfield ELA at McKinley	Traditional Redistricting ECC at <u>Holland Hill</u> and North Stratfield No CLC shifts ELA at Stratfield
Address Racial Imbalance	McKinley averages 20.7% imbalance Holland Hill averages 18.6% imbalance	McKinley averages 20.6% imbalance Holland Hill averages 16.7% imbalance
Balance Utilization Across all Elementary Schools	All schools within 5% of districtwide average	All schools within 10% of districtwide average
Minimize Redistricting Impacts	17% of elementary students	18% of elementary students
Student Walker Impacts	5% of elementary walkers impacted	5% of elementary walkers impacted
Secondary School Impacts	No changes to MS feeder No changes to HS feeder 7% of MS students impacted 4% of HS students impacted	No changes to MS feeder No changes to HS feeder 7% of MS students impacted 5% of HS students impacted