



**BOE/CO  
Friday Packet  
July 1, 2022**

Upcoming Meeting Dates

FPS 10-Year Enrollement Projections, Updated by SLAM 6-28-2022



Upcoming Board of Education Meeting Dates **2022**

<b>August 30</b>	<b>5:00 PM</b>	Policy Committee Special Meeting Superintendent Conference Room 501 Kings Hwy East
<b>August 30</b>	<b>7:30 PM</b>	Regular Meeting CO Board Room 501 Kings Hwy East
<b>September 6</b>	<b>5:00 PM</b>	Policy Committee Meeting Superintendent Conference Room 501 Kings Hwy East
<b>September 7</b>	<b>3:30 PM</b>	Finance Committee Meeting Superintendent Conference Room 501 Kings Hwy East
<b>September 13</b>	<b>7:30 PM</b>	Regular Meeting CO Board Room 501 Kings Hwy East
<b>September 20</b>	<b>5:00 PM</b>	Policy Committee Meeting Superintendent Conference Room 501 Kings Hwy East
<b>September 21</b>	<b>2:30 PM</b>	Facilities Committee Meeting Superintendent Conference Room 501 Kings Hwy East



## 10-Year Enrollment Projection (Update)

June 28, 2022



# Contents

- Projections Review
- Enrollment Drivers – Demographics and Housing
- Enrollment Trends & Analysis
- 10 Year Enrollment Projections
- Appendix A – Low, Med, High Districtwide Projections
- Appendix B – By school and grade projections (medium model)



# Projections Comparison

Medium Comparison	K	1	2	3	4	5	6	7	8	9	10	11	12	PK	K-5th	6th-8th	9th-12th	K-12th	PK-12th
<b>2021-22 Proj. (Med.)</b>	674	654	689	667	664	708	712	736	807	702	823	740	757	170	4,056	2,255	3,022	9,333	9,503
<b>2021-22 Actual</b>	699	633	661	651	645	678	701	716	805	686	820	726	747	147	3,967	2,222	2,979	9,168	9,315
<b>Deviation</b>	25	-21	-28	-16	-19	-30	-11	-20	-2	-16	-3	-14	-10	-23	-89	-33	-43	-165	-188
<b>% Diff.</b>	3.7%	-3.2%	-4.1%	-2.4%	-2.9%	-4.2%	-1.5%	-2.7%	-0.2%	-2.3%	-0.4%	-1.9%	-1.3%	-13.5%	-2.2%	-1.5%	-1.4%	-1.8%	-2.0%

- Projections prepared in Fall of 2019 were compared to 2021-22 actual enrollment to assess performance of projection model
- Over the past year, projections have faired well. K-12 actual enrollments are 165 students lower than projected (-1.8%)
- Elementary enrollment was 89 students lower than projected with greatest deviation at Stratfield (-42), Burr (-32), Riverfield (-31) McKinley (-28) and North Stratfield (+29)
- Middle school enrollment was 33 students lower than projected, with greatest deviation at Tomlinson (-24)
- High school deviated by 43 students with greatest difference at Fairfield Warde (-39)

Elementary School	K-5 Actual Enrollment	K-5 Projected Enrollment	Difference
Burr	339	371	-32
Dwight	255	257	-2
Holland Hill	360	334	26
Jennings	259	275	-16
McKinley	441	469	-28
Mill Hill	368	358	10
North Stratfield	413	384	29
Osborn Hill	409	410	-1
Riverfield	375	406	-31
Roger Sherman	402	413	-11
Stratfield	337	379	-42

Middle School	6-8 Actual Enrollment	6-8 Projected Enrollment	Difference
Fairfield Woods	802	809	-7
Roger Ludlowe	807	809	-2
Tomlinson	613	637	-24

High School	9-12 Actual Enrollment	9-12 Projected Enrollment	Difference
Fairfield Warde	1,398	1,437	-39
Fairfield Ludlowe	1,529	1,538	-9



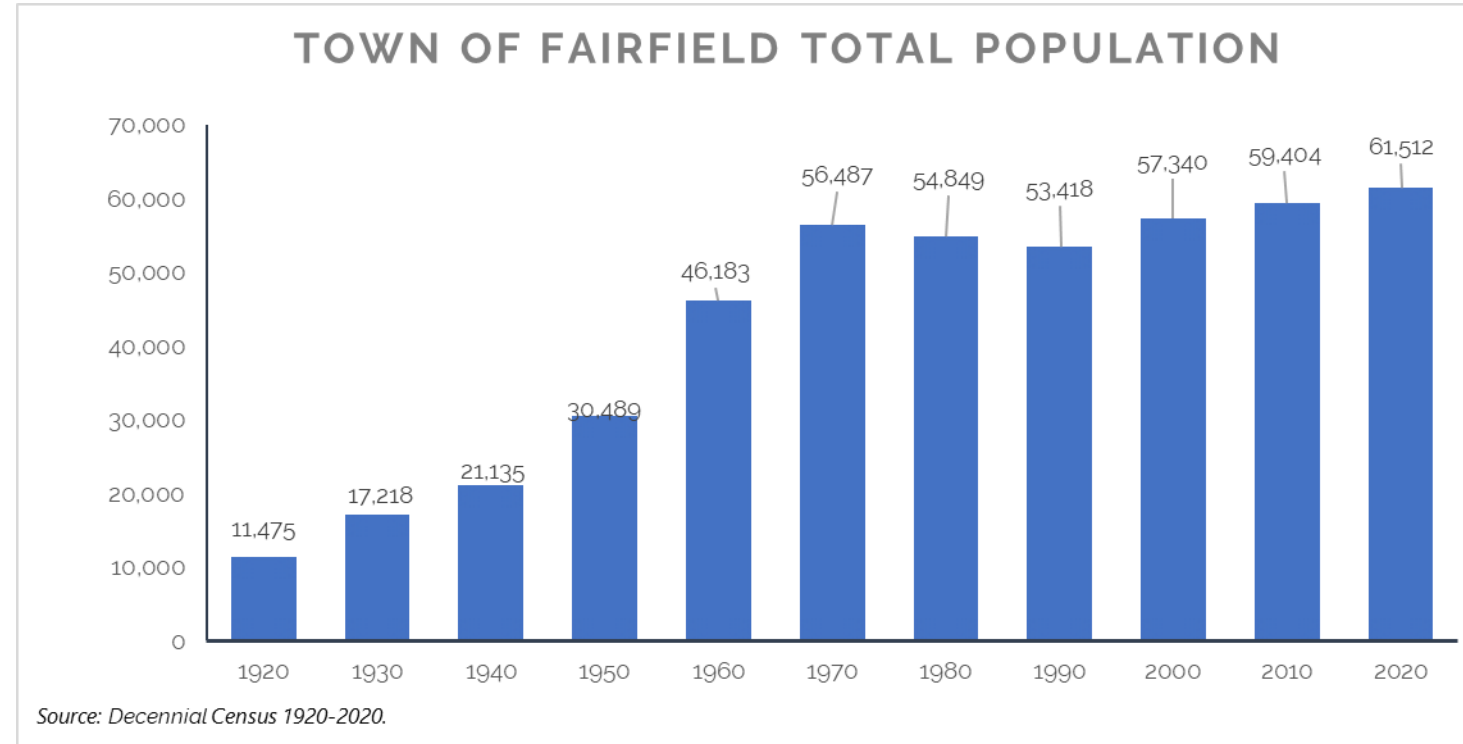
# Enrollment Drivers

## Enrollment Drivers



# Fairfield's Population

- According to 2020 Decennial Census, Fairfield's total population grew by 2,108 or 3.5% over the last decade
- Impacts from the pandemic over the last 18 months not captured in 2020 census counts
- Reliable total population projections using the 2020 census data have yet to be published

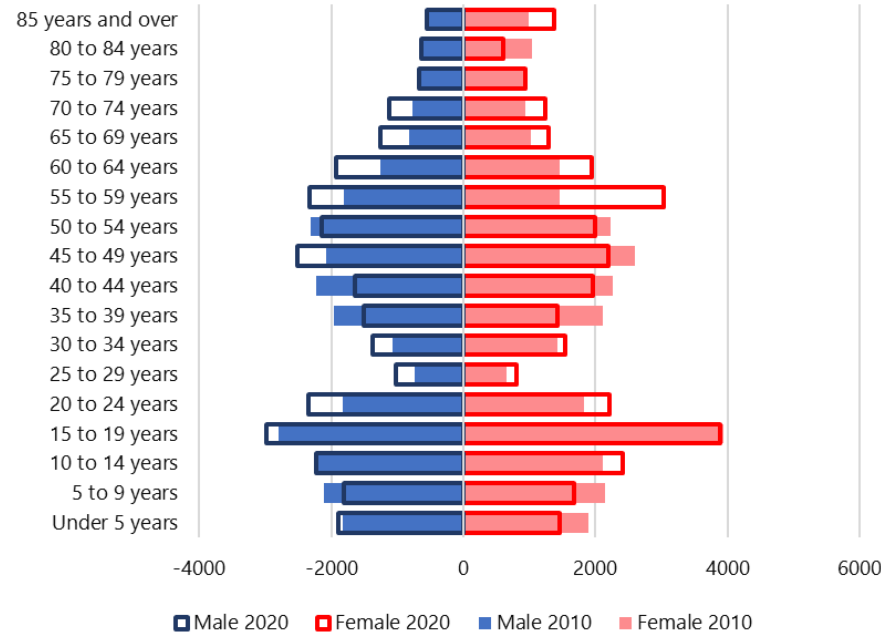




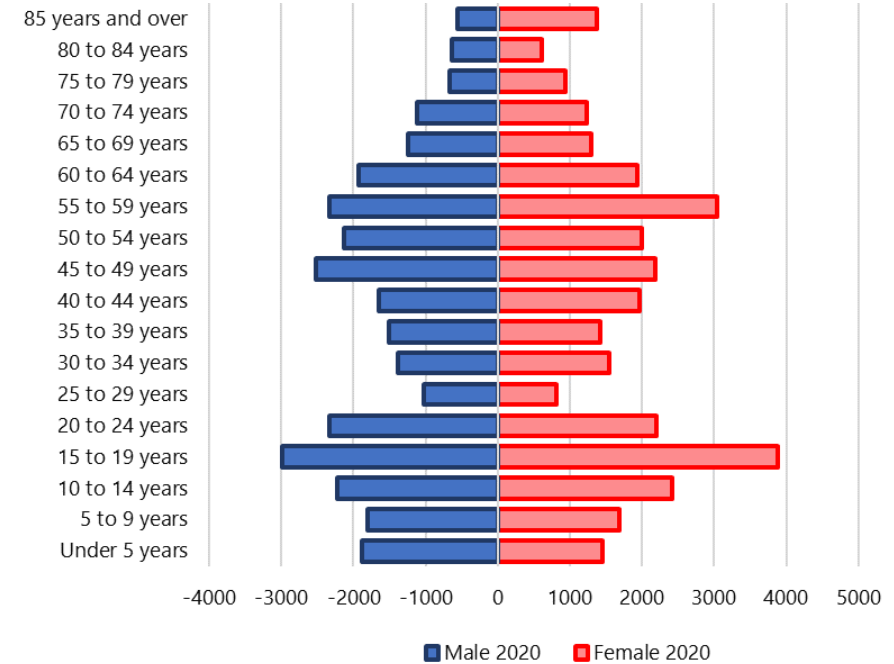
# Fairfield's Population

- Between 2010 and 2020, Fairfield's median age increased from 38.4 to 40.7 years old
- Over the last decade, the greatest growth was in cohorts 55-64 years old, and a decline in cohorts 35-44 years
- Over the last decade, there has been modest growth in cohort 20-34 years of age

Population Change by Age and Sex,  
2010 to 2020



Population by Age and Sex, 2020

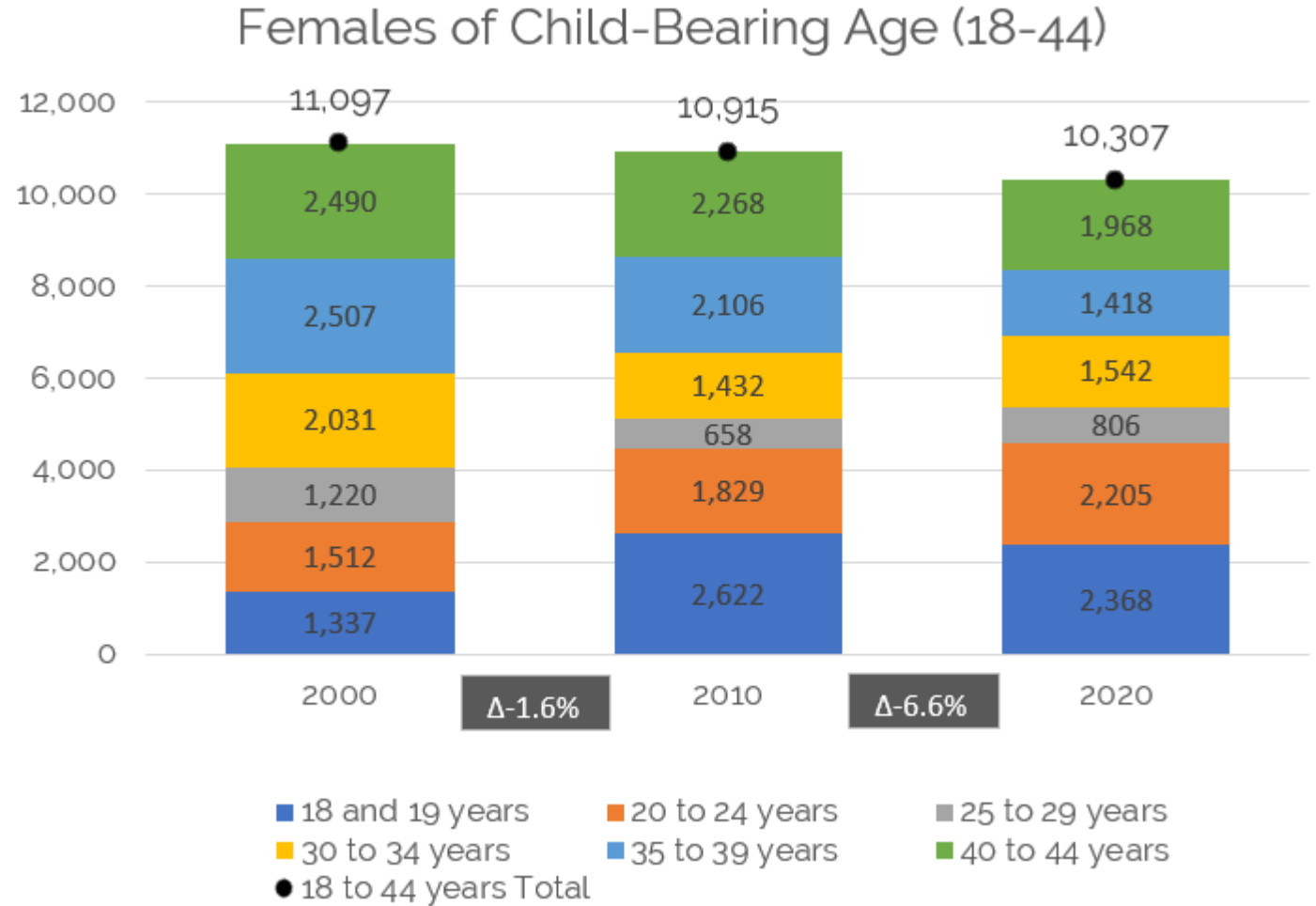






# Females of Child-Bearing Age

- Females of Child-Bearing Age (FCBA) has declined by 6.6% over the last 10 years with the most significant decline in the 35-39 and 40-44-year-old cohorts.
- Within the FBCA cohorts, growth was experienced across the younger cohorts, specifically the 20-24-, 25-29- and 30-34 year-olds



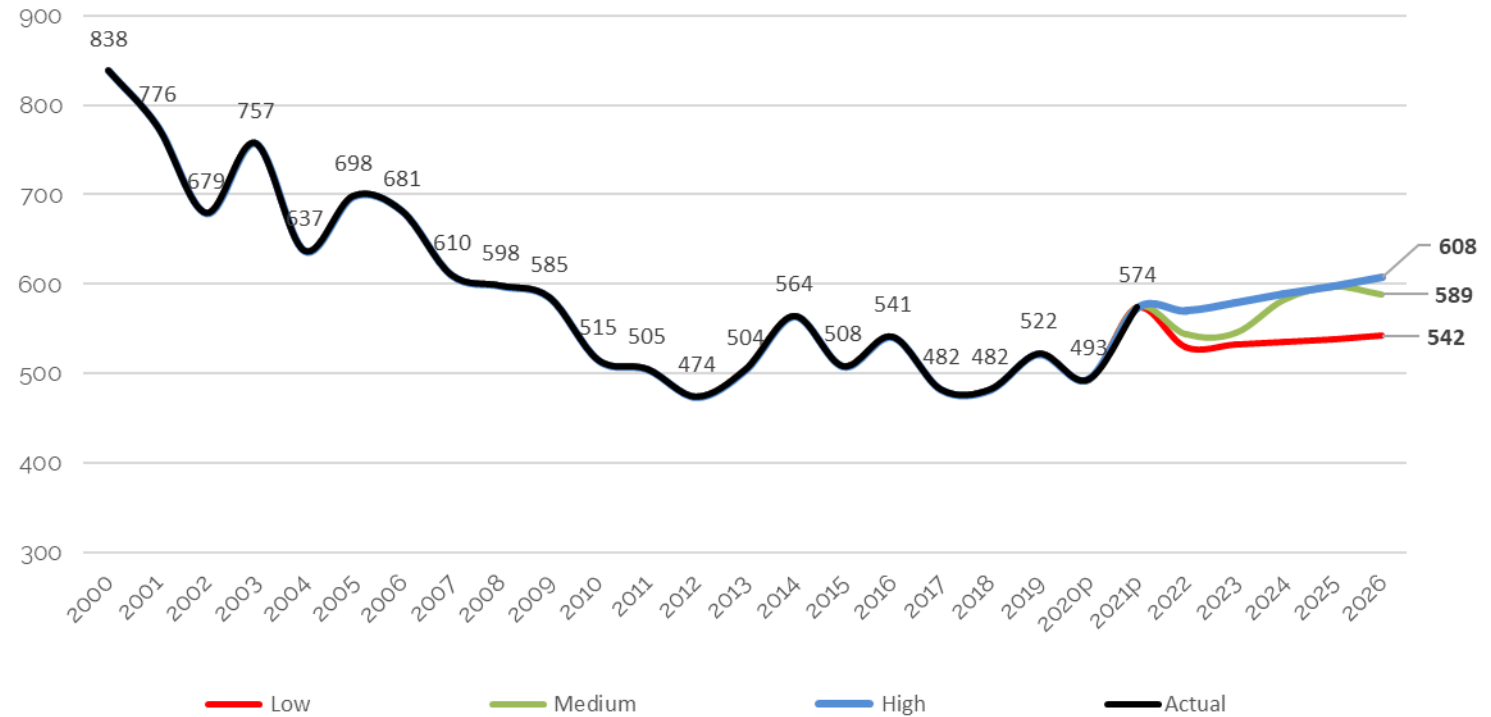
Source: Decennial Census



# Reported Births & Projections

- 2021 preliminary births from CTDPH show a birth rebound to 574 births, which is the greatest number of reported births since 2014
- Demographic and mathematical models were developed to project future births
- 2020 census cohort level data in combination with national and CT specific fertility were used to generate the demographic birth projection models
- All three models yield a continuation of the elevated births for 2022-26
  - Low model: avg. 536 (530-542)
  - Medium model: avg. 572 (544-589)
  - High model: avg. 589 (570-608)

Fairfield Actual and Projected Births: 2000 to 2026

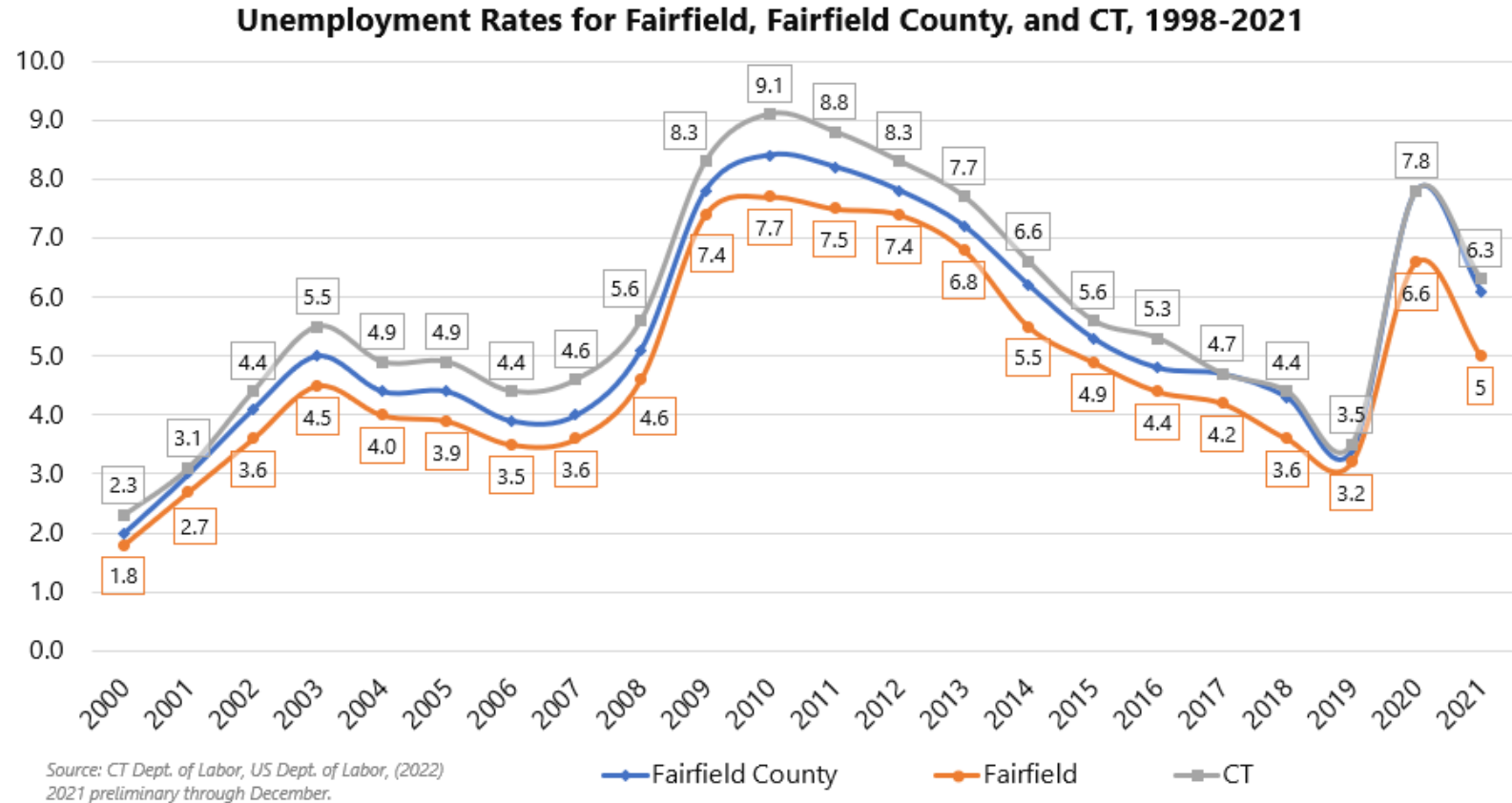


Source: Connecticut Department of Public Health. 2020 and 2021 are still preliminary.



# Unemployment

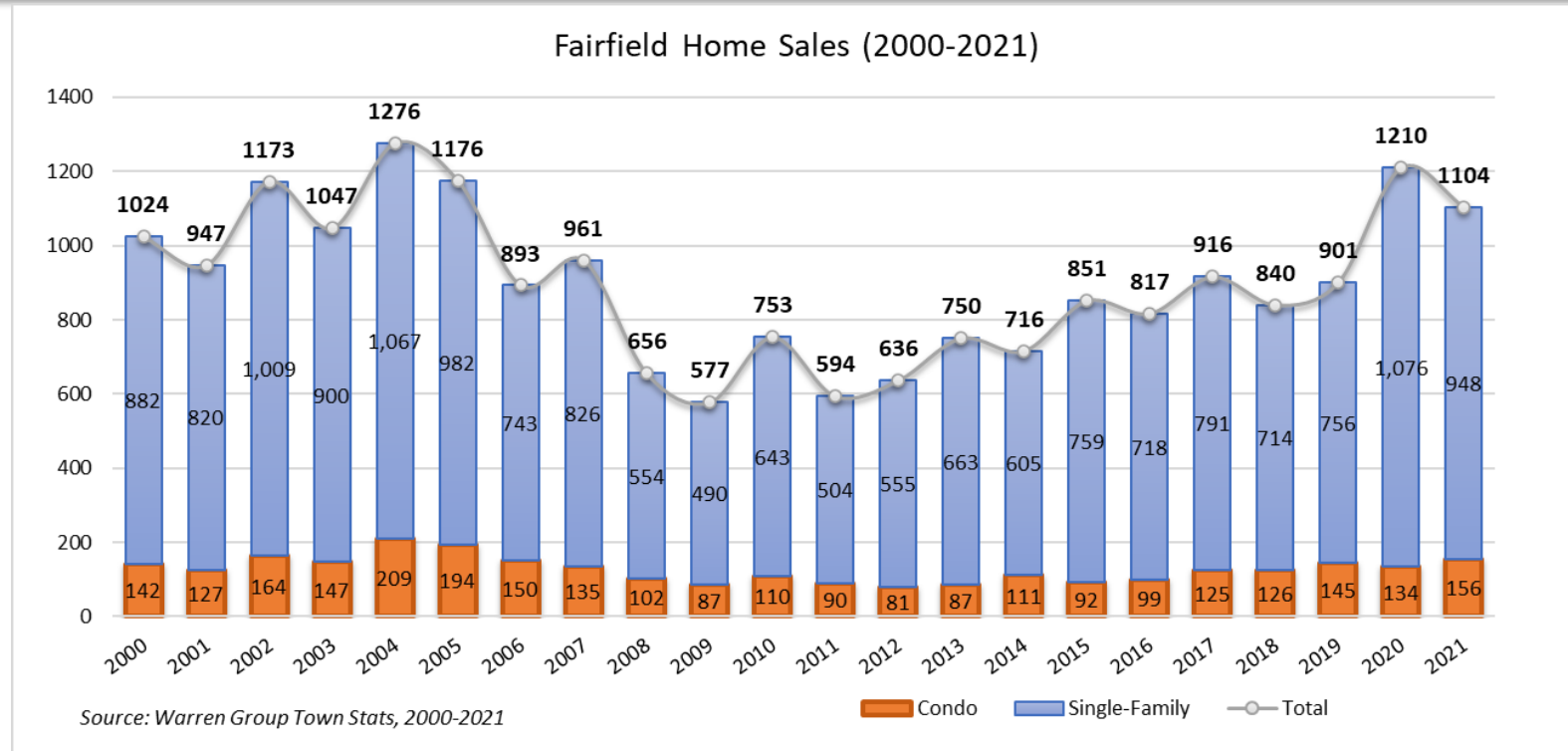
- The local unemployment rate peaked at 6.6% in 2020, but has since dropped to 5.0% 2021
- Improving UE rate locally, county and statewide for 2021
- The economic impact and employment trends of the pandemic should continue to be closely monitored, as conditions are closely tied to migration and housing market trends





# Housing Market

- Single Family (SF) Homes sales peaked in 2020 at 1,076, exceeding the prior peak in 2004 (1,067). However, total sales still lags the peak of 2004
- For 2021, SF total sales dipped slightly, to just under 950
- Condo sales exceed 150 in 2021 up from the recent 5-year average of 126

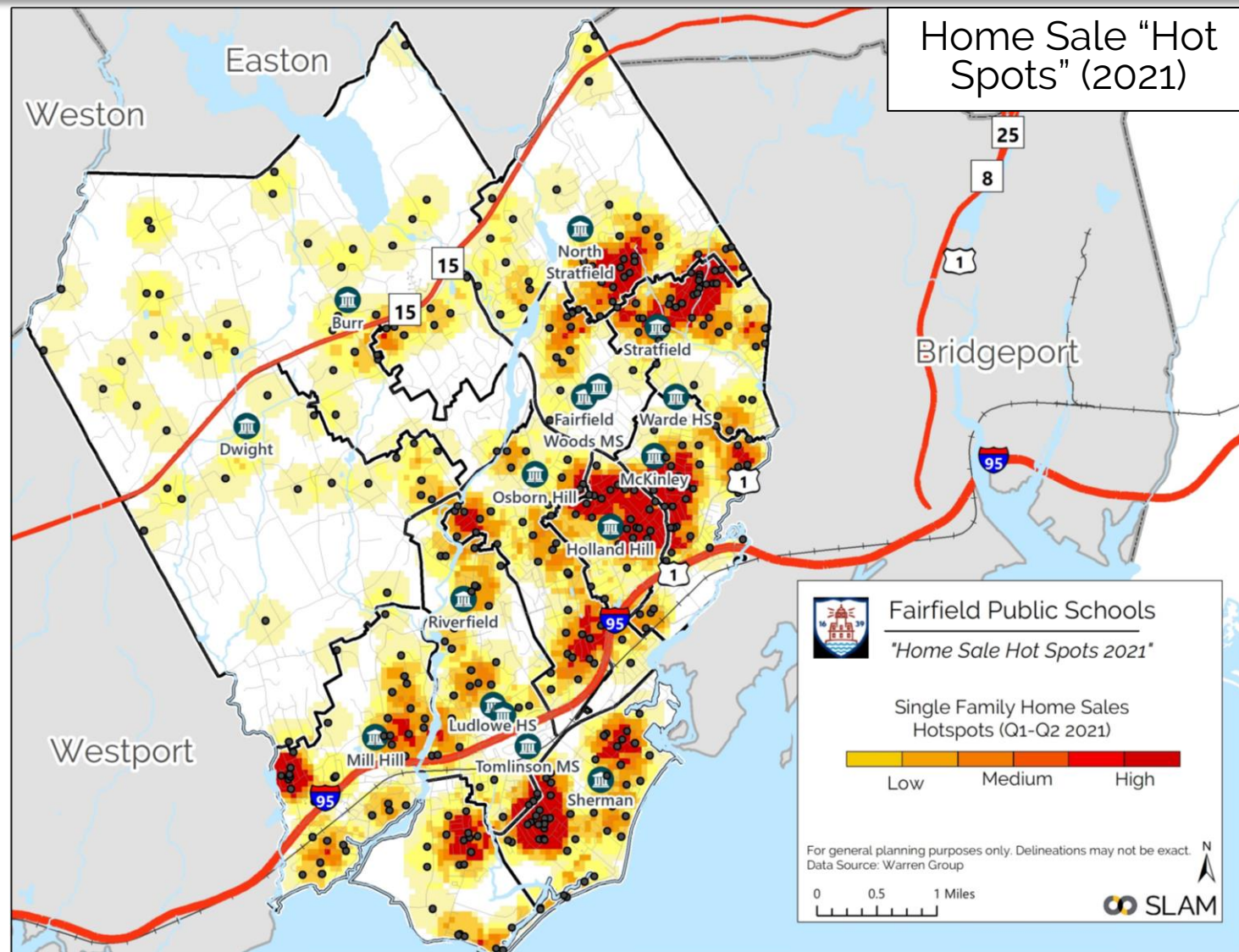
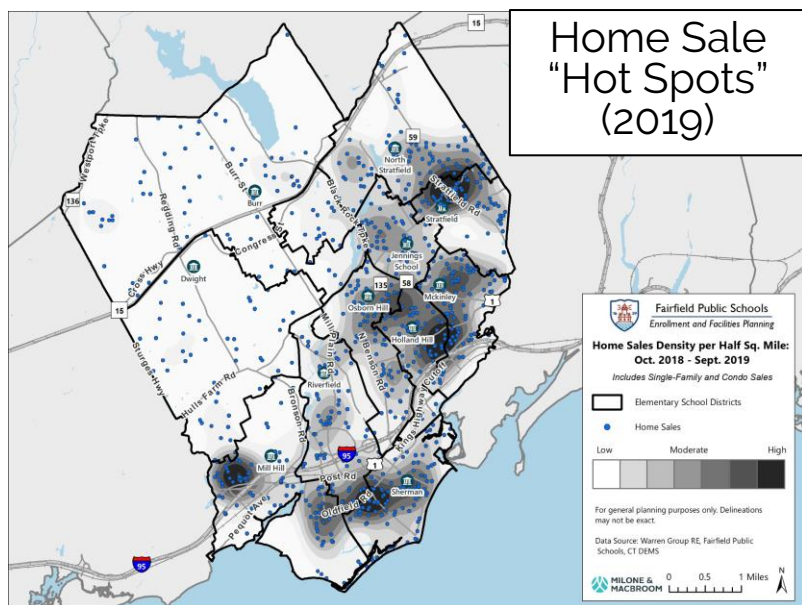






# Housing Market

- Single family home sales by address were analyzed to assess trends within each area of Town
- Clustering of sales in 2021 largely reflect the geographic extent of the “hot spot” analysis conducted in 2019 (see below)

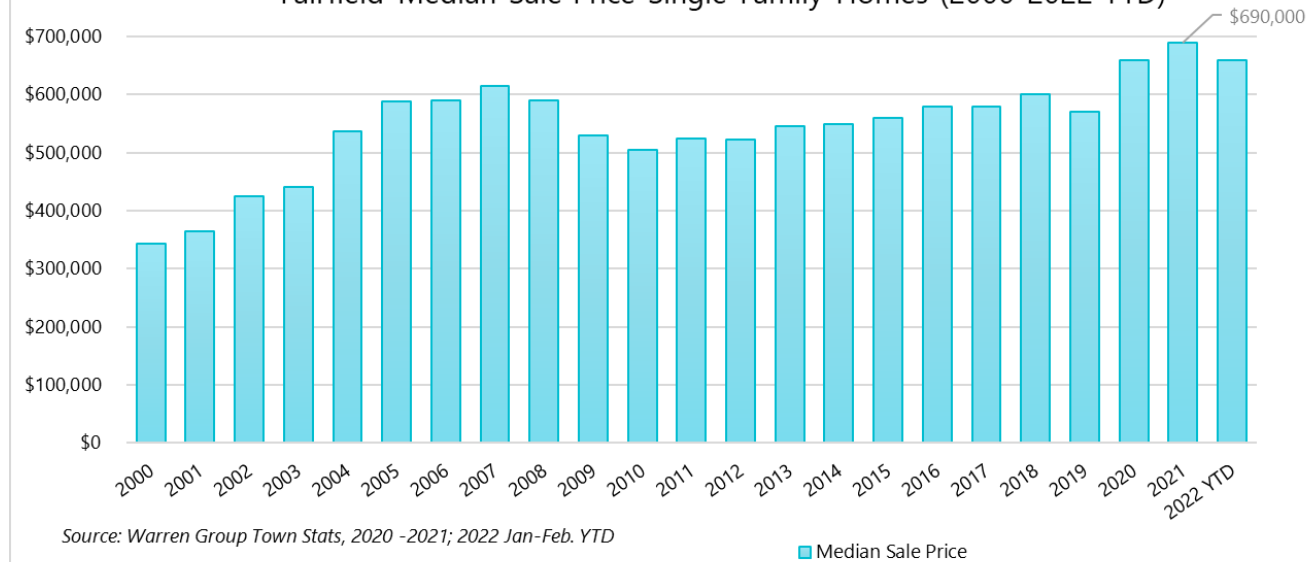


Fairfield Public Schools



# Housing Market

Fairfield Median Sale Price Single Family Homes (2000-2022 YTD)



Comparison of Median Single-Family Home Sale Prices: 2008 & 2021



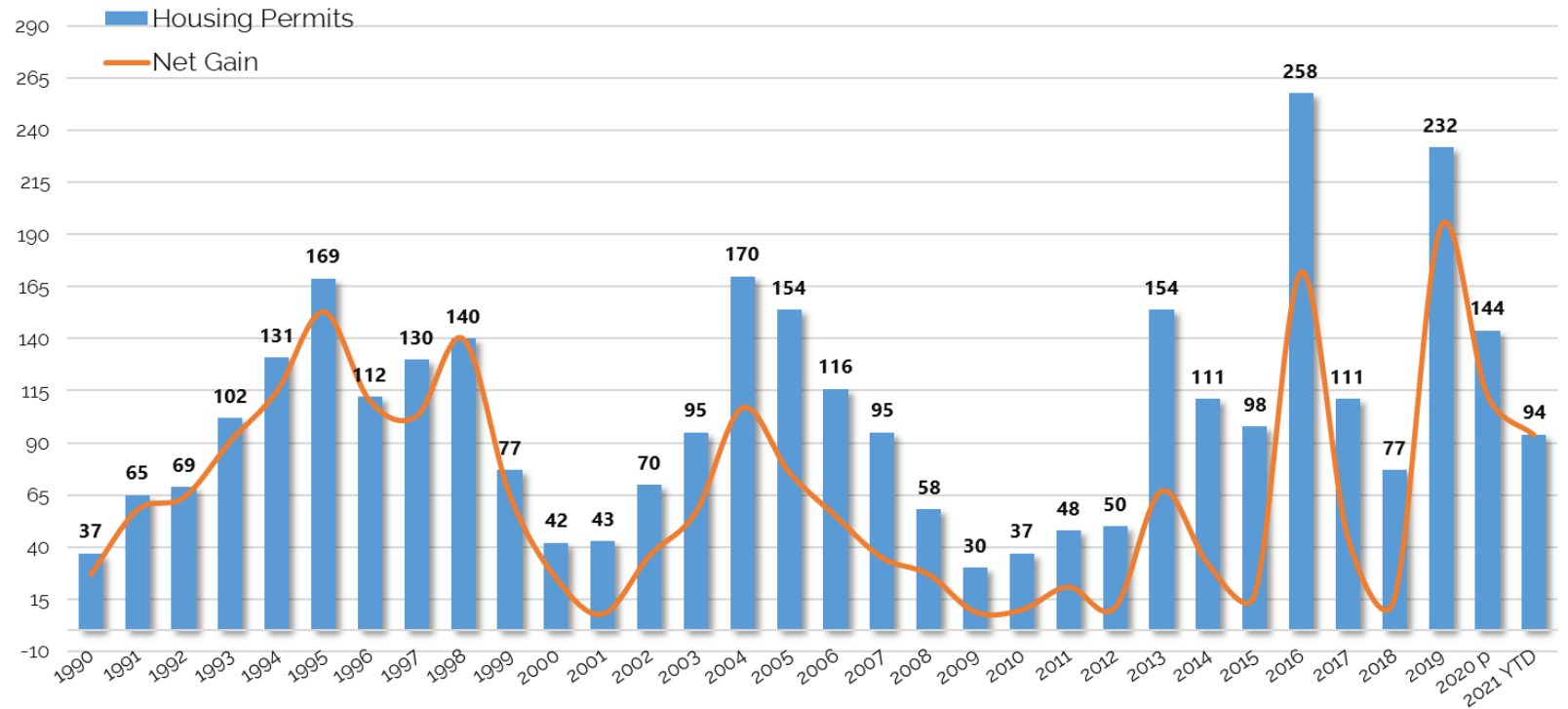
- 2021 median SF sale price has recorded a recent a high of \$690K , up over \$30K over 2020 and nearly \$120K from 2019; Condos experienced a recent high in 2021 at \$445K
- Last peak for single family median sale price was \$615K in 2007
- Other area communities are experiencing similar trends since the pandemic, with sale prices making a complete recovery since the "Great Recession"



# Housing Trends

- Over the last 5-years, Fairfield has averaged 132 new housing permits, and factoring demolitions, yields a net of 92 new dwelling units per year
- Most of the Town's net gain is a result of large multi-family projects, particularly in 2013, 2016, and 2019

Fairfield Housing Permits 1990-2021 YTD



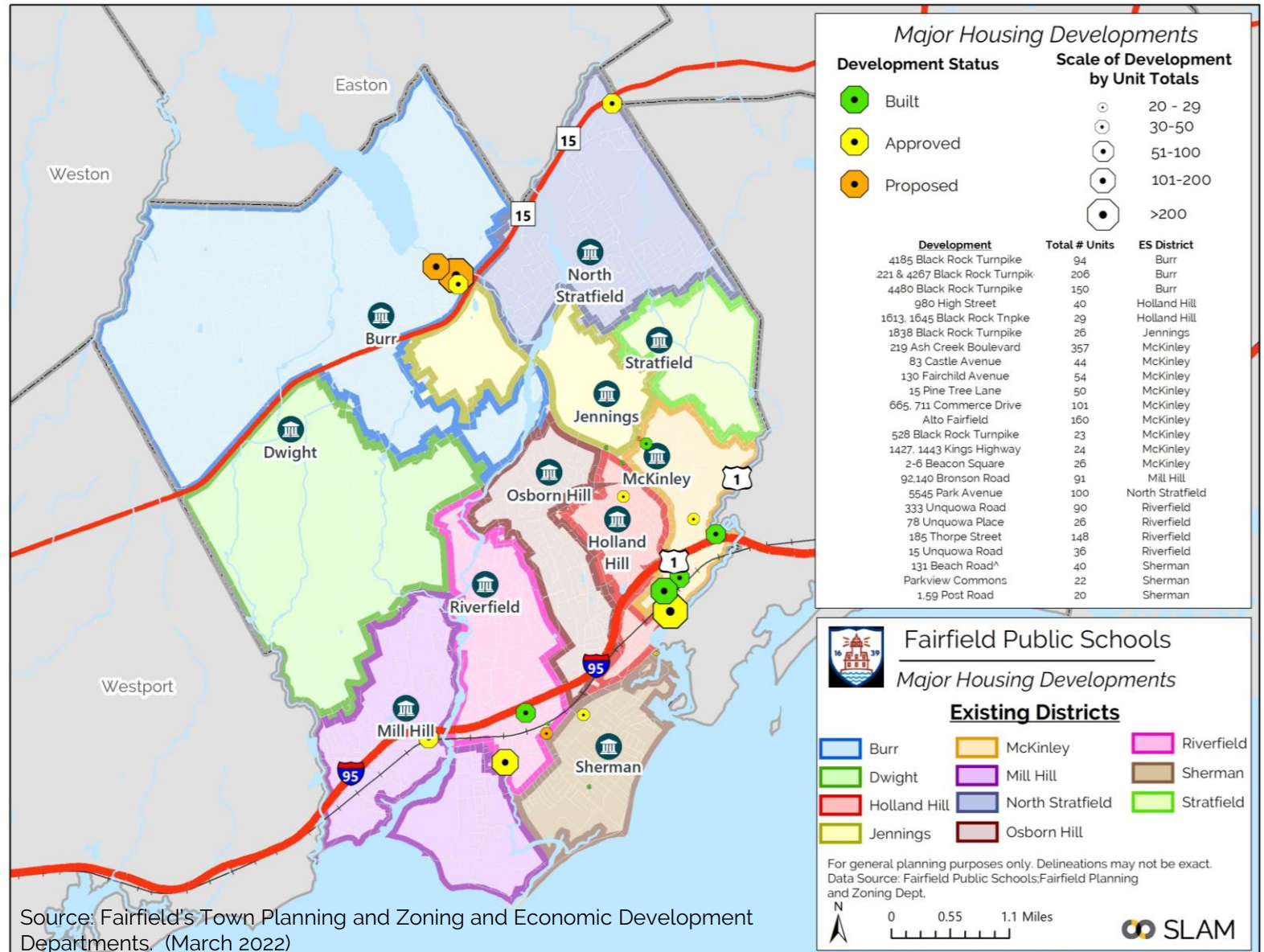
Source: DECD, 2021 YTD Jan.-Nov. Fairfield Planning Department March 2022. Demolition data not available for 2021 and not reflected in net gains.





# Major Residential Development

- Information on proposed, approved, and recently built residential developments was provided by Fairfield's Town Planning and Zoning and Economic Development Departments
- Several major housing developments were recently completed, under construction, approved, or planned
- Several developments south of I-95 were recently completed or recently approved around the Fairfield Metro North train station
- Additional notable projects proposed include 2 projects, totaling over 300 units north of the parkway along Black Rock Tpke







# Major Residential Development

- Fairfield's Town Planning and Zoning and Economic Development Departments have been studying the number of FPS students generated from new developments in Town. Based on **Fall 2021 enrollment, there are 0.16 FPS** students generated per unit. The prior study in 2019 found that 0.15 were generated.
- The above housing multiplier was used for forthcoming multi-family projects and added to the base projections and phased in over the next 7-years
- Forthcoming multi-family projects are estimated to produce 209 K-12 students**

Student Generation from Recent Housing Development (> 20 Units)

Development	Development Type	Housing Units	Market Rate Units	Occupancy Type	Status	Actual Students Generated (2021) <sup>(1)</sup>	Estimated Students Generated <sup>(2)</sup>	ES School
1.59 Post Road	Inclusionary	20	18	Rental	Approved		3	Sherman
Parkview Commons	Owner Deed Restricted	22		Owner	Recently Built	0		Sherman
528 Black Rock Turnpike	Set Aside Developments (CGS 8-30g)	23	16	Rental	Under Const.		4	McKinley
1427, 1443 Kings Highway	Set Aside Developments (CGS 8-30g)	24	16	Rental	Approved		4	McKinley
2-6 Beacon Square	Set Aside Developments (CGS 8-30g)	26	18	Rental	Proposed		4	McKinley
1838 Black Rock Turnpike	Rental Deed Restricted	26	20	Rental	Recently Built	0		Jennings
78 Unquowa Place	Set Aside Developments (CGS 8-30g)	26	18	Rental	Under Const.		4	Riverfield
1613, 1645 Black Rock Tnpke	Set Aside Developments (CGS 8-30g)	29	20	Rental	Recently Built		5	Holland Hill
15 Unquowa Road	Inclusionary	36	32	Rental	Proposed		6	Riverfield
980 High Street	Governmentally Assisted/CGS 8-30g	40	8	Rental	Approved		6	Holland Hill
131 Beach Road^	Set Aside Developments (CGS 8-30g)	40	28	Rental	Approved		6	Sherman
83 Castle Avenue	Set Aside Developments (CGS 8-30g)	44	30	Rental	Approved		7	McKinley
15 Pine Tree Lane	Governmentally Assisted/CGS 8-30g	50	0	Rental	Recently Built	7		McKinley
130 Fairchild Avenue	Set Aside Developments (CGS 8-30g)	54	27	Rental	Recently Built	1		McKinley
333 Unquowa Road	Inclusionary	90	81	Rental	Recently Built	3		Riverfield
92,140 Bronson Road	Set Aside Developments (CGS 8-30g)	91	63	Rental	Approved		15	Mill Hill
4185 Black Rock Turnpike	Set Aside Developments (CGS 8-30g)	94	65	Rental	Approved		15	Burr
5545 Park Avenue	Set Aside Developments (CGS 8-30g)	100	70	Rental	Approved		16	North Stratfield
665, 711 Commerce Drive	Inclusionary	101	90	Rental	Recently Built	4		McKinley
185 Thorpe Street	Inclusionary	148	133	Elder	Approved		0	Riverfield
4480 Black Rock Turnpike	Set Aside Developments (CGS 8-30g)	150	105	Rental	Proposed		24	Burr
Alto Fairfield	Inclusionary	160	144	Rental	Recently Built	7		McKinley
4221 & 4267 Black Rock Turnpike	Set Aside Developments (CGS 8-30g)	206	144	Rental	Proposed		33	Burr
219 Ash Creek Boulevard	Inclusionary	357	321	Rental	Approved		57	McKinley
Total:		1,957	1,467			22	209	

Source: Fairfield's Town Planning and Zoning and Economic Development Departments. (March 2022)



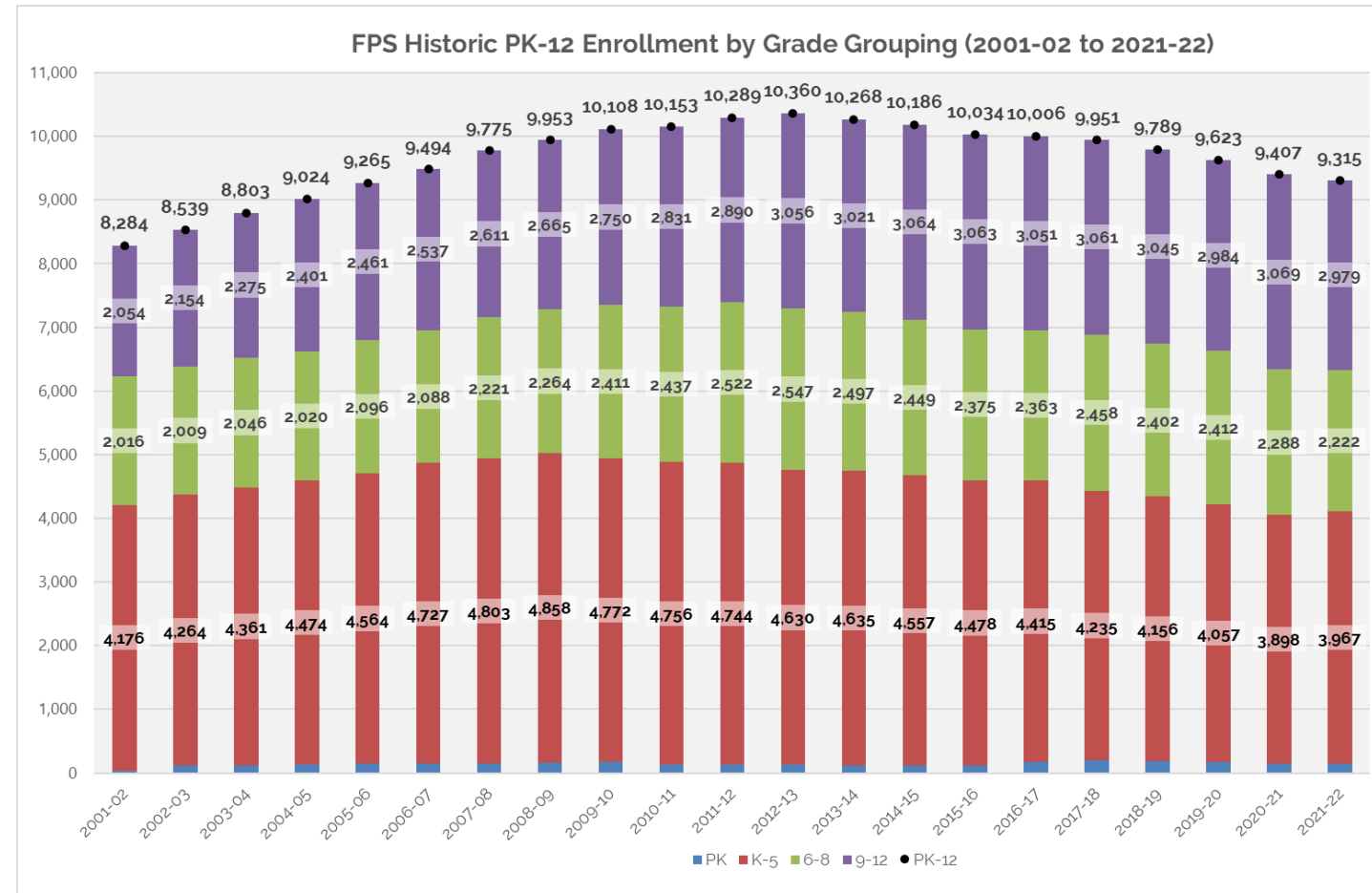
# Enrollment Trends & Analysis

## Enrollment Trends & Analysis



# Districtwide Historic Enrollments

- PK-12 enrollment peaked in 2012-13 at 10,360 and has since declined annually at an average rate of 1.1%
- Over the last 5-years, PK-12 enrollment avg. 9,617 students.
- Over this period, enrollment change has varied across grade levels with:
  - K-5<sup>th</sup> avg: 4,063 students
  - 6<sup>th</sup>-8<sup>th</sup> avg: 2,356 students
  - 9<sup>th</sup>-12<sup>th</sup> avg: 3,028 students
- Over the last year, elementary enrollment grew by 1.8%, middle declined by 2.9%, and high declined by 2.9%, resulting in an overall change of -1%





# Elementary Historic Enrollments

ES School	2011-12	2012-13	2013-14	2014-15	2015-16	2016-17	2017-18	2018-19	2019-20	2020-21	2021-22	5-yr Δ	10-yr Δ
Burr	415	413	421	397	388	375	380	388	366	351	339	-9.6%	-18.3%
Dwight	291	278	274	289	310	315	315	298	274	266	255	-19.0%	-12.4%
Holland Hill	352	380	399	410	407	404	379	359	350	350	360	-10.9%	2.3%
Jennings	361	334	327	324	320	321	289	295	288	270	259	-19.3%	-28.3%
McKinley	452	442	462	445	433	442	432	438	437	442	441	-0.2%	-2.4%
Mill Hill	459	445	429	413	382	385	347	346	354	360	368	-4.4%	-19.8%
North Stratfield	485	454	444	442	416	398	380	377	371	372	413	3.8%	-14.8%
Osborn Hill	541	518	526	503	490	446	423	418	407	371	409	-8.3%	-24.4%
Riverfield	419	411	399	399	409	425	414	406	406	365	375	-11.8%	-10.5%
Roger Sherman	456	449	457	475	481	483	470	447	423	413	402	-16.8%	-11.8%
Stratfield	511	506	497	460	442	421	406	384	381	338	337	-20.0%	-34.1%

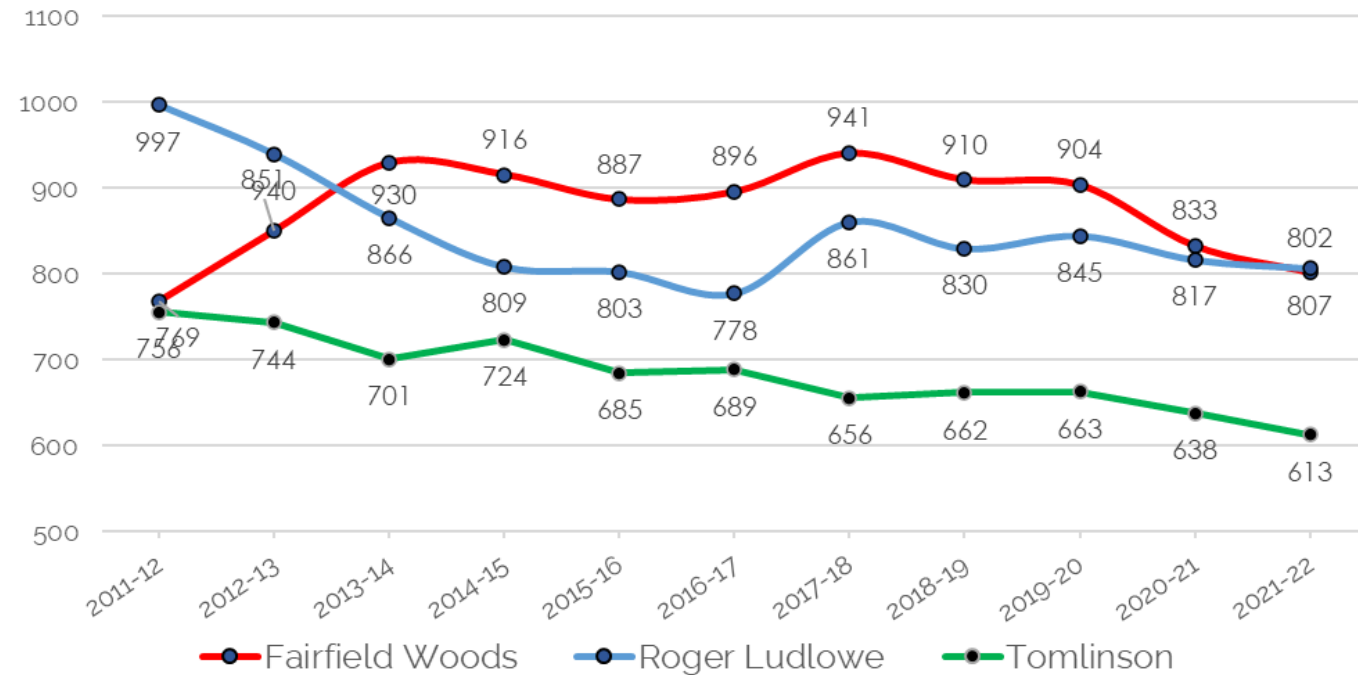
- Overall K-5 enrollment has declined by 777 students over the last decade to 3,967 students in 2021-22
- Although the collective K-5 grades declined by 16.4% over the last decade, there have been localized enrollment fluctuations across the individual elementary schools.
- Over the last 5-years, there was range of enrollment trends from modest enrollment growth at North Stratfield (3.8%) to unchanged enrollment at McKinley to a 20% decline at Stratfield



# Middle Historic Enrollments

- Overall, 6-8 enrollment enrollment has declined by ~300 students over the last decade to 2,222 students in 2021-22
- Since 2013-14, enrollment at Fairfield Woods has been larger than Roger Ludlowe. Over the last 3-years, enrollment has been converging. For the first time in nearly a decade, Ludlowe now has the larger enrollment, albeit by 5 students
- Over the last 5-years, Ludlowe has grown by ~4%, while Woods and Tomlinson declined by ~11%

**Fairfield Middle School Historic Enrollment**

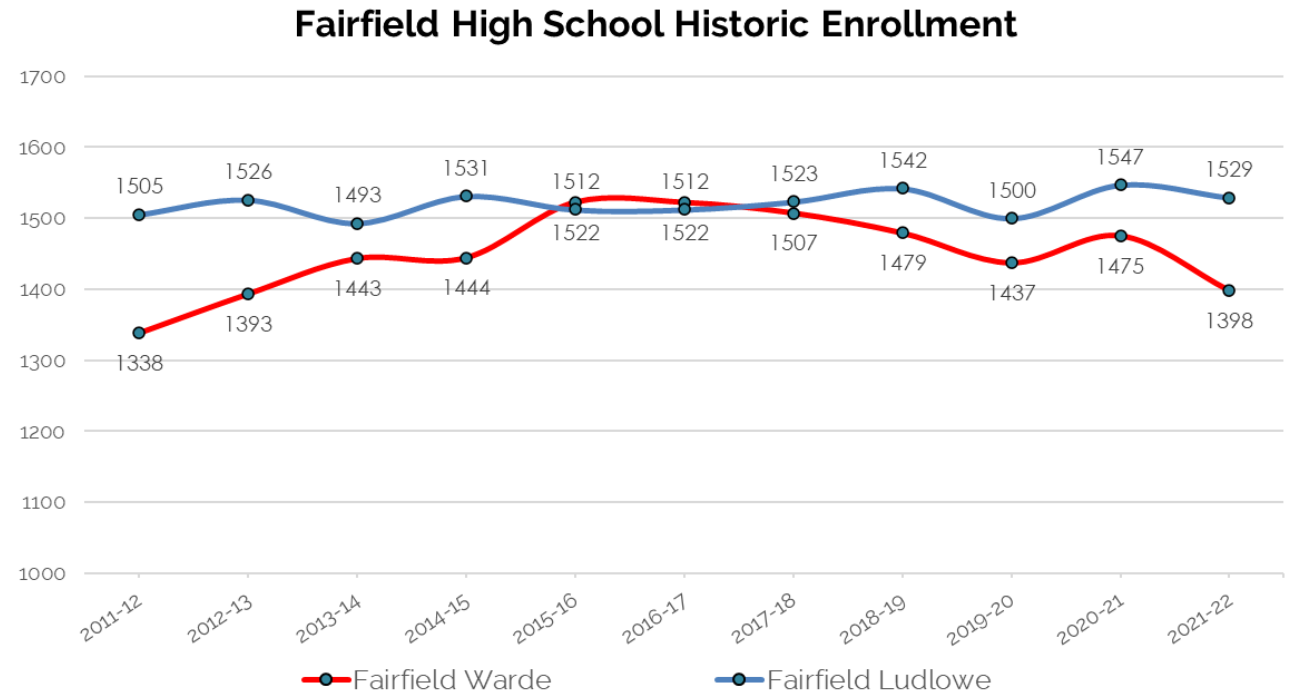


MS School	2011-12	2012-13	2013-14	2014-15	2015-16	2016-17	2017-18	2018-19	2019-20	2020-21	2021-22	5-yr Δ	10-yr Δ
Fairfield Woods	769	851	930	916	887	896	941	910	904	833	802	-10.5%	4.3%
Roger Ludlowe	997	940	866	809	803	778	861	830	845	817	807	3.7%	-19.1%
Tomlinson	756	744	701	724	685	689	656	662	663	638	613	-11.0%	-18.9%



# High Historic Enrollments

- Over the last 10-years, Ludlowe's enrollment has been larger than Warde's, except for 2015-2017
- In the last year, the gap widened due to the decline in Warde's enrollment to just under 1,400 students
- Over the last 5-years, Ludlowe averaged 1,528 students while Warde averaged 1,459 students

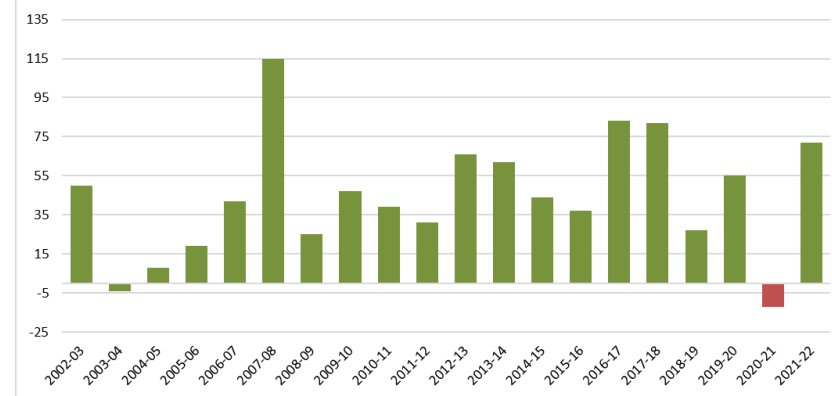


HS School	2011-12	2012-13	2013-14	2014-15	2015-16	2016-17	2017-18	2018-19	2019-20	2020-21	2021-22	5-yr Δ	10-yr Δ
Fairfield Warde	1338	1393	1443	1444	1522	1522	1507	1479	1437	1475	1398	-8.1%	4.5%
Fairfield Ludlowe	1505	1526	1493	1531	1512	1512	1523	1542	1500	1547	1529	1.1%	1.6%
Alternative HS	48	49	36	34	29	29	31	24	47	47	55	89.7%	14.6%

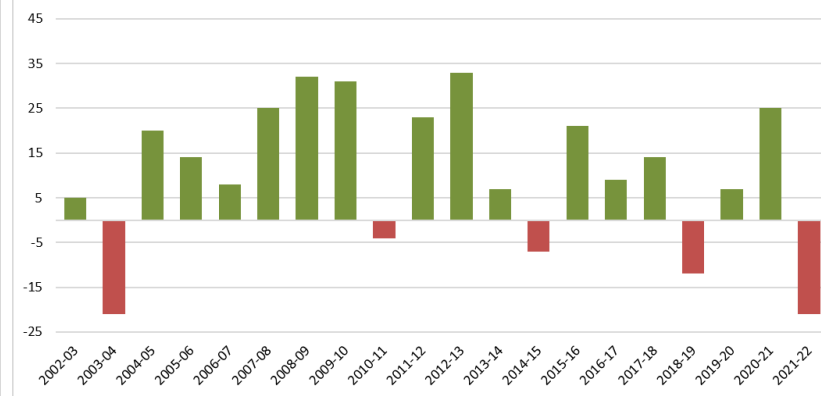


# Net Migration

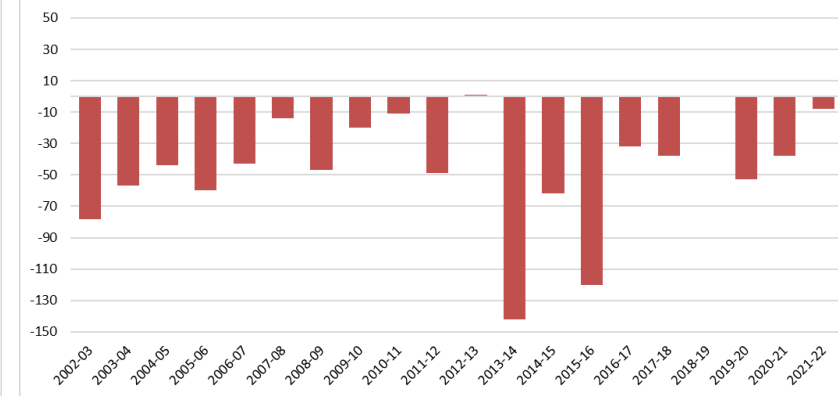
Historic Elementary Net Migration



Historic Middle School Net Migration



Historic High School Net Migration



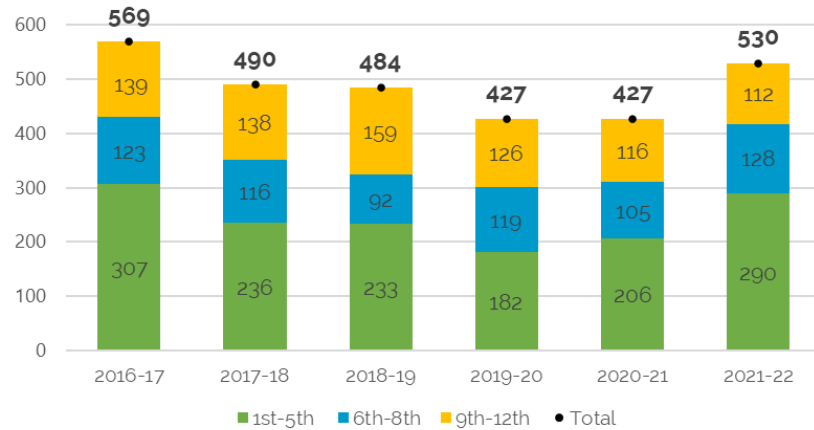
- After a net out-migration of -10 elementary students in 2020, elementary net migration rebounded to +72 students in 2021, which was the highest level since 2017-18
- After a recent high of +25 students in 2020, Middle School experienced a net out-migration of -21 students in 2021
- High School (9<sup>th</sup>-12<sup>th</sup>) has historically experienced net out-migration (-49) over last decade. For 2021, net out-migration was much lower than the recent levels at just -8 students



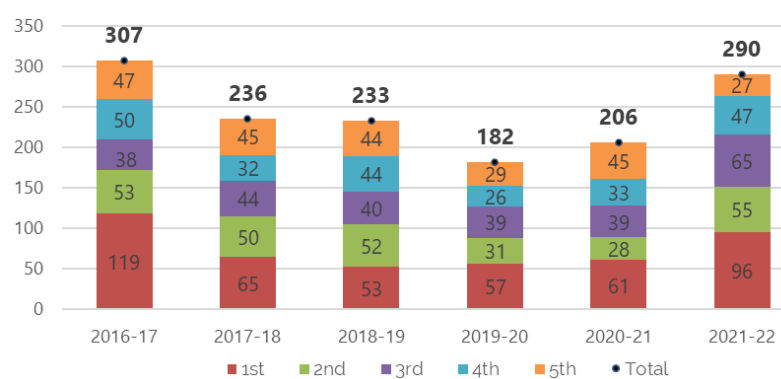


# Student In-Migration Analysis

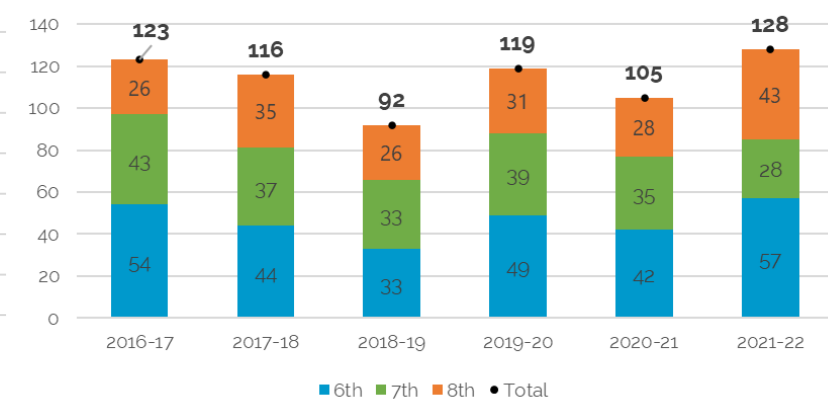
"New-to-District Students" By Grade Grouping



"New-to-District Students" (Grades 1st-5th)

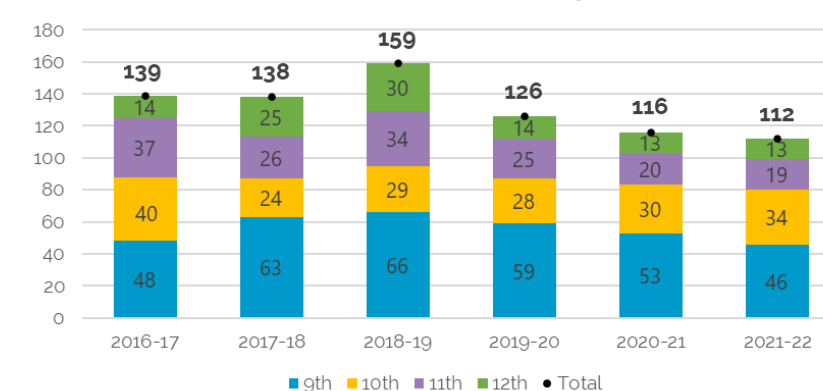


"New-to-District" Students (Grades 6th-8th)



- "New-to-District Students" are identified by comparing unique student identifiers (SASID's) that were not enrolled the previous year for students in grades 1-12
- Major uptick in 2021-22 (530 students) when compared to preceding 4-years, which averaged 457
- For 2021-22, greatest increase was in 1<sup>st</sup>-5<sup>th</sup> grade at 290 students, with 1<sup>st</sup> and 3<sup>rd</sup> grade exhibiting the greatest gains
- Overall 6<sup>th</sup>- 12<sup>th</sup> grade was on par with recent historic trend

"New-to-District" Students (9th-12th)



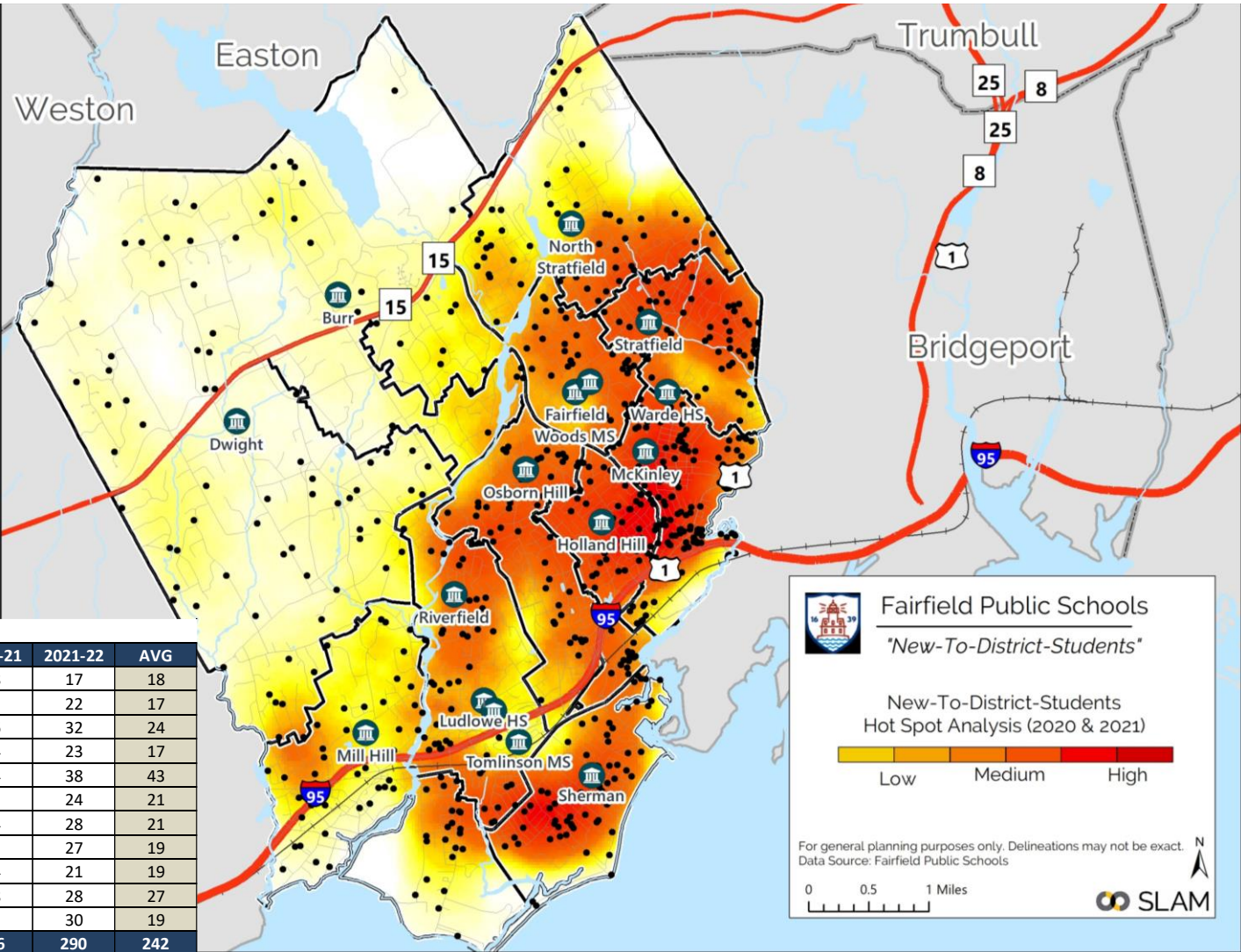




# Student In-Migration Analysis

- “New-to-District Students” were geocoded for 2020-21 & 2021-22.
- “Hot spots” were identified along the eastern half of Fairfield, with heavy clustering in McKinley, Holland Hill, Sherman, Stratfield and to a lesser degree in Osborn Hill, North Stratfield, Mill Hill and Riverfield.

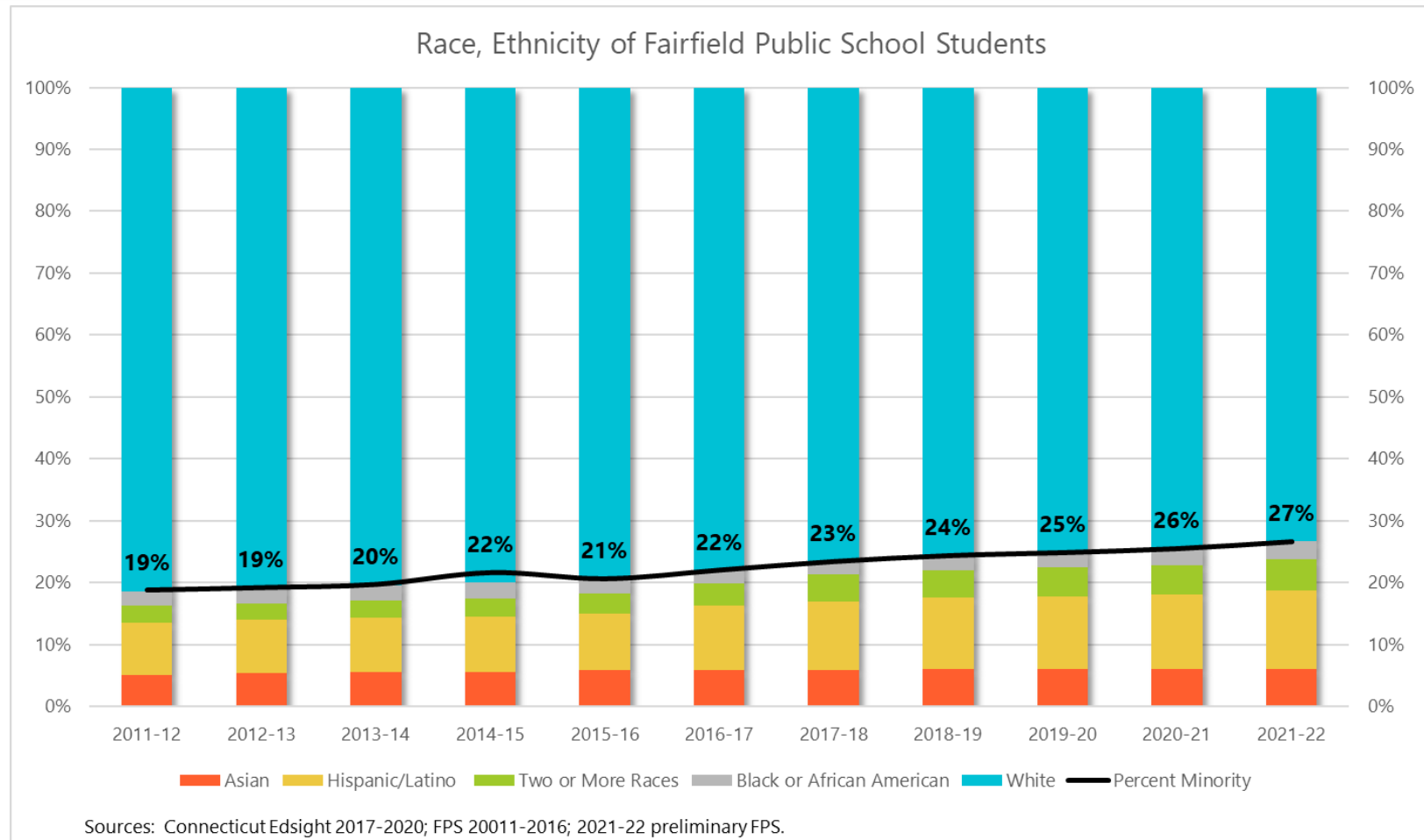
New-to-District Students by School (Grades 1-5)							
School Name	2016-17	2017-18	2018-19	2019-20	2020-21	2021-22	AVG
Burr	23	15	23	10	18	17	18
Dwight	19	24	14	8	15	22	17
Holland Hill	31	23	25	16	16	32	24
Jennings	16	16	16	14	14	23	17
McKinley	53	48	37	37	44	38	43
Mill Hill	32	17	16	14	23	24	21
North Stratfield	30	13	21	20	14	28	21
Osborn Hill	20	13	26	14	11	27	19
Riverfield	33	17	14	14	14	21	19
Roger Sherman	26	31	26	21	28	28	27
Stratfield	24	19	15	14	9	30	19
Total	307	236	233	182	206	290	242





# Historic Enrollment Racial Composition

- Fairfield's student body has become increasingly diverse over the last decade. Based on 2021-22 data, FPS is at 27% minority, which increased from 19% in 2010-11
- Over the last decade, the largest growth occurred in the Hispanic/Latino cohorts and Two or More Races
- Official 2021-22 racial balance data from the State Department of Education is not yet available





# Historic K-5 Racial Balance Trends

- K-5 percent minority has increased by 3.4% over the last 5-years, with three schools (Burr, Osborn Hill, and Riverfield) exceeding the districtwide change.
- Based on 2021-22 enrollment, McKinley's absolute imbalance stands at 29.2%

K-5 Minority Composition by Year

School	2012-13	2013-14	2014-15	2015-16	2016-17	2017-18	2018-19	2019-20	2020-21	2021-22	5-YR Δ
Burr <sup>(1)</sup>	16.0%	16.1%	18.0%	19.9%	21.8%	27.2%	26.3%	28.4%	27.1%	28.6%	6.8%
% Deviation	-3.0%	-3.3%	-2.5%	-0.8%	-1.4%	2.3%	0.7%	2.8%	0.7%	2.1%	
Dwight <sup>(1)</sup>	14.0%	16.0%	14.7%	14.3%	17.8%	14.0%	17.8%	17.9%	19.2%	18.0%	0.2%
% Deviation	-5.0%	-3.4%	-5.8%	-6.4%	-5.4%	-10.8%	-7.8%	-7.7%	-7.2%	-8.5%	
Holland Hill	32.4%	32.4%	33.2%	32.8%	37.9%	39.8%	38.7%	36.9%	37.7%	39.2%	1.3%
% Deviation	13.4%	13.0%	12.7%	12.1%	14.7%	15.0%	13.1%	11.3%	11.3%	12.6%	
Jennings	17.2%	18.0%	19.4%	20.1%	20.5%	25.3%	24.8%	25.4%	25.6%	23.2%	2.7%
% Deviation	-1.8%	-1.4%	-1.1%	-0.6%	-2.7%	0.4%	-0.9%	-0.3%	-0.8%	-3.4%	
McKinley	43.4%	45.9%	49.1%	47.9%	53.2%	53.2%	55.5%	55.6%	56.7%	55.8%	2.6%
% Deviation	24.4%	26.5%	28.6%	27.2%	30.0%	28.4%	29.9%	30.0%	30.3%	29.2%	
Mill Hill	14.2%	15.2%	13.1%	15.7%	18.8%	20.2%	19.1%	19.2%	20.8%	19.0%	0.2%
% Deviation	-4.8%	-4.2%	-7.4%	-5.0%	-4.4%	-4.7%	-6.6%	-6.4%	-5.6%	-7.5%	
North Stratfield	19.4%	19.8%	22.0%	20.5%	24.7%	24.2%	25.2%	23.4%	23.9%	24.5%	-0.2%
% Deviation	0.4%	0.4%	1.5%	-0.2%	1.5%	-0.6%	-0.4%	-2.2%	-2.5%	-2.1%	
Osborn Hill	8.9%	11.2%	12.1%	14.5%	15.3%	18.9%	21.3%	21.9%	23.5%	22.2%	7.0%
% Deviation	-10.1%	-8.2%	-8.4%	-6.2%	-7.9%	-6.0%	-4.3%	-3.7%	-3.0%	-4.3%	
Riverfield	13.0%	11.8%	12.3%	12.5%	13.9%	15.3%	16.5%	16.0%	16.4%	18.4%	4.5%
% Deviation	-6.0%	-7.6%	-8.2%	-8.2%	-9.3%	-9.6%	-9.1%	-9.6%	-10.0%	-8.2%	
Sherman	13.4%	13.8%	13.7%	14.0%	12.8%	14.5%	15.4%	12.5%	12.1%	12.4%	-0.4%
% Deviation	-5.6%	-5.6%	-6.8%	-6.7%	-10.4%	-10.4%	-10.2%	-13.1%	-14.3%	-14.1%	
Stratfield	17.2%	17.3%	19.1%	18.6%	20.8%	22.9%	22.2%	21.0%	21.3%	24.1%	3.3%
% Deviation	-1.8%	-2.1%	-1.4%	-2.1%	-2.4%	-2.0%	-3.4%	-4.6%	-5.1%	-2.4%	
K-5 District Avg	19.0%	19.4%	20.5%	20.7%	23.2%	24.9%	25.6%	25.6%	26.4%	26.6%	3.4%

Source: Connecticut SDE Racial Balance Tables: 2012-2020; Fairfield Public Schools, PSIS Enrollment: 2021-22

1. Includes Pre-K students at Burr and Dwight

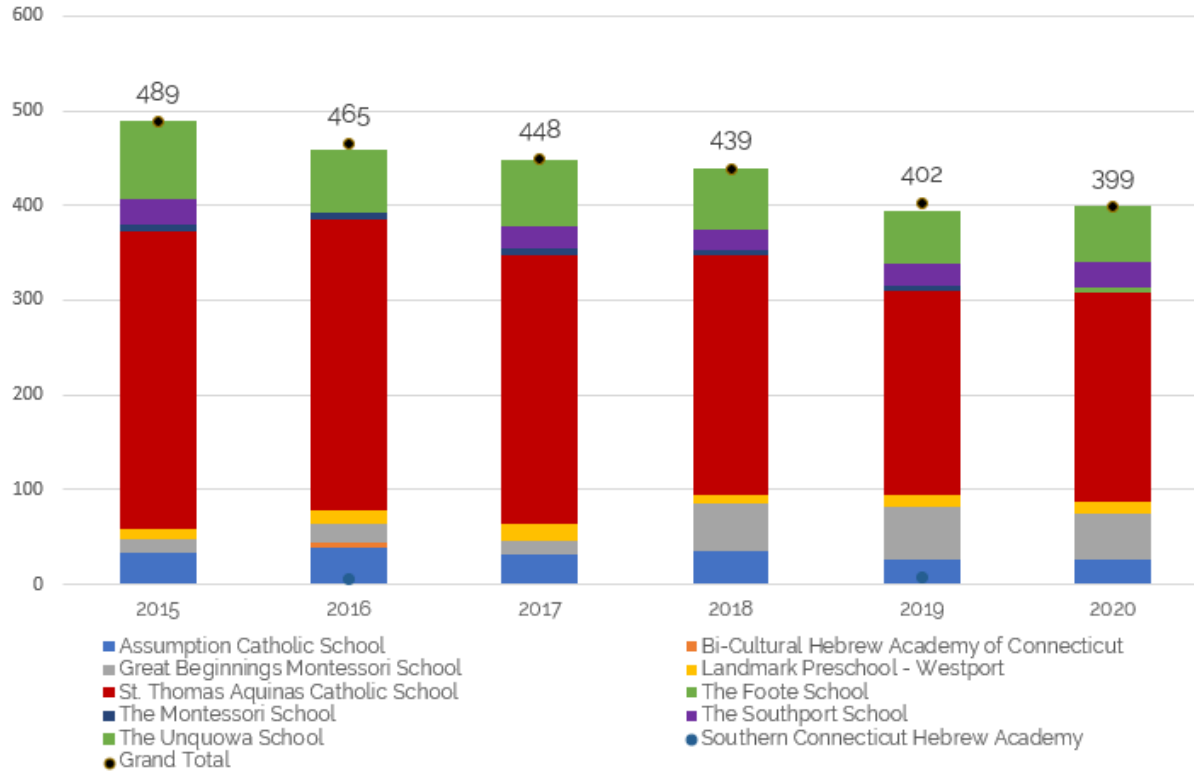
2. District Average only includes K-5 students

3. Data for 2021-22 is unofficial



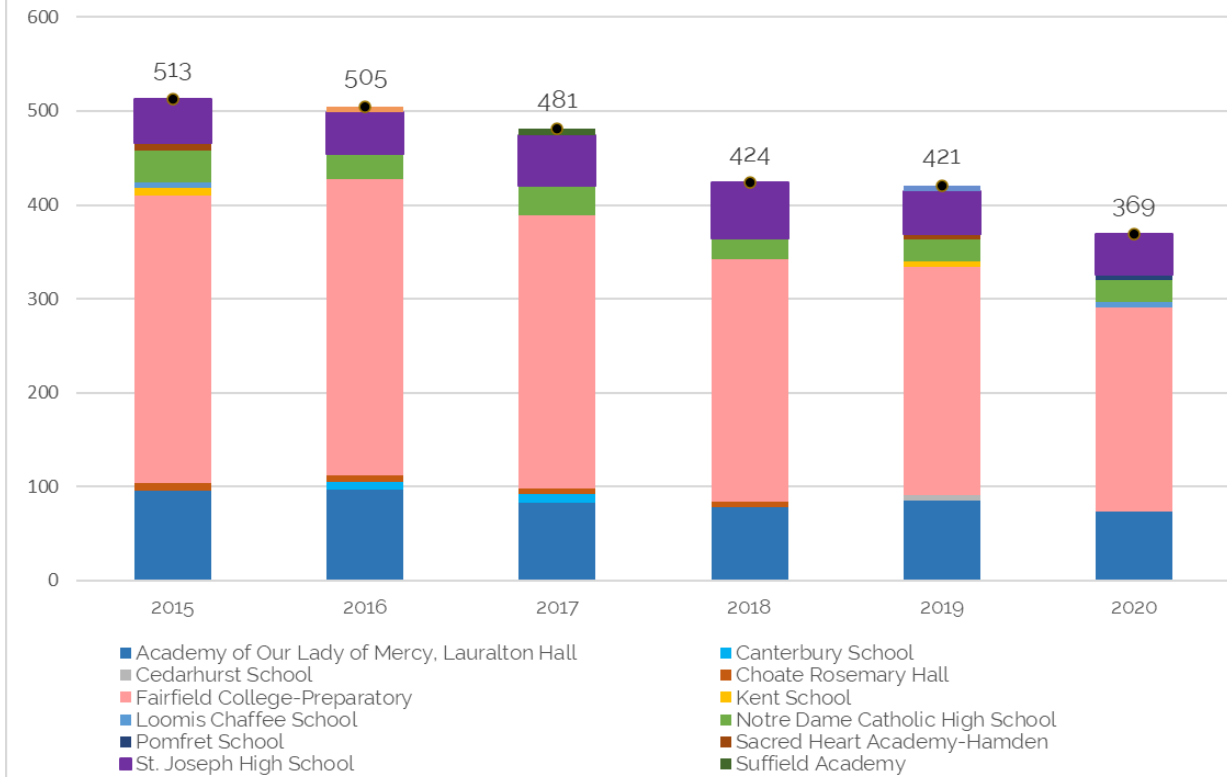
# Residents Attending Other Non-Public Schools

Fairfield Resident Students (PK-8) attending Non-Public Schools



Source: CT EdSight 2015-2020. Please note that this data file has been suppressed by the CT State Department of Education.

Fairfield Resident Students (9-12) attending Non-Public Schools



Source: CT EdSight 2015-2020. Please note that this data file has been suppressed by the CT State Department of Education.

- Non-public school enrollment has decreased since 2015-16, by 90 students at PK-8, & 144 students at 9-12
- The greatest number of students attend St. Thomas Aquinas for PK-8 & Fairfield College Preparatory for 9-12



# Enrollment Projections

## Enrollment Projections Building Blocks

### Starting Data

Critical to the overall accuracy of the projections, as each year builds upon the last.

**Town of  
Fairfield  
Births**

*Obtained from CT  
DPH & Town Clerk*

**Historic  
Enrollment  
Trends**

*Obtained from  
FPS and EdSight*

### Demographic and Housing Data

Used to inform model selection

**Unemployment  
(Town, Region)**

**Home Sales  
(1-family,  
condos)**

**Housing  
Developments –  
Approved &  
Under  
Construction**

**Population  
& Development  
Capacity**

### Projection Assumptions

Several projection models are developed by applying different persistency ratios to building blocks

**5-Year  
Average**

**3-Year  
Average**

**3-Year  
Weighted**

**Blended**





# Projections Primer

- Based on Cohort Survival Methodology – Standard method accepted by the OSCG&R for school construction projects
- The cohort survival methodology **relies on observed data from the recent past in order to project the near future**
- Persistency Ratios calculated from historic enrollment data to determine growth or loss in a class as it progresses through the school system
- Persistency Ratio of 1.0 means cohort size remains the same; 1.05 means the cohort size increases by 5%, or a cohort of 100 grows to 105 the following year
- Persistency Ratios account for the various external factors affecting enrollments: housing characteristics, residential development, economic conditions, student transfers in and out of system, and student mobility
- Changes in population, housing stock and tenure, and economic conditions help explain persistency ratios
- Changes in programming affect persistency ratios of individual schools
- Recent impacts due to the pandemic adds variability to student migration, enrollment trends, housing market conditions, residential mobility and overall economic conditions and labor market.



# Projections Assumptions

These projections are predicated on the following assumptions:

- Pre-K enrollment will average 171 students over the next decade
- Housing multipliers for developments of “scale” not captured in baseline projections have been applied to all projection models. The recent pace of new residential construction will continue
- Housing, student generation, and future birth assumptions at the districtwide level will prove accurate
- Variable Birth-K (BK) assumptions used in each model due to fluctuating births in recent years and increased percentage of kindergartners not born in town.
- **High projections:** Assume high birth projections (average 589 annually) and avg. student in-migration of 0.95%, which is above the 10-yr historic average of 0.6%.
- **Medium projections:** Assume medium birth projections (average 572 annually) and avg. student in-migration of 0.6%, which is on par with historic average
- **Low projections:** Assume low birth projections (average 536 annually) and avg. student in-migration of 0.25%, which is below the recent historic levels



# Persistence Ratios

Kindergarten through 12th Grade Persistence Ratios by School Year 2002-2003 to 2021-22														
Year	Birth-K	K-1	1-2	2-3	3-4	4-5	5-6	6-7	7-8	8-9	9-10	10-11	11-12	Est. of Migration
2002-03	0.9789	1.0367	1.0127	1.0056	1.0030	1.0000	1.0123	0.9958	1.0000	0.9213	0.9715	0.9728	1.0109	0.42%
2003-04	0.9950	1.0388	1.0105	0.9972	0.9834	0.9760	0.9871	1.0046	0.9789	0.9485	0.9984	0.9780	0.9795	-0.87%
2004-05	1.0481	1.0013	1.0097	1.0013	0.9734	1.0154	1.0108	1.0174	1.0015	0.9497	0.9885	0.9836	1.0150	0.41%
2005-06	0.9558	1.0577	0.9899	0.9822	0.9948	0.9899	1.0097	1.0061	1.0043	0.9849	0.9652	0.9750	0.9799	-0.35%
2006-07	1.0593	1.0062	0.9839	1.0281	1.0209	1.0013	1.0174	0.9945	1.0000	0.9986	0.9508	1.0047	0.9778	0.64%
2007-08	1.0839	1.0328	1.0037	1.0366	1.0409	1.0233	1.0078	1.0114	1.0152	0.9985	0.9957	0.9919	0.9922	2.01%
2008-09	1.0370	1.0204	0.9929	1.0087	0.9951	1.0072	1.0094	1.0065	1.0282	0.9620	0.9803	0.9772	1.0163	0.63%
2009-10	1.1334	1.0166	1.0027	1.0119	1.0123	1.0024	1.0118	1.0146	1.0128	0.9822	0.9746	0.9969	1.0190	0.98%
2010-11	1.1017	1.0263	1.0125	1.0093	0.9941	1.0048	1.0049	0.9883	1.0026	0.9861	0.9832	0.9957	1.0233	0.21%
2011-12	1.1747	1.0208	0.9919	1.0025	1.0039	1.0035	1.0157	0.9951	1.0166	0.9727	0.9576	0.9986	1.0087	0.44%
2012-13	1.1197	1.0513	0.9860	1.0095	1.0123	1.0092	1.0141	1.0166	1.0085	0.9709	0.9906	1.0214	1.0242	0.82%
2013-14	1.2090	1.0293	1.0202	1.0052	1.0094	1.0049	1.0130	0.9873	1.0093	0.8936	0.9436	0.9932	0.9974	0.69%
2014-15	1.1726	1.0387	1.0114	1.0140	1.0064	1.0093	0.9806	1.0128	0.9988	0.9225	1.0014	1.0089	0.9959	0.45%
2015-16	1.2602	1.0102	1.0107	1.0267	1.0034	0.9885	1.0119	1.0087	1.0063	0.9201	0.9662	0.9919	0.9761	0.77%
2016-17	1.2693	1.0416	1.0130	1.0211	1.0068	1.0149	1.0168	1.0078	0.9877	0.9258	0.9949	1.0104	1.0313	0.96%
2017-18	1.3312	1.0515	1.0311	1.0242	0.9948	1.0109	1.0079	0.9886	1.0208	0.9466	0.9796	0.9949	1.0308	1.05%
2018-19	1.2341	1.0206	1.0208	0.9971	1.0056	1.0169	0.9798	1.0000	1.0039	0.9644	0.9895	1.0305	1.0181	0.32%
2019-20	1.1489	1.0338	1.0093	1.0073	1.0000	1.0069	1.0230	1.0069	0.9821	0.9577	0.9671	0.9920	1.0148	0.45%
2020-21	1.1673	1.0139	0.9627	0.9862	0.9885	1.0115	1.0165	1.0087	1.0082	0.9521	0.9813	0.9986	1.0254	-0.16%
2021-22	1.2921	1.0675	1.0061	1.0517	1.0062	0.9898	0.9972	0.9676	0.9951	0.9283	0.9820	0.9891	1.0191	0.06%

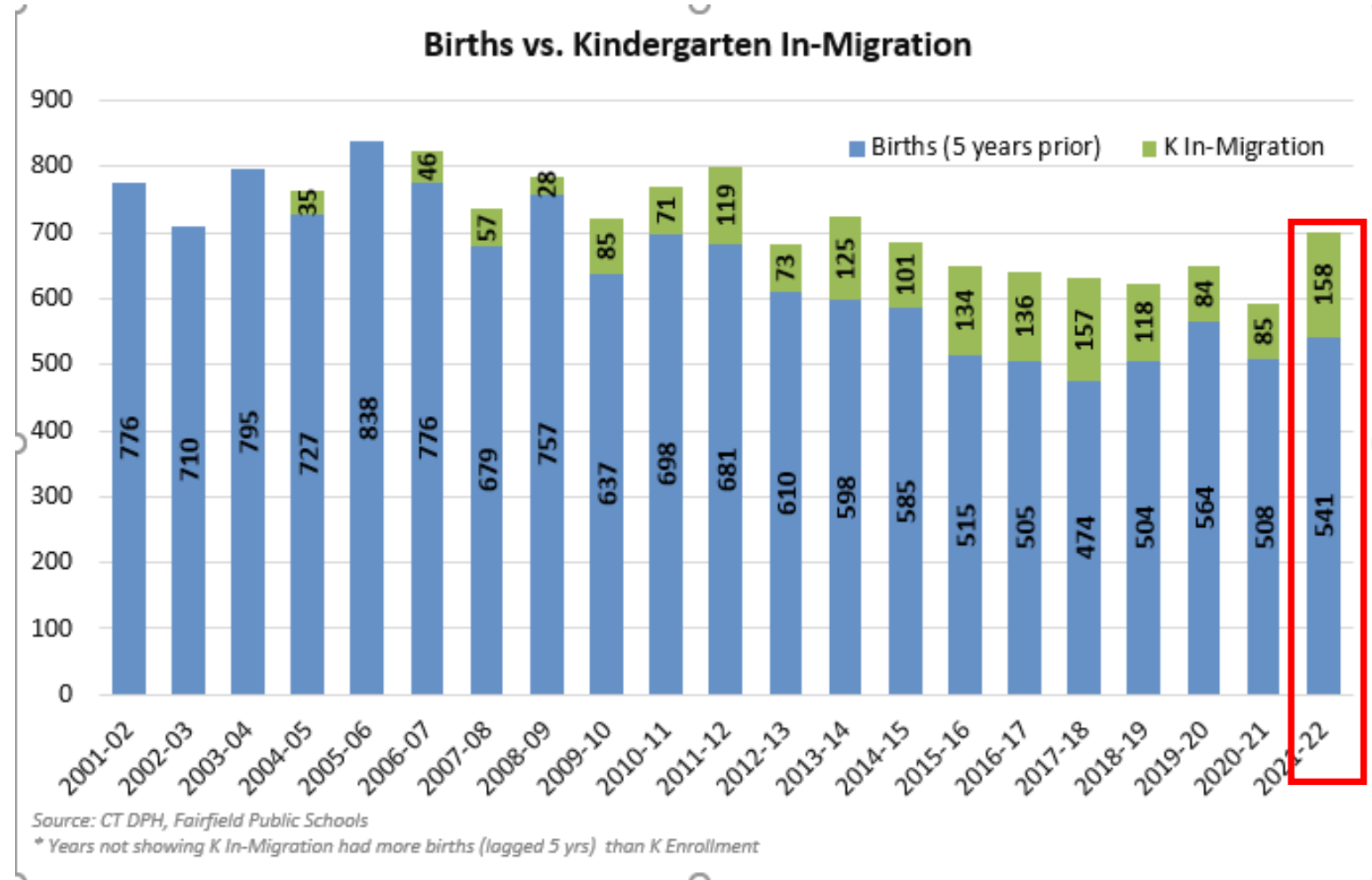
- This year's Birth to K was 1.29, a rebound from the last two years and similar to the average from 2015-2018
- For the last two years, FPS net in-migration was much less than the 10-year average





# Birth-K Analysis

- For 2021-22, it is estimated that ~23% of the K cohort were not born in Fairfield
- Over the last 5-years, it's estimated that 19% of the K cohort has been comprised of children not born in Fairfield. This is a notable increase when compared to the average from 2002-08, when only 3% of the K cohort was not born in Fairfield
- Additionally, Birth-K ratio has risen from ~1.0 in early 2000's to 1.23 from 2017-2021

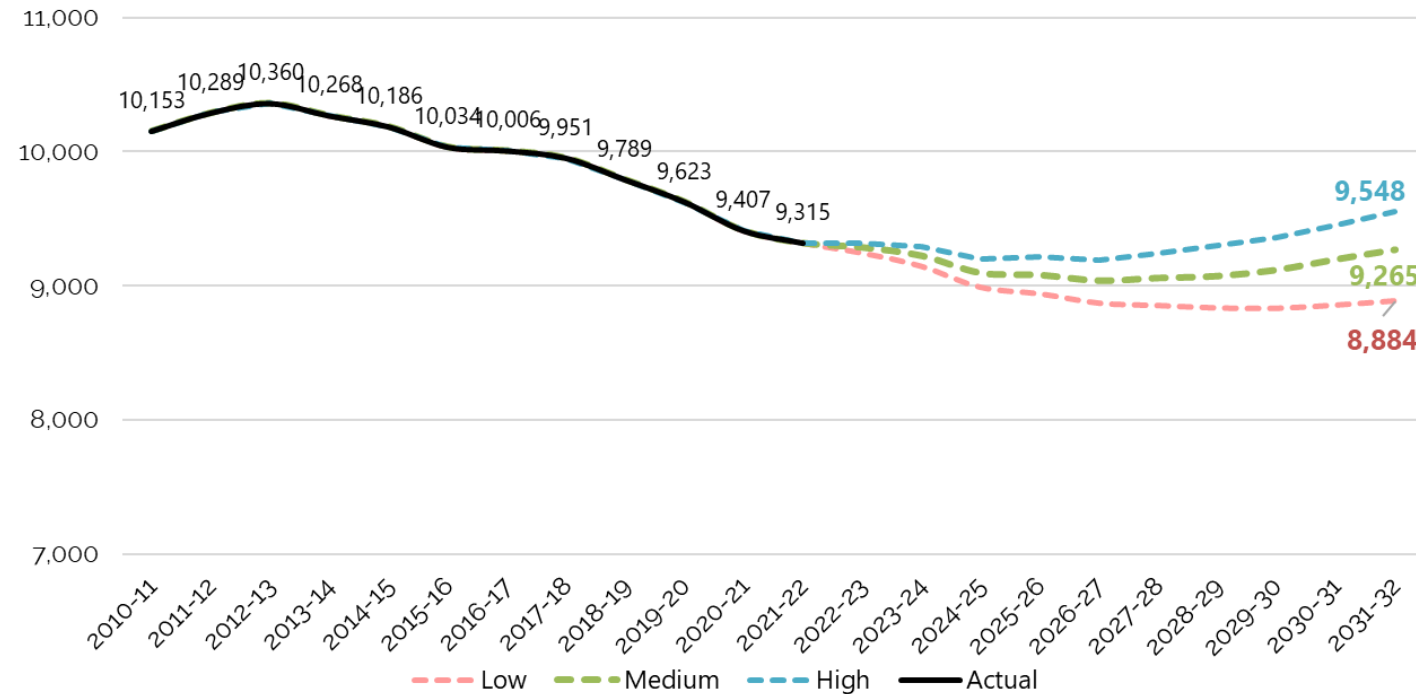




# Districtwide Projections

- With uncertainty surrounding the longer-term impacts of the pandemic, it is important to keep in mind the range of enrollment projections models
- Both High and Medium Models are in agreement, showing enrollment stability then slow growth, whereas the low model is projecting a decline till mid-point, then flat enrollment.
- Overall projected enrollment ranges from 8,884 to 9,548 PK-12 students by 2031-32
- **Recent housing conditions, demographics and enrollment in-migration align best with Medium Model and represents the most likely direction**
- Under the medium model, PK-12<sup>th</sup> enrollment is projected to decline slowly and “bottom out” in 2026-27 at 9,034 students, then recover to 9,265 students by 2031-32

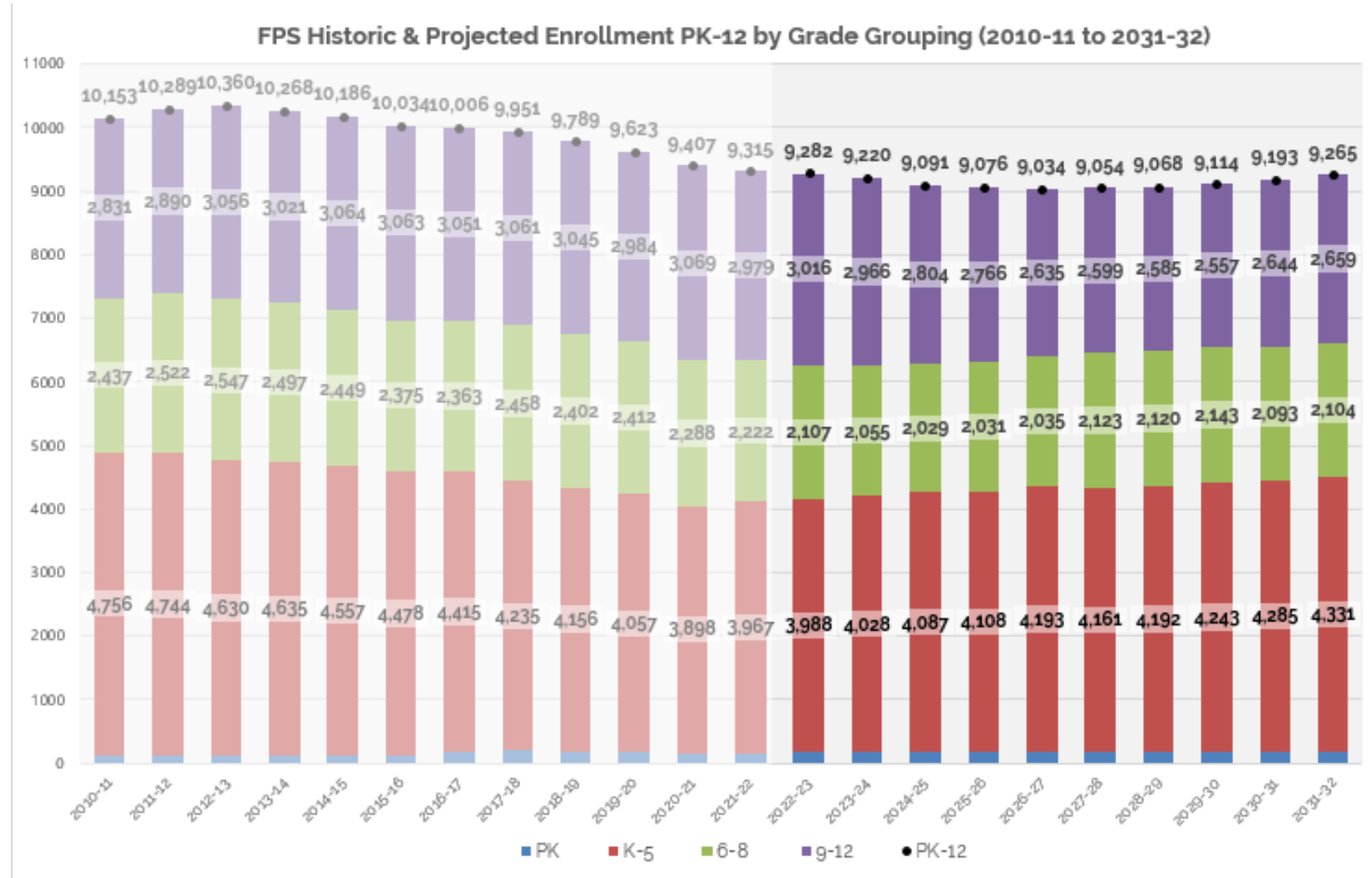
**Fairfield Public Schools Actual and Projected PK-12 Enrollment:  
2010-11 to 2031-32**





# Districtwide Projections (Medium Model)

- K-5 enrollment has “bottomed-out” and is projected to grow by 226 students (5.7%) over the next 5-yrs and ~9.2 % over the next decade
- 6<sup>th</sup>-8<sup>th</sup> enrollment is projected to decline and trough in 2024-25 at 2,029 students, then recover slowly to 2,104 students by 2031-32
- 9<sup>th</sup>-12<sup>th</sup> enrollment is projected to continue to decline until reaching bottom in 2029-30 at 2,557 students. An overall decline of 320 students is projected over the next decade as smaller cohorts matriculate into HS and replace the larger graduating cohorts





# Districtwide Projections (Medium Model)

## MEDIUM MODEL

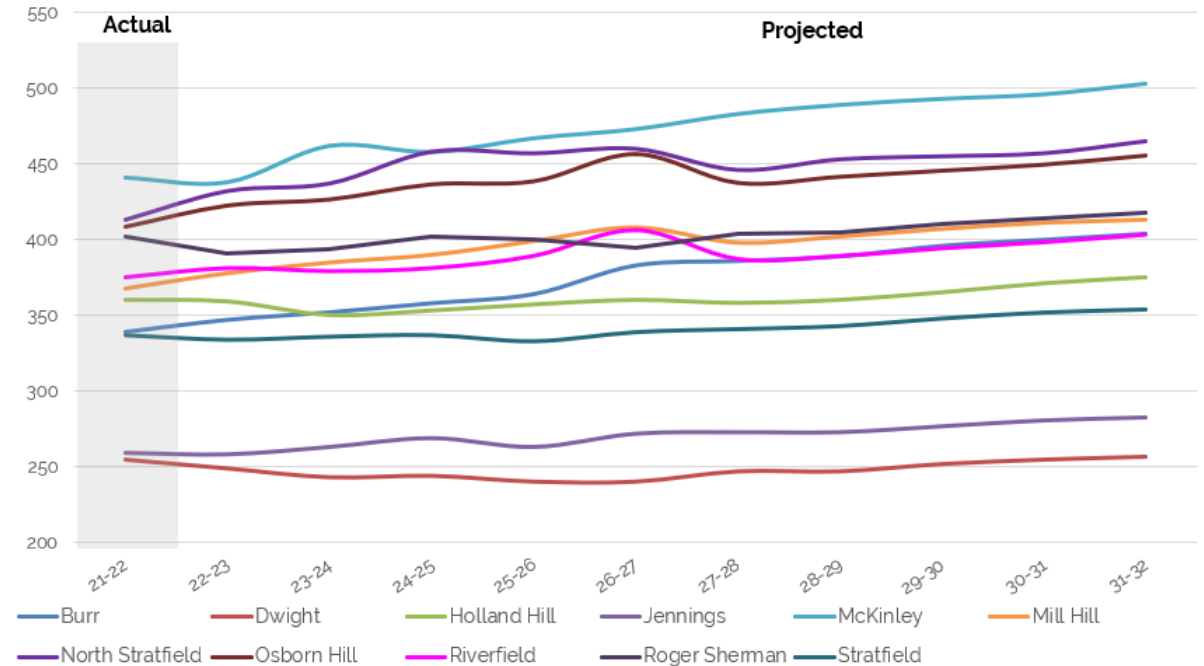
Year	Births	K	1	2	3	4	5	6	7	8	9	10	11	12	PK	K-5	6-8	9-12	K-12	PK-12
2021-22	541	699	633	661	651	645	678	701	716	805	686	820	726	747	147	3,967	2,222	2,979	9,168	9,315
2022-23	482	636	729	641	674	654	654	690	701	716	769	676	825	746	171	3,988	2,107	3,016	9,111	9,282
2023-24	482	640	662	736	652	676	662	665	689	701	683	757	680	846	171	4,028	2,055	2,966	9,049	9,220
2024-25	522	661	667	670	749	655	685	674	665	690	670	673	762	699	171	4,087	2,029	2,804	8,920	9,091
2025-26	493	655	687	673	681	750	662	695	672	664	656	657	674	779	171	4,108	2,031	2,766	8,905	9,076
2026-27	574	696	681	693	684	682	757	672	692	671	633	647	662	693	171	4,193	2,035	2,635	8,863	9,034
2027-28	544	678	722	686	703	684	688	766	667	690	642	625	652	680	171	4,161	2,123	2,599	8,883	9,054
2028-29	545	678	702	726	695	702	689	695	760	665	661	631	627	666	171	4,192	2,120	2,585	8,897	9,068
2029-30	583	699	702	706	735	694	707	696	690	757	638	648	632	639	171	4,243	2,143	2,557	8,943	9,114
2030-31	597	707	724	706	715	734	699	714	691	688	725	626	649	644	171	4,285	2,093	2,644	9,022	9,193
2031-32	589	702	733	728	715	714	739	706	709	689	659	711	627	662	171	4,331	2,104	2,659	9,094	9,265



# Elementary School Projections (Medium)

- Over the next five-years, growth is projected across all elementary schools except Dwight (-5.9%) Holland Hill (0%), & Roger Sherman (-1.7%).
  - Burr, Mill Hill, Osborn Hill & North Stratfield are projected to increase by greater 10%
  - Jennings, McKinley, Riverfield, & Stratfield are projected to grow by less than 10%
- Over the last 5-years of projection horizon, growth is projected across all schools at varying levels

Fairfield Elementary Schools Projected K-5 Enrollment



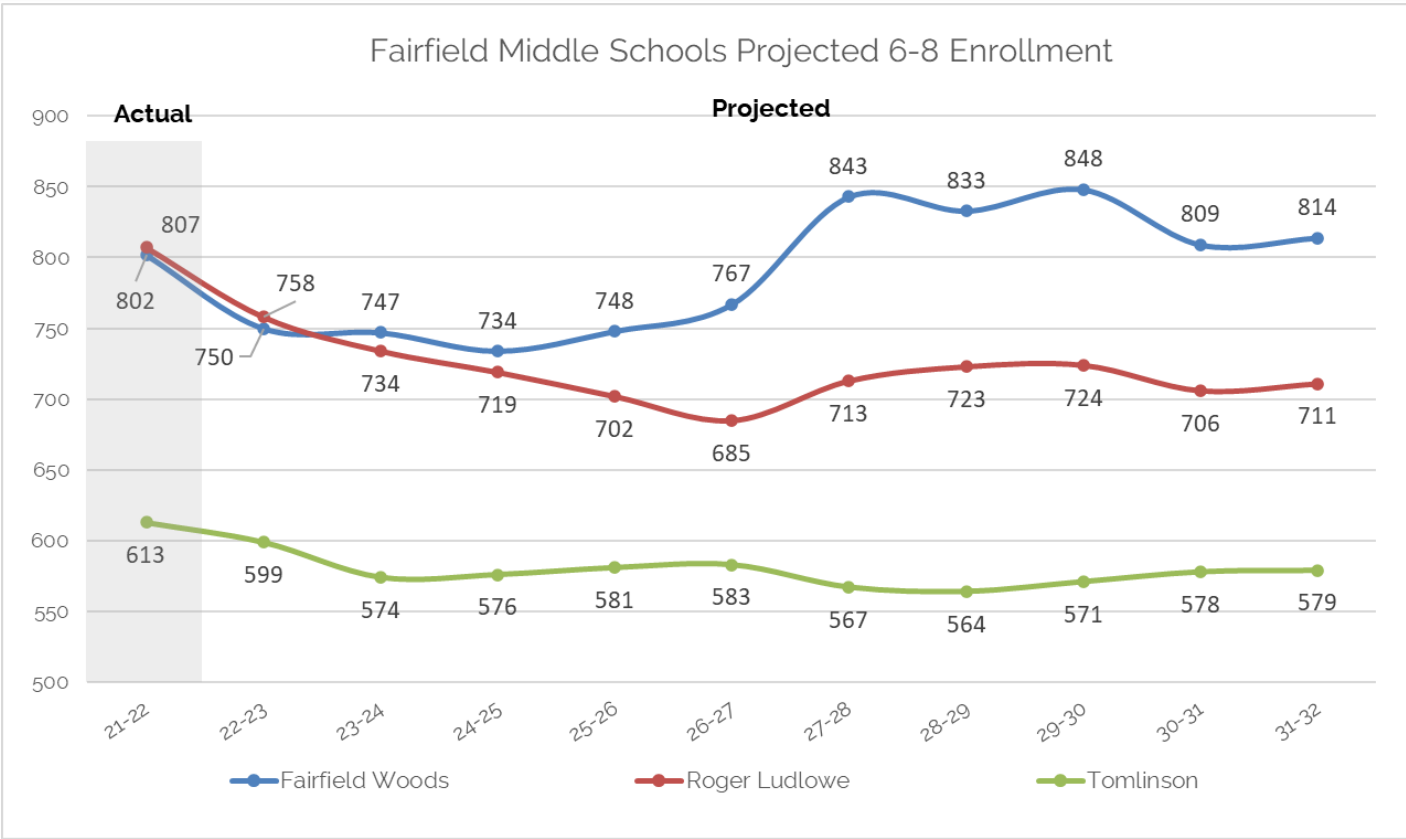
Elementary Projections by School (Medium)

ES School	21-22	22-23	23-24	24-25	25-26	26-27	27-28	28-29	29-30	30-31	31-32	5-year Δ	10-year
Burr	339	345	352	358	364	383	386	389	396	400	404	13.0%	19.2%
Dwight	255	249	243	244	240	240	247	247	252	255	257	-5.9%	0.8%
Holland Hill	360	359	350	353	357	360	358	360	365	371	375	0.0%	4.2%
Jennings	259	258	263	269	263	272	273	273	277	281	283	5.0%	9.3%
McKinley	441	438	462	458	467	473	483	489	493	496	503	7.3%	14.1%
Mill Hill	368	378	385	390	399	408	398	402	407	411	413	10.9%	12.2%
North Stratfield	413	432	437	458	457	460	446	453	455	457	465	11.4%	12.6%
Osborn Hill	409	423	427	437	439	457	438	442	446	450	456	11.7%	11.5%
Riverfield	375	381	379	381	389	406	387	389	394	398	403	8.3%	7.5%
Roger Sherman	402	391	394	402	400	395	404	405	410	414	418	-1.7%	4.0%
Stratfield	337	334	336	337	333	339	341	343	348	352	354	0.6%	5.0%



# Middle School Projections (Medium)

- Tomlinson is projected to dip below 600 students and remain stable, averaging 577 students over the next decade
- Fairfield Woods is projected to be fairly stable for the first 5-years, averaging 749 students. In 2027-28, a bubble, largely attributed to this year's K bubbles in North Stratfield and Osborn Hill finally matriculate into MS and push enrollment to over 840 students
- Roger Ludlowe is projected to decline the first 5-years and bottom out at 685 students. Enrollment then recovers and then averages 715 students in the last half of the projection horizon



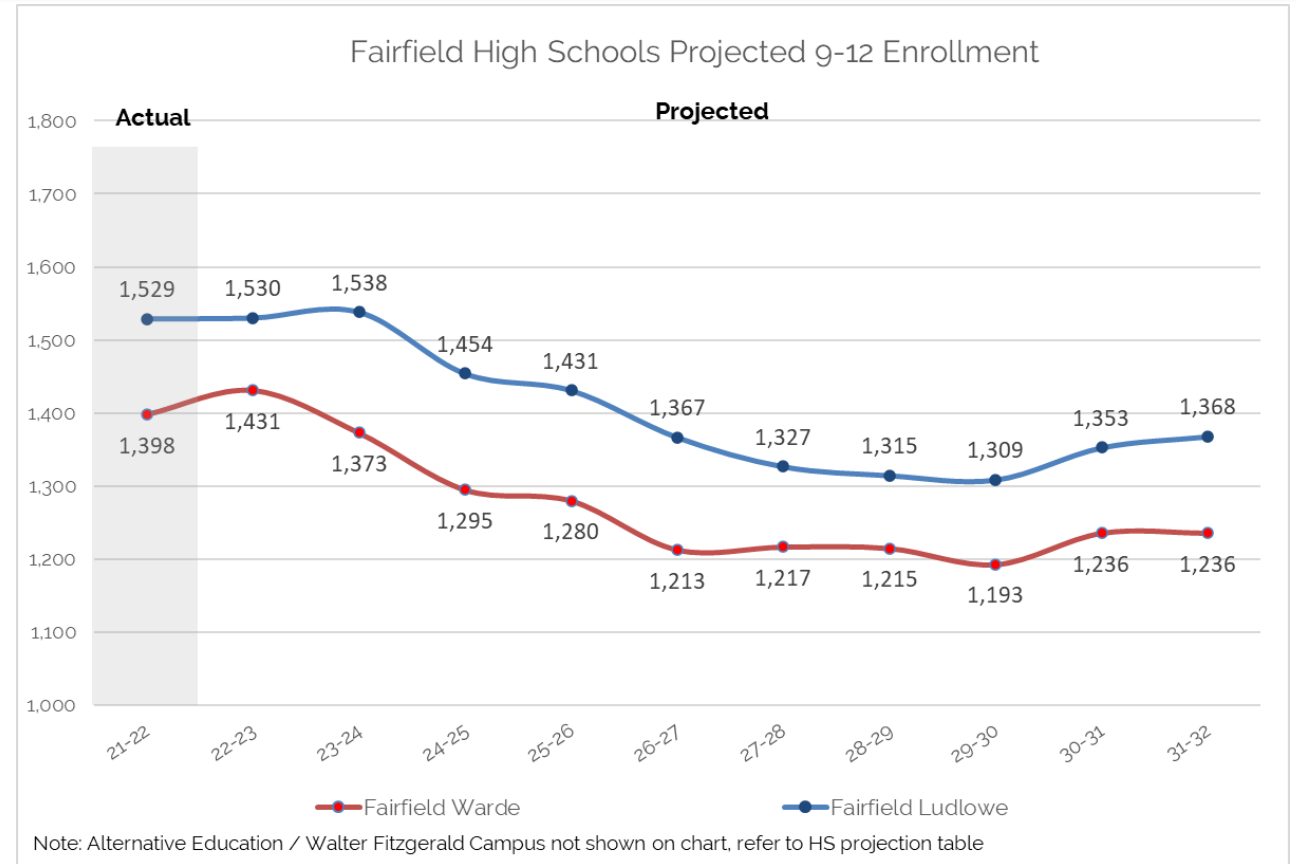
Middle Projections by School (Medium)													
MS School	21-22	22-23	23-24	24-25	25-26	26-27	27-28	28-29	29-30	30-31	31-32	5-year Δ	10-year Δ
Fairfield Woods	802	750	747	734	748	767	843	833	848	809	814	-4.4%	1.5%
Roger Ludlowe	807	758	734	719	702	685	713	723	724	706	711	-15.1%	-11.9%
Tomlinson	613	599	574	576	581	583	567	564	571	578	579	-4.9%	-5.5%





# High School Projections (Medium)

- Fairfield Ward is projected to exceed 1,430 students next year then decline to 1,213 students by 2026-27 and average 1,219 students over the last 5- yrs
- Fairfield Ludlowe is projected to reach nearly 1,540 students by 2023-24 then decline over the next 6- yrs reaching 1,309 students in 2029-30.
- Both high schools are projected to have modest enrollment growth over the last 2- yrs of the projection horizon with Warde at 1,236 and Ludlowe at 1,368 students in 2031-32



High Projections by School (Medium)

HS School	21-22	22-23	23-24	24-25	25-26	26-27	27-28	28-29	29-30	30-31	31-32	5-year Δ	10-year Δ
Fairfield Warde	1,398	1,431	1,373	1,295	1,280	1,213	1,217	1,215	1,193	1,236	1,236	-13.2%	-11.6%
Fairfield Ludlowe	1,529	1,530	1,538	1,454	1,431	1,367	1,327	1,315	1,309	1,353	1,368	-10.6%	-10.5%
Alternative HS	55	55	55	55	55	55	55	55	55	55	55	0.0%	0.0%



# Projection Takeaways

- All three models yield similar trajectories for the first 3-years with a tight band of projected enrollment ranging from 8,884 – 9,548 PK-12 students
- Both the Medium and High Models project similar 10-year trajectories with a spread of less than 300 PK-12 students (9,265 vs. 9,548) by 2031-32
- Based on SLAM's analysis, the **Medium Projection Model reflects the most likely trajectory for future enrollment**
- Elementary school enrollment (K-5) is projected to have the greatest growth over the next decade at 364 students or 9.2%.
- Middle school and high school enrollment are both projected to decline at 118 and 320 students, respectively, over the next decade.
- Medium Projection Model reflects the most likely trajectory for future enrollment. However, recent changes to enrollment drivers from the pandemic bear watching. Should housing market activity continue for next several years at the current levels and in-migration increases, the High Projection Model may prove more accurate in the long-term





# 10- Year Enrollment Projections (Update)

## Appendix A

### Districtwide Low, Medium & High Projections



# Appendix: Districtwide Projections Low

## LOW MODEL

Year	Births	K	1	2	3	4	5	6	7	8	9	10	11	12	PK	K-5	6-8	9-12	K-12	PK-12
2021-22	541	699	633	661	651	645	678	701	716	805	686	820	726	747	147	3,967	2,222	2,979	9,168	9,315
2022-23	482	628	726	638	671	652	651	687	699	714	766	674	822	743	171	3,966	2,100	3,005	9,071	9,242
2023-24	482	631	652	730	647	671	657	659	684	696	679	751	675	840	171	3,988	2,039	2,945	8,972	9,143
2024-25	522	655	656	657	741	648	677	666	657	683	663	668	753	691	171	4,034	2,006	2,775	8,815	8,986
2025-26	493	645	678	659	665	740	652	684	662	654	647	648	666	766	171	4,039	2,000	2,727	8,766	8,937
2026-27	574	685	668	681	667	664	744	659	679	659	622	636	650	682	171	4,109	1,997	2,590	8,696	8,867
2027-28	530	659	708	670	688	665	667	750	652	675	629	612	638	665	171	4,057	2,077	2,544	8,678	8,849
2028-29	533	661	680	709	676	685	667	671	742	648	645	616	611	649	171	4,078	2,061	2,521	8,660	8,831
2029-30	536	662	682	681	715	673	687	671	664	737	619	631	614	621	171	4,100	2,072	2,485	8,657	8,828
2030-31	539	664	683	683	687	712	675	691	664	660	704	605	629	624	171	4,104	2,015	2,562	8,681	8,852
2031-32	542	673	685	684	689	684	714	679	684	660	631	688	603	639	171	4,129	2,023	2,561	8,713	8,884



# Appendix: Districtwide Projections Medium

## MEDIUM MODEL

Year	Births	K	1	2	3	4	5	6	7	8	9	10	11	12	PK	K-5	6-8	9-12	K-12	PK-12
2021-22	541	699	633	661	651	645	678	701	716	805	686	820	726	747	147	3,967	2,222	2,979	9,168	9,315
2022-23	482	636	729	641	674	654	654	690	701	716	769	676	825	746	171	3,988	2,107	3,016	9,111	9,282
2023-24	482	640	662	736	652	676	662	665	689	701	683	757	680	846	171	4,028	2,055	2,966	9,049	9,220
2024-25	522	661	667	670	749	655	685	674	665	690	670	673	762	699	171	4,087	2,029	2,804	8,920	9,091
2025-26	493	655	687	673	681	750	662	695	672	664	656	657	674	779	171	4,108	2,031	2,766	8,905	9,076
2026-27	574	696	681	693	684	682	757	672	692	671	633	647	662	693	171	4,193	2,035	2,635	8,863	9,034
2027-28	544	678	722	686	703	684	688	766	667	690	642	625	652	680	171	4,161	2,123	2,599	8,883	9,054
2028-29	545	678	702	726	695	702	689	695	760	665	661	631	627	666	171	4,192	2,120	2,585	8,897	9,068
2029-30	583	699	702	706	735	694	707	696	690	757	638	648	632	639	171	4,243	2,143	2,557	8,943	9,114
2030-31	597	707	724	706	715	734	699	714	691	688	725	626	649	644	171	4,285	2,093	2,644	9,022	9,193
2031-32	589	702	733	728	715	714	739	706	709	689	659	711	627	662	171	4,331	2,104	2,659	9,094	9,265



# Appendix: Districtwide Projections High

## HIGH MODEL

Year	Births	K	1	2	3	4	5	6	7	8	9	10	11	12	PK	K-5	6-8	9-12	K-12	PK-12
2021-22	541	699	633	661	651	645	678	701	716	805	686	820	726	747	147	3,967	2,222	2,979	9,168	9,315
2022-23	482	641	732	643	676	657	656	693	704	719	772	679	828	749	171	4,005	2,116	3,028	9,149	9,320
2023-24	482	644	670	742	657	681	667	669	695	706	689	763	685	852	171	4,061	2,070	2,989	9,120	9,291
2024-25	522	673	674	681	758	663	692	682	672	698	678	682	771	707	171	4,141	2,052	2,838	9,031	9,202
2025-26	493	658	702	683	694	762	672	705	683	673	666	667	685	791	171	4,171	2,061	2,809	9,041	9,212
2026-27	574	696	686	711	696	698	772	685	705	684	645	660	674	707	171	4,259	2,074	2,686	9,019	9,190
2027-28	570	694	725	694	724	699	707	784	683	705	657	639	667	695	171	4,243	2,172	2,658	9,073	9,244
2028-29	579	700	722	732	706	726	707	717	781	683	678	648	643	684	171	4,293	2,181	2,653	9,127	9,298
2029-30	589	702	728	729	744	708	734	717	715	781	657	667	651	658	171	4,345	2,213	2,633	9,191	9,362
2030-31	598	708	730	735	741	746	716	744	715	715	751	647	670	666	171	4,376	2,174	2,734	9,284	9,455
2031-32	608	714	736	737	747	743	754	726	742	715	688	739	650	686	171	4,431	2,183	2,763	9,377	9,548



# 10- Year Enrollment Projections (Update)

## Appendix B

### Individual School Projections by School and Grade (Medium)



# Elementary By School & Grade (Medium)

Fairfield Public Schools Elementary School Enrollment Projections 2022-23							
School	K	1	2	3	4	5	K-5th
Burr	59	64	50	62	60	50	345
Dwight	36	33	44	49	40	47	249
Holland Hill	57	57	57	52	62	74	359
Jennings	43	44	38	51	43	39	258
McKinley	71	72	76	74	85	60	438
Mill Hill	60	75	60	56	66	61	378
North Stratfield	65	82	75	74	63	73	432
Osborn Hill	66	100	60	72	61	64	423
Riverfield	59	83	53	55	62	69	381
Roger Sherman	65	62	76	67	57	64	391
Stratfield	57	56	54	61	54	52	334
<b>TOTAL</b>	<b>638</b>	<b>728</b>	<b>643</b>	<b>673</b>	<b>653</b>	<b>653</b>	<b>3988</b>

Fairfield Public Schools Elementary School Enrollment Projections 2025-26							
School	K	1	2	3	4	5	K-5th
Burr	64	66	62	61	61	50	364
Dwight	37	40	40	43	35	45	240
Holland Hill	58	57	56	54	67	65	357
Jennings	44	44	44	45	47	39	263
McKinley	74	78	77	80	76	82	467
Mill Hill	61	65	63	66	80	64	399
North Stratfield	66	69	72	74	93	83	457
Osborn Hill	68	75	72	73	94	57	439
Riverfield	61	65	65	63	84	51	389
Roger Sherman	65	70	66	66	59	74	400
Stratfield	58	59	57	56	52	51	333
<b>TOTAL</b>	<b>656</b>	<b>688</b>	<b>674</b>	<b>681</b>	<b>748</b>	<b>661</b>	<b>4108</b>

Fairfield Public Schools Elementary School Enrollment Projections 2028-29							
School	K	1	2	3	4	5	K-5th
Burr	66	68	69	65	62	59	389
Dwight	38	41	43	43	41	41	247
Holland Hill	60	57	60	55	65	63	360
Jennings	45	45	46	45	48	44	273
McKinley	77	83	84	81	81	83	489
Mill Hill	63	66	68	69	68	68	402
North Stratfield	70	71	77	75	80	80	453
Osborn Hill	70	77	78	74	72	71	442
Riverfield	62	65	71	65	64	62	389
Roger Sherman	67	71	70	67	65	65	405
Stratfield	59	59	61	56	55	53	343
<b>TOTAL</b>	<b>677</b>	<b>703</b>	<b>727</b>	<b>695</b>	<b>701</b>	<b>689</b>	<b>4192</b>

Fairfield Public Schools Elementary School Enrollment Projections 2031-32							
School	K	1	2	3	4	5	K-5th
Burr	69	71	69	67	64	64	404
Dwight	39	42	43	46	43	44	257
Holland Hill	62	60	60	58	67	68	375
Jennings	47	47	47	47	48	47	283
McKinley	79	85	84	83	83	89	503
Mill Hill	65	69	68	70	69	72	413
North Stratfield	71	74	78	77	79	86	465
Osborn Hill	72	80	78	76	74	76	456
Riverfield	65	68	71	66	65	68	403
Roger Sherman	70	75	70	68	66	69	418
Stratfield	62	62	61	58	55	56	354
<b>TOTAL</b>	<b>701</b>	<b>733</b>	<b>729</b>	<b>716</b>	<b>713</b>	<b>739</b>	<b>4331</b>

Fairfield Public Schools Elementary School Enrollment Projections 2023-24							
School	K	1	2	3	4	5	K-5th
Burr	60	61	61	51	60	59	352
Dwight	36	39	34	47	47	40	243
Holland Hill	57	55	58	56	62	62	350
Jennings	43	43	44	39	53	41	263
McKinley	71	75	73	79	74	90	462
Mill Hill	61	62	76	63	56	67	385
North Stratfield	65	66	87	77	75	67	437
Osborn Hill	66	72	100	59	68	62	427
Riverfield	59	63	87	52	55	63	379
Roger Sherman	65	68	61	76	67	57	394
Stratfield	57	58	55	53	59	54	336
<b>TOTAL</b>	<b>640</b>	<b>662</b>	<b>736</b>	<b>652</b>	<b>676</b>	<b>662</b>	<b>4028</b>

Fairfield Public Schools Elementary School Enrollment Projections 2026-27							
School	K	1	2	3	4	5	K-5th
Burr	69	66	64	63	60	61	383
Dwight	39	40	42	43	41	35	240
Holland Hill	62	56	57	55	64	66	360
Jennings	46	44	45	45	47	45	272
McKinley	78	77	79	78	80	81	473
Mill Hill	65	65	65	67	66	80	408
North Stratfield	70	68	74	74	76	98	460
Osborn Hill	71	73	75	73	69	96	457
Riverfield	65	65	67	63	62	84	406
Roger Sherman	69	69	67	67	64	59	395
Stratfield	62	58	58	56	53	52	339
<b>TOTAL</b>	<b>696</b>	<b>681</b>	<b>693</b>	<b>684</b>	<b>682</b>	<b>757</b>	<b>4193</b>

Fairfield Public Schools Elementary School Enrollment Projections 2029-30							
School	K	1	2	3	4	5	K-5th
Burr	69	68	67	69	62	61	396
Dwight	39	41	43	46	42	41	252
Holland Hill	62	58	58	59	64	64	365
Jennings	46	45	46	47	47	46	277
McKinley	78	82	81	87	80	85	493
Mill Hill	65	66	67	72	68	69	407
North Stratfield	71	71	75	79	77	82	455
Osborn Hill	71	76	75	79	71	74	446
Riverfield	65	65	68	69	63	64	394
Roger Sherman	70	71	68	70	65	66	410
Stratfield	62	59	59	59	54	55	348
<b>TOTAL</b>	<b>698</b>	<b>702</b>	<b>707</b>	<b>736</b>	<b>693</b>	<b>707</b>	<b>4243</b>

Fairfield Public Schools Elementary School Enrollment Projections 2024-25							
School	K	1	2	3	4	5	K-5th
Burr	63	62	60	62	50	61	358
Dwight	37	39	40	36	45	47	244
Holland Hill	59	55	55	57	66	61	353
Jennings	44	44	44	45	41	51	269
McKinley	73	76	76	76	79	78	458
Mill Hill	62	64	63	81	63	57	390
North Stratfield	68	67	72	91	79	81	458
Osborn Hill	67	72	72	101	56	69	437
Riverfield	62	63	65	85	51	55	381
Roger Sherman	67	67	66	61	74	67	402
Stratfield	59	58	57	54	51	58	337
<b>TOTAL</b>	<b>661</b>	<b>667</b>	<b>670</b>	<b>749</b>	<b>655</b>	<b>685</b>	<b>4087</b>

Fairfield Public Schools Elementary School Enrollment Projections 2027-28							
School	K	1	2	3	4	5	K-5th
Burr	66	71	65	65	60	59	386
Dwight	38	42	41	44	41	41	247
Holland Hill	59	60	56	56	64	63	358
Jennings	45	46	44	46	47	45	273
McKinley	77	83	79	81	80	83	483
Mill Hill	63	68	65	69	66	67	398
North Stratfield	70	72	72	76	76	80	446
Osborn Hill	70	77	74	76	70	71	438
Riverfield	62	68	67	66	62	62	387
Roger Sherman	68	73	67	68	64	64	404
Stratfield	59	62	57	57	53	53	341
<b>TOTAL</b>	<b>677</b>	<b>722</b>	<b>687</b>	<b>704</b>	<b>683</b>	<b>688</b>	<b>4161</b>

Fairfield Public Schools Elementary School Enrollment Projections 2030-31							
School	K	1	2	3	4	5	K-5th
Burr	69	71	67	67	65	61	400
Dwight	39	42	42	46	44	42	255
Holland Hill	62	60	59	57	69	64	371
Jennings	47	47	46	47	49	45	281
McKinley	80	83	81	83	86	83	496
Mill Hill	66	68	67	70	71	69	411
North Stratfield	72	73	75	77	81	79	457
Osborn Hill	73	77	76	77	75	72	450
Riverfield	65	68	68	66	68	63	398
Roger Sherman	71	73	68	68	68	66	414
Stratfield	62	62	59	58	57	54	352
<b>TOTAL</b>	<b>706</b>	<b>724</b>	<b>708</b>	<b>716</b>	<b>733</b>	<b>698</b>	<b>4285</b>





# Middle By School & Grade (Medium)

Fairfield Public Schools Middle School Enrollment Projections 2022-23				
School	6	7	8	6-8 Total
Fairfield Woods	244	251	255	750
Roger Ludlowe	242	251	265	758
Tomlinson	204	199	196	599
<b>TOTAL</b>	<b>690</b>	<b>701</b>	<b>716</b>	<b>2,107</b>

Fairfield Public Schools Middle School Enrollment Projections 2025-26				
School	6	7	8	6-8 Total
Fairfield Woods	273	240	235	748
Roger Ludlowe	227	227	248	702
Tomlinson	195	205	181	581
<b>TOTAL</b>	<b>695</b>	<b>672</b>	<b>664</b>	<b>2,031</b>

Fairfield Public Schools Middle School Enrollment Projections 2028-29				
School	6	7	8	6-8 Total
Fairfield Woods	266	314	253	833
Roger Ludlowe	237	256	230	723
Tomlinson	192	190	182	564
<b>TOTAL</b>	<b>695</b>	<b>760</b>	<b>665</b>	<b>2,120</b>

Fairfield Public Schools Middle School Enrollment Projections 2031-32				
School	6	7	8	6-8 Total
Fairfield Woods	272	275	267	814
Roger Ludlowe	241	238	232	711
Tomlinson	193	196	190	579
<b>TOTAL</b>	<b>706</b>	<b>709</b>	<b>689</b>	<b>2,104</b>

Fairfield Public Schools Middle School Enrollment Projections 2023-24				
School	6	7	8	6-8 Total
Fairfield Woods	235	257	255	747
Roger Ludlowe	251	242	241	734
Tomlinson	179	190	205	574
<b>TOTAL</b>	<b>665</b>	<b>689</b>	<b>701</b>	<b>2,055</b>

Fairfield Public Schools Middle School Enrollment Projections 2026-27				
School	6	7	8	6-8 Total
Fairfield Woods	255	271	241	767
Roger Ludlowe	235	225	225	685
Tomlinson	182	196	205	583
<b>TOTAL</b>	<b>672</b>	<b>692</b>	<b>671</b>	<b>2,035</b>

Fairfield Public Schools Middle School Enrollment Projections 2029-30				
School	6	7	8	6-8 Total
Fairfield Woods	270	263	315	848
Roger Ludlowe	236	235	253	724
Tomlinson	190	192	189	571
<b>TOTAL</b>	<b>696</b>	<b>690</b>	<b>757</b>	<b>2,143</b>

Fairfield Public Schools Middle School Enrollment Projections 2024-25				
School	6	7	8	6-8 Total
Fairfield Woods	241	234	259	734
Roger Ludlowe	230	250	239	719
Tomlinson	203	181	192	576
<b>TOTAL</b>	<b>674</b>	<b>665</b>	<b>690</b>	<b>2,029</b>

Fairfield Public Schools Middle School Enrollment Projections 2027-28				
School	6	7	8	6-8 Total
Fairfield Woods	318	253	272	843
Roger Ludlowe	258	232	223	713
Tomlinson	190	182	195	567
<b>TOTAL</b>	<b>766</b>	<b>667</b>	<b>690</b>	<b>2,123</b>

Fairfield Public Schools Middle School Enrollment Projections 2030-31				
School	6	7	8	6-8 Total
Fairfield Woods	278	267	264	809
Roger Ludlowe	240	234	232	706
Tomlinson	196	190	192	578
<b>TOTAL</b>	<b>714</b>	<b>691</b>	<b>688</b>	<b>2,093</b>



# High By School & Grade (Medium)

Fairfield Public Schools High School Enrollment Projections 2022-23					
School	9	10	11	12	9-12 Total
Fairfield Warde	360	311	398	362	1,431
Fairfield Ludlowe	408	360	418	344	1,530
Alternative HS	1	5	9	40	55
<b>TOTAL</b>	<b>769</b>	<b>676</b>	<b>825</b>	<b>746</b>	<b>3,016</b>

Fairfield Public Schools High School Enrollment Projections 2025-26					
School	9	10	11	12	9-12 Total
Fairfield Warde	310	312	309	348	1,279
Fairfield Ludlowe	345	340	356	391	1,432
Alternative HS	1	5	9	40	55
<b>TOTAL</b>	<b>656</b>	<b>657</b>	<b>674</b>	<b>779</b>	<b>2,766</b>

Fairfield Public Schools High School Enrollment Projections 2028-29					
School	9	10	11	12	9-12 Total
Fairfield Warde	321	304	285	305	1,215
Fairfield Ludlowe	339	322	333	321	1,315
Alternative HS	1	5	9	40	55
<b>TOTAL</b>	<b>661</b>	<b>631</b>	<b>627</b>	<b>666</b>	<b>2,585</b>

Fairfield Public Schools High School Enrollment Projections 2031-32					
School	9	10	11	12	9-12 Total
Fairfield Warde	314	324	292	305	1,235
Fairfield Ludlowe	344	382	326	317	1,369
Alternative HS	1	5	9	40	55
<b>TOTAL</b>	<b>659</b>	<b>711</b>	<b>627</b>	<b>662</b>	<b>2,659</b>

Fairfield Public Schools High School Enrollment Projections 2023-24					
School	9	10	11	12	9-12 Total
Fairfield Warde	316	347	317	393	1,373
Fairfield Ludlowe	366	405	354	413	1,538
Alternative HS	1	5	9	40	55
<b>TOTAL</b>	<b>683</b>	<b>757</b>	<b>680</b>	<b>846</b>	<b>2,966</b>

Fairfield Public Schools High School Enrollment Projections 2026-27					
School	9	10	11	12	9-12 Total
Fairfield Warde	290	300	318	305	1,213
Fairfield Ludlowe	342	342	335	348	1,367
Alternative HS	1	5	9	40	55
<b>TOTAL</b>	<b>633</b>	<b>647</b>	<b>662</b>	<b>693</b>	<b>2,635</b>

Fairfield Public Schools High School Enrollment Projections 2029-30					
School	9	10	11	12	9-12 Total
Fairfield Warde	300	308	308	277	1,193
Fairfield Ludlowe	337	335	315	322	1,309
Alternative HS	1	5	9	40	55
<b>TOTAL</b>	<b>638</b>	<b>648</b>	<b>632</b>	<b>639</b>	<b>2,557</b>

Fairfield Public Schools High School Enrollment Projections 2024-25					
School	9	10	11	12	9-12 Total
Fairfield Warde	324	305	354	311	1,294
Fairfield Ludlowe	345	363	399	348	1,455
Alternative HS	1	5	9	40	55
<b>TOTAL</b>	<b>670</b>	<b>673</b>	<b>762</b>	<b>699</b>	<b>2,804</b>

Fairfield Public Schools High School Enrollment Projections 2027-28					
School	9	10	11	12	9-12 Total
Fairfield Warde	315	281	308	313	1,217
Fairfield Ludlowe	326	339	335	327	1,327
Alternative HS	1	5	9	40	55
<b>TOTAL</b>	<b>642</b>	<b>625</b>	<b>652</b>	<b>680</b>	<b>2,599</b>

Fairfield Public Schools High School Enrollment Projections 2030-31					
School	9	10	11	12	9-12 Total
Fairfield Warde	336	288	313	300	1,237
Fairfield Ludlowe	388	333	327	304	1,352
Alternative HS	1	5	9	40	55
<b>TOTAL</b>	<b>725</b>	<b>626</b>	<b>649</b>	<b>644</b>	<b>2,644</b>